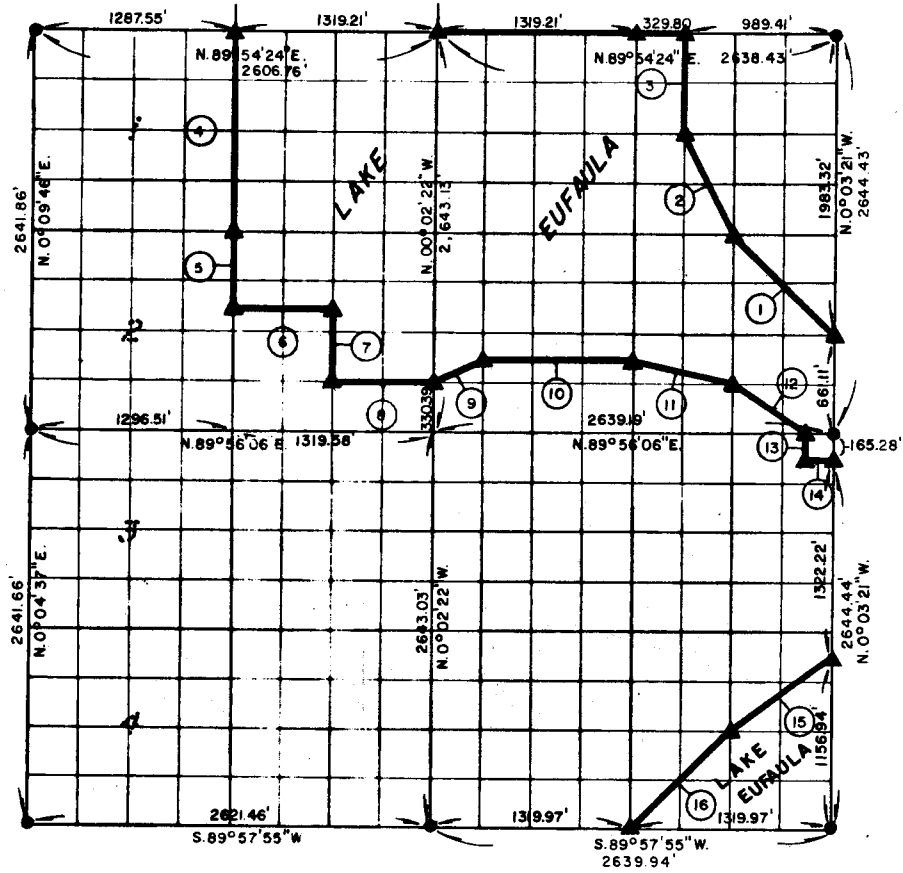


PARTIAL BOUNDARY SURVEYS
EUFULA LAKE
OKLAHOMA

Performed Under Contract Number DACW 56-77-C-0257

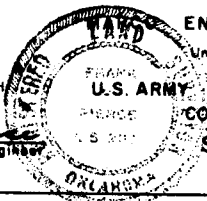
SEC. 19, T. 9N., R. 15E., COUNTY McINTOSH



Course No.	Distance	Bearing	Course No.	Distance	Bearing
1.	933.77'	N. 45° 00' 22\" W	14.	164.95'	N. 89° 56' 13\" E.
2.	738.56'	N. 28° 34' 35\" W.	15.	825.36'	S. 53° 02' 03\" W.
3.	660.98'	N. 0° 02' 59\" W.	16.	933.96'	S. 44° 54' 43\" W.
4.	1321.24'	S. 0° 01' 53\" E.			
5.	495.46'	S. 0° 01' 53\" E.			
6.	659.73'	N. 89° 55' 34\" E.			
7.	495.52'	S. 0° 02' 08\" E.			
8.	659.77'	N. 89° 55' 53\" E.			
9.	369.01'	N. 63° 20' 08\" E.			
10.	989.64'	N. 89° 55' 47\" E.			
11.	680.09'	S. 76° 00' 26\" E.			
12.	595.01'	S. 56° 19' 19\" E.			
13.	165.27'	S. 0° 03' 17\" E.			

CERTIFICATE OF SURVEY
I hereby certify that the above plat is a true and correct representation of the survey made in Section 19, T. 9N., R. 15E., McIntosh County, Oklahoma.

Frank P. Paine
Registered Professional Engineer
Registered Land Surveyor



ENGINEERING CORPORATION
Under the Supervision of
U.S. ARMY ENGINEER DISTRICT, TULSA
CORPS OF ENGINEERS
SHEET 1 of 2

LEGEND
▲ MONUMENT
○ ORIGINAL
○ IRON

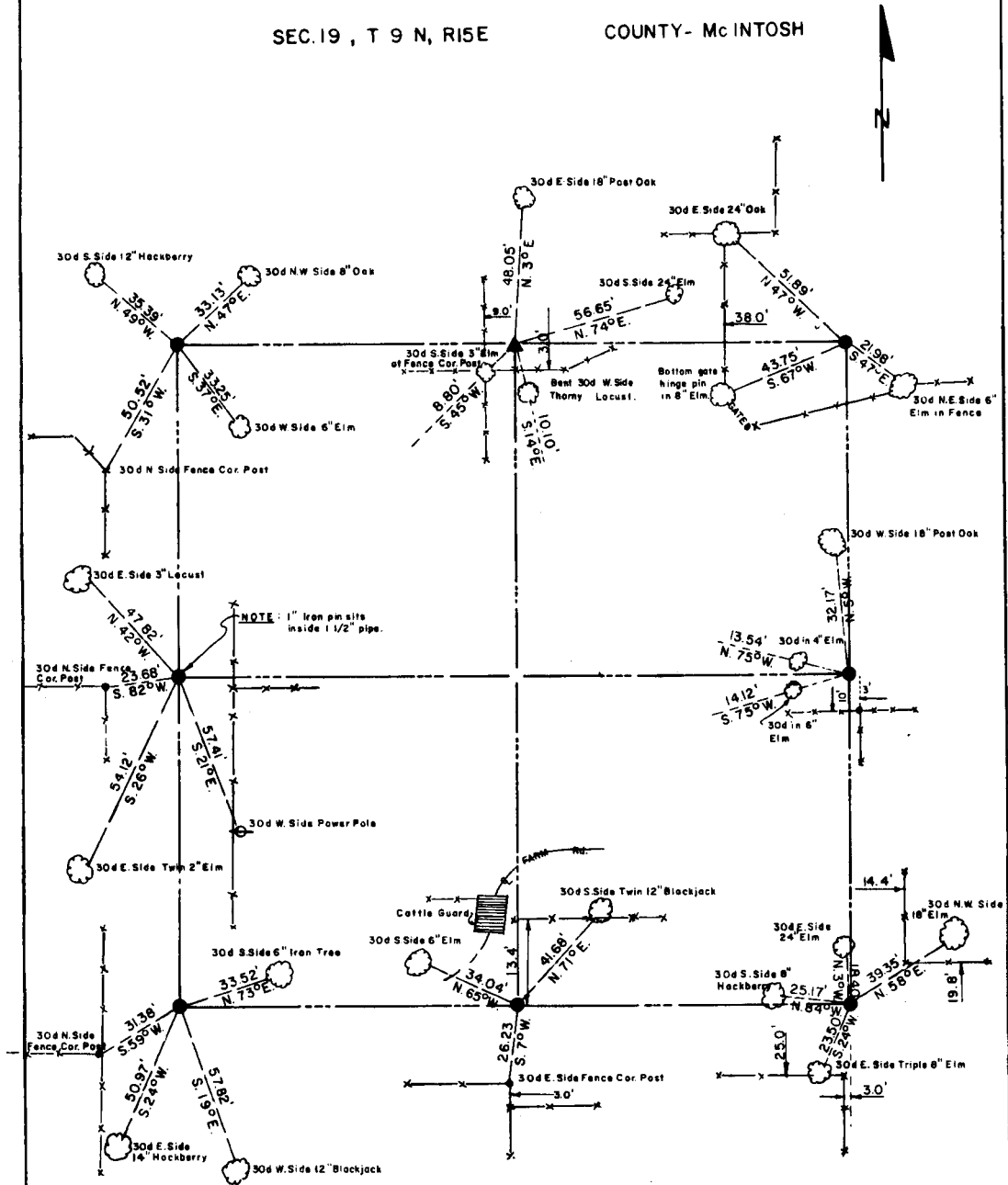
303

EUFAULA LAKE OKLAHOMA

SECTION AND QUARTER SECTION CORNER
REFERENCES FOR

SEC. 19, T 9 N, R 15 E

COUNTY - McINTOSH



Scale: 1" = 50'
Date: April, 1978
Field book No. E-1365

LEGEND

- △ - Monument
- - Original Corner
- - Iron pin (1")

303