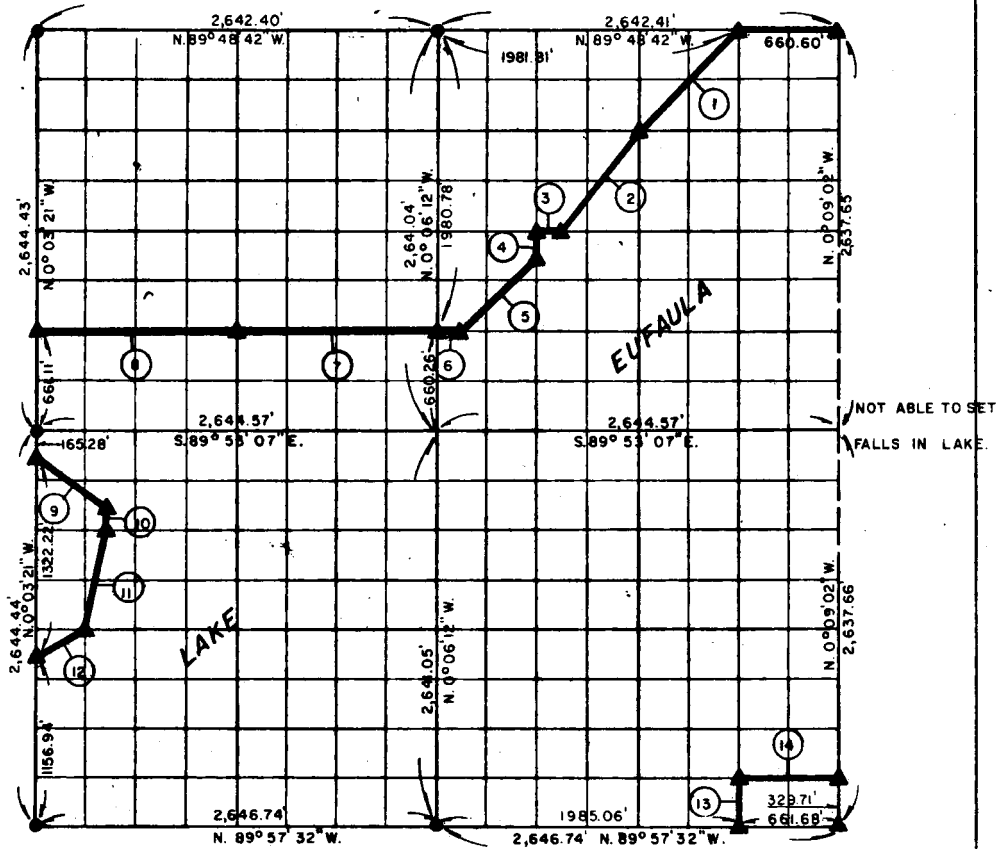


**PARTIAL BOUNDARY SURVEYS
EUFAULA LAKE
OKLAHOMA**

Performed Under Contract Number DACW 56-77-C-0257

SEC. 20, T. 9 N., R. 15 E., COUNTY McINTOSH



Course No.	Distance	Bearing	Course No.	Distance	Bearing
1.	931.12'	S. 45° 03' 51" W.	14.	661.62'	S. 89° 56' 59" E.
2.	823.33'	S. 36° 53' 11" W.			
3.	165.22'	N. 89° 50' 55" W.			
4.	165.01'	S. 0° 06' 55" E.			
5.	699.08'	S. 45° 03' 03" W.			
6.	165.25'	N. 89° 52' 01" W.			
7.	1322.01'	N. 89° 52' 01" W.			
8.	1322.02'	N. 89° 52' 01" W.			
9.	596.75'	S. 56° 15' 46" E.			
10.	165.24'	S. 0° 03' 53" E.			
11.	680.92'	S. 13° 59' 21" W.			
12.	369.37'	S. 63° 29' 47" W.			
13.	329.81'	N. 0° 08' 20" W.			

Field Book No. E-1366 Date April, 1978

CERTIFICATE OF SURVEY

I hereby Certify That The Above Plat is a True and Correct Representation of The Survey Made in Section 20, T. 9 N., R. 15 E., McINTOSH COUNTY, OKLAHOMA

Frank P. Pierce
Registered Professional
Registered Land Surveyor

MAPCO ENGINEERING CORPORATION

Under The Supervision Of

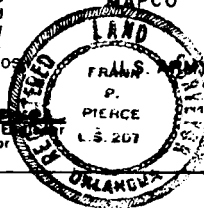
FRANK P. PIERCE ENGINEER DISTRICT, TULSA

MEMBER AMERICAN SOCIETY OF PROFESSIONAL ENGINEERS

SHEET 1 of 2

LEGEND

- ▲ MONUMENT
- ORIGINAL CORNER
- IRON PIN



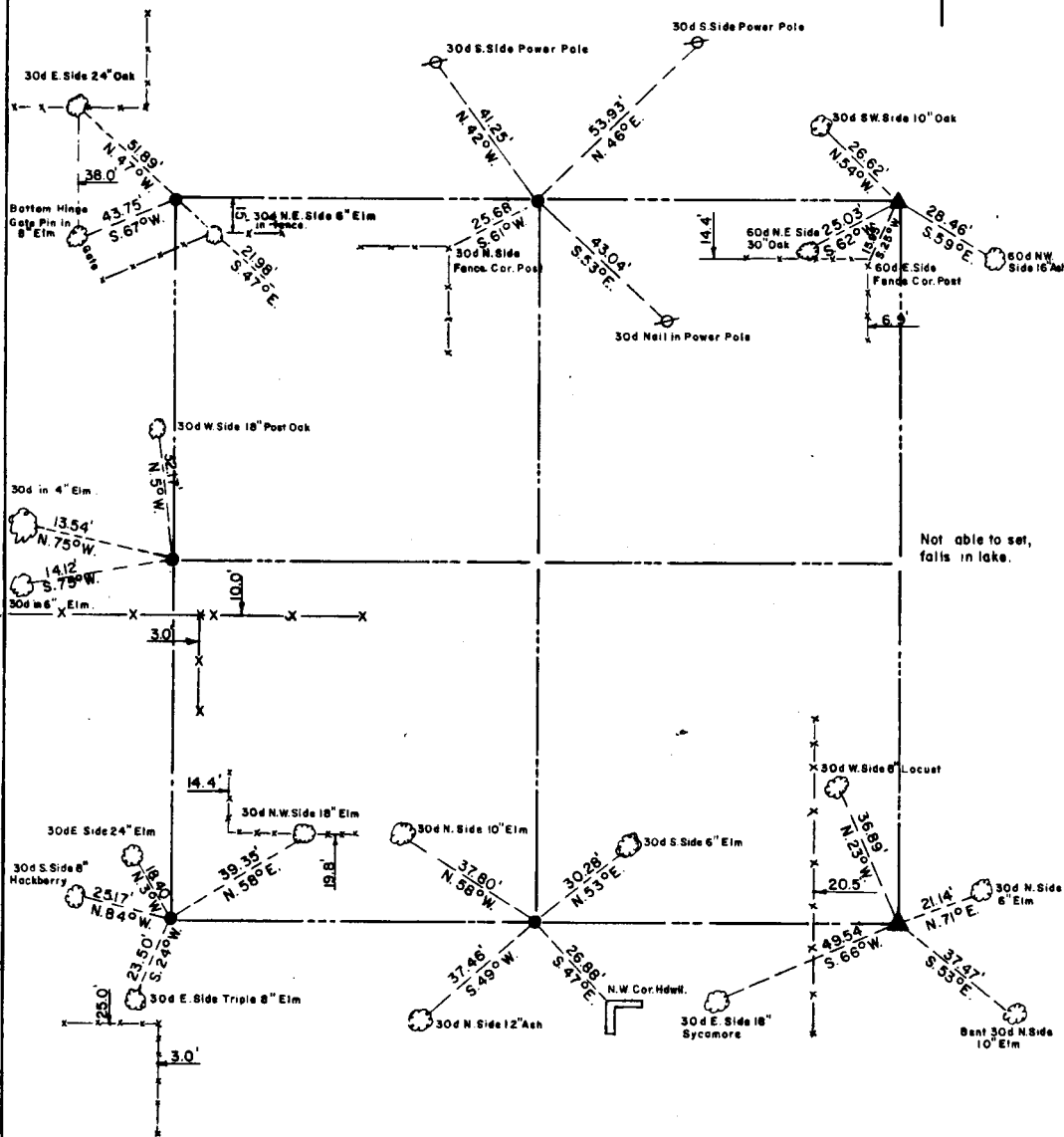
304

EUFAULA LAKE OKLAHOMA

SECTION AND QUARTER SECTION CORNER
REFERENCES FOR

SEC. 20, T 9 N, R 15 E

COUNTY- McINTOSH



Scale: 1" = 50'
Date: April, 1978
Field book No. E-1366

LEGEND

- △ - Monument
- - Original Corner
- - Iron pin (1")