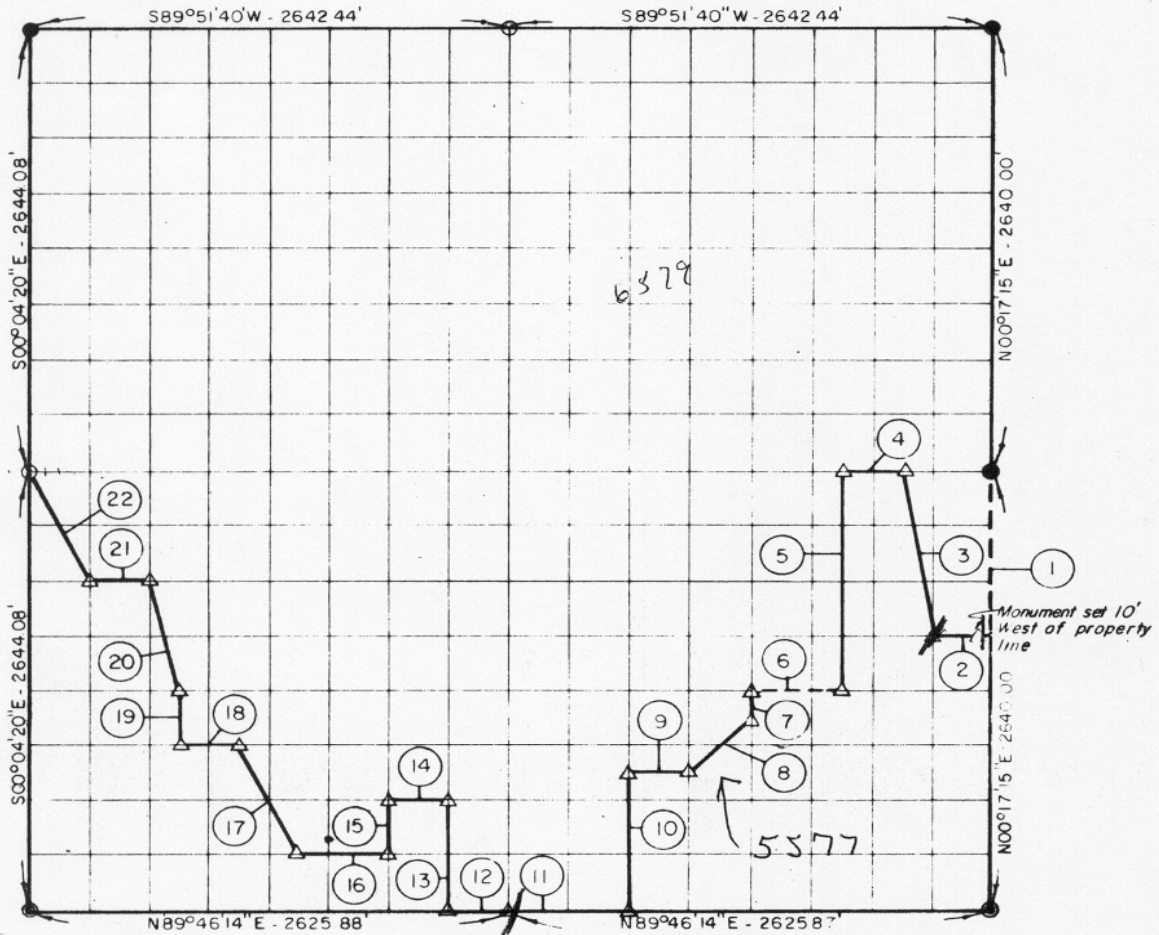


PARTIAL BOUNDARY SURVEYS
 EUFAULA RESERVOIR
 CANADIAN RIVER, OKLAHOMA

Performed Under Contract Number DACW 56-70-C-0151

SEC. 23 T-9-N R-15-E COUNTY McINTOSH



Course No	Distance	Bearing	Course No	Distance	Bearing
1	990.00'	S00°17'15\"W	13	660.57'	N00°01'11\"W
2	327.94'	S89°17'56\"W	14	329.72'	S89°46'55\"W
3	1002.41'	N09°11'00\"W	15	330.32'	S00°01'38\"E
4	328.56'	S89°48'58\"W	16	494.43'	S89°46'34\"W
5	1320.38'	S00°11'37\"W	17	737.54'	N26°35'44\"W
6	491.58'	S89°47'30\"W	18	329.74'	S89°47'15\"W
7	165.06'	S00°08'16\"W	19	330.43'	N00°03'13\"W
8	466.36'	S44°43'35\"W	20	680.92'	N14°04'13\"W
9	327.40'	S89°47'05\"W	21	329.87'	S89°48'17\"W
10	325.48'	S00°03'46\"W	22	738.04'	N26°37'14\"W
11	653.72'	S89°46'14\"W			
12	329.61'	S89°46'14\"W			

- LEGEND
 ▲ MONUMENT SET
 ▲ MONUMENT FD
 ○ 5/8\" IRON PIN SET
 ● IRON PINS FD
 ⊙ SEC COR UNDER WATER

TOPOGRAPHIC ENGINEERING CO
 Under the Supervision of *Revised: 12/8/70*
 DEPARTMENT OF THE ARMY
 TULSA DISTRICT CORPS OF ENGINEERS

Field Book No
 E - 1129
 Date 9/9/70
 Sheet 1 of 1

SURVEYOR'S CERTIFICATION:

I, Arnold R Irwin, Oklahoma registered land surveyor number 334, do hereby certify that this plat represents the results of an on the ground survey made in Section 23, T9N, R15E under my supervision and is true and correct to the best of my knowledge.

Arnold R Irwin
 Arnold R Irwin, Okla R L S 334

307