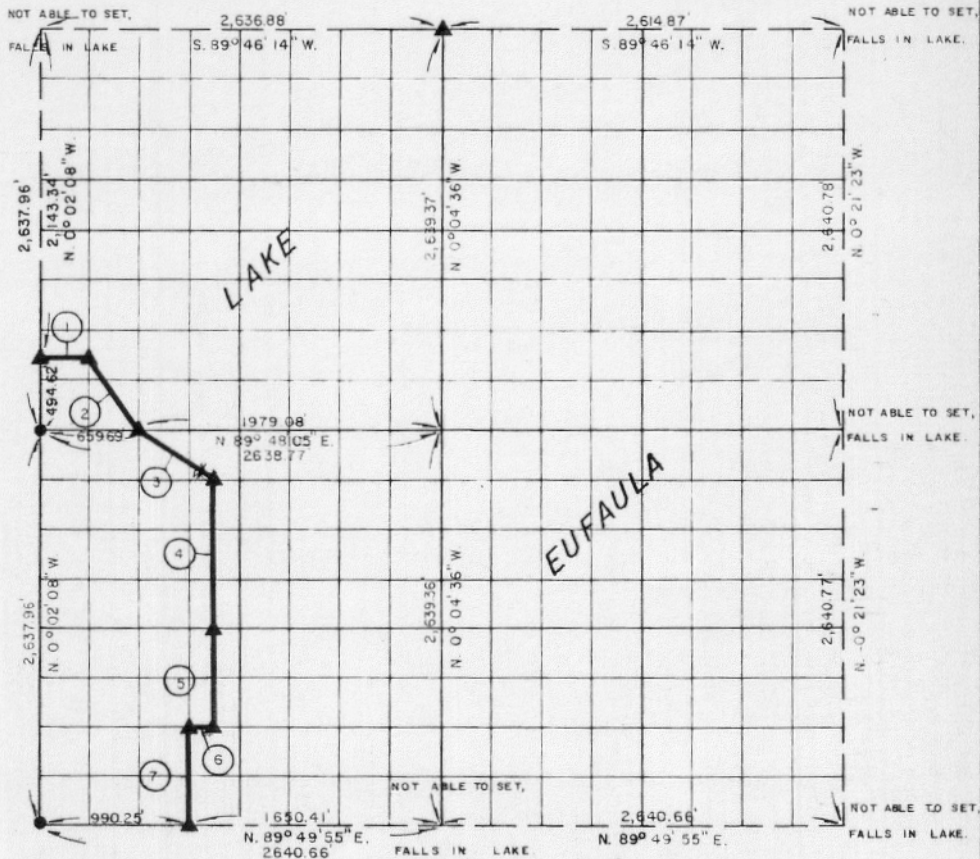


PARTIAL BOUNDARY SURVEYS
EUFULA LAKE
OKLAHOMA

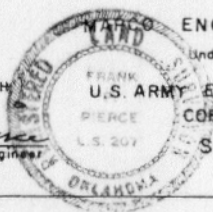
Performed Under Contract Number DACW 56-77-C-0257

SEC. 26, T. 9 N., R. 15 E., COUNTY McINTOSH



Course No.	Distance	Bearing	Course No.	Distance	Bearing
1.	329.80'	N. 89° 47' 44" E.			
2.	593.78'	S. 33° 47' 09" E.			
3.	593.93'	S. 56° 27' 57" E.			
4.	989.46'	S. 0° 03' 13" E.			
5.	659.64'	S. 0° 03' 13" E.			
6.	165.01'	S. 89° 49' 28" W.			
7.	659.62'	S. 0° 03' 04" E.			

CERTIFICATE OF SURVEY
I Hereby Certify That The
Above Plot is a True and
Correct Representation of
The Survey Made in Section
26 T. 9 N., R. 15 E., McINTOSH
COUNTY, OKLAHOMA
Frank P. Pierce
Registered Professional Engineer
Registered Land Surveyor



Field Book No. E-1367 Date April, 1978
ENGINEERING CORPORATION
Under The Supervision Of
FRANK PIERCE
U.S. ARMY ENGINEER DISTRICT, TULSA
CORPS OF ENGINEERS
SHEET 1 of 2

LEGEND
▲ MONUMENT
□ ORIGINAL CORNER
○ IRON PIN

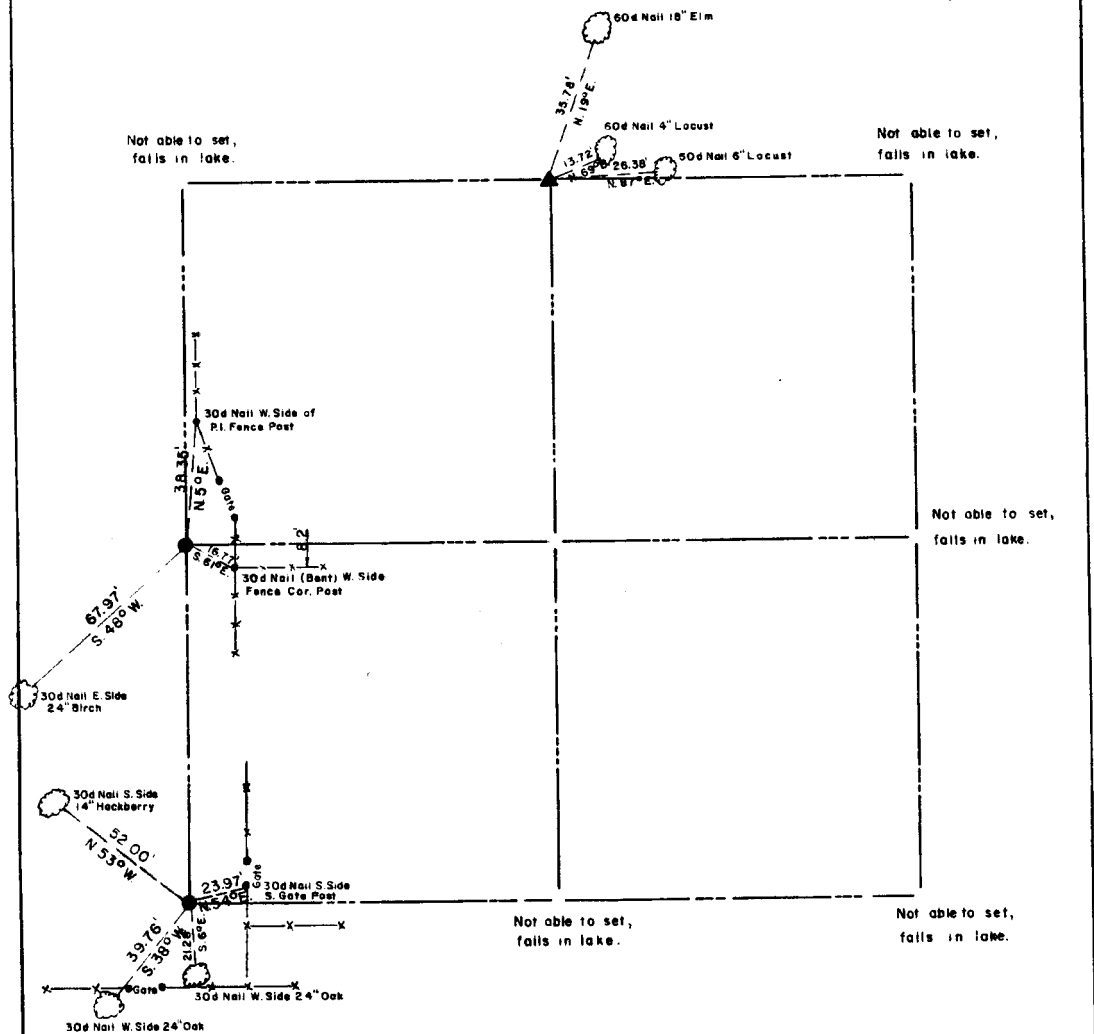
324

EUFAULA LAKE OKLAHOMA

SECTION AND QUARTER SECTION CORNER
REFERENCES FOR

SEC. 26, T 9 N, R15E

COUNTY- Mc INTOSH



Not able to set,
falls in lake.

Not able to set,
falls in lake.

Not able to set,
falls in lake.

Not able to set,
falls in lake.

Not able to set,
falls in lake.

Scale: 1" = 50'
Date: April, 1978
Field book No. E-1367

LEGEND

- Δ - Monument
- - Original Corner
- - Iron pin (1")