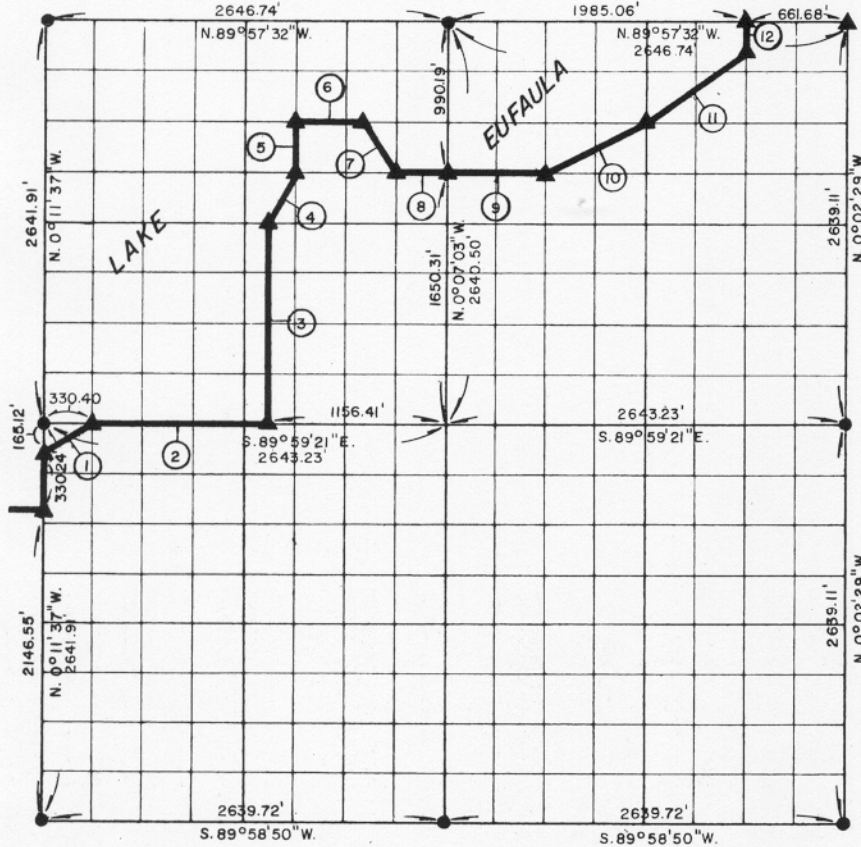


**PARTIAL BOUNDARY SURVEYS  
EUFAULA LAKE  
OKLAHOMA**

Performed Under Contract Number DACW 56-77-C-0257

SEC. 29, T. 9 N., R. 15 E., COUNTY Mc INTOSH



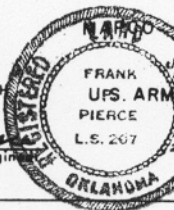
Course No.	Distance	Bearing	Course No.	Distance	Bearing
1.	368.84'	N. 63° 24' 58\" E.			
2.	1156.41'	S. 89° 59' 21\" E.			
3.	1320.56'	N. 0° 09' 03\" W.			
4.	368.76'	N. 26° 29' 15\" E.			
5.	330.13'	N. 0° 08' 46\" W.			
6.	496.10'	S. 89° 57' 59\" E.			
7.	369.60'	S. 26° 42' 17\" E.			
8.	330.68'	S. 89° 58' 13\" E.			
9.	661.36'	S. 89° 58' 13\" E.			
10.	738.54'	N. 63° 29' 30\" E.			
11.	825.46'	N. 53° 11' 48\" E.			
12.	164.97'	N. 0° 03' 38\" W.			

Field Book No. E-1369 Date April, 1978

**CERTIFICATE OF SURVEY**

I hereby certify that the above plat is a true and correct representation of the survey made in Section 29 T9 N, R15 E, McINTOSH COUNTY, OKLAHOMA

*Frank P. Pierce*  
Registered Professional Engineer  
Registered Land Surveyor



**ENGINEERING CORPORATION**  
Under the Supervision Of  
**FRANK PIERCE**  
U.S. ARMY ENGINEER DISTRICT, TULSA  
CORPS OF ENGINEERS  
L.S. 267

SHEET 1 of 2

**LEGEND**

- ▲ MONUMENT
- ORIGINAL CORNER
- IRON PIN

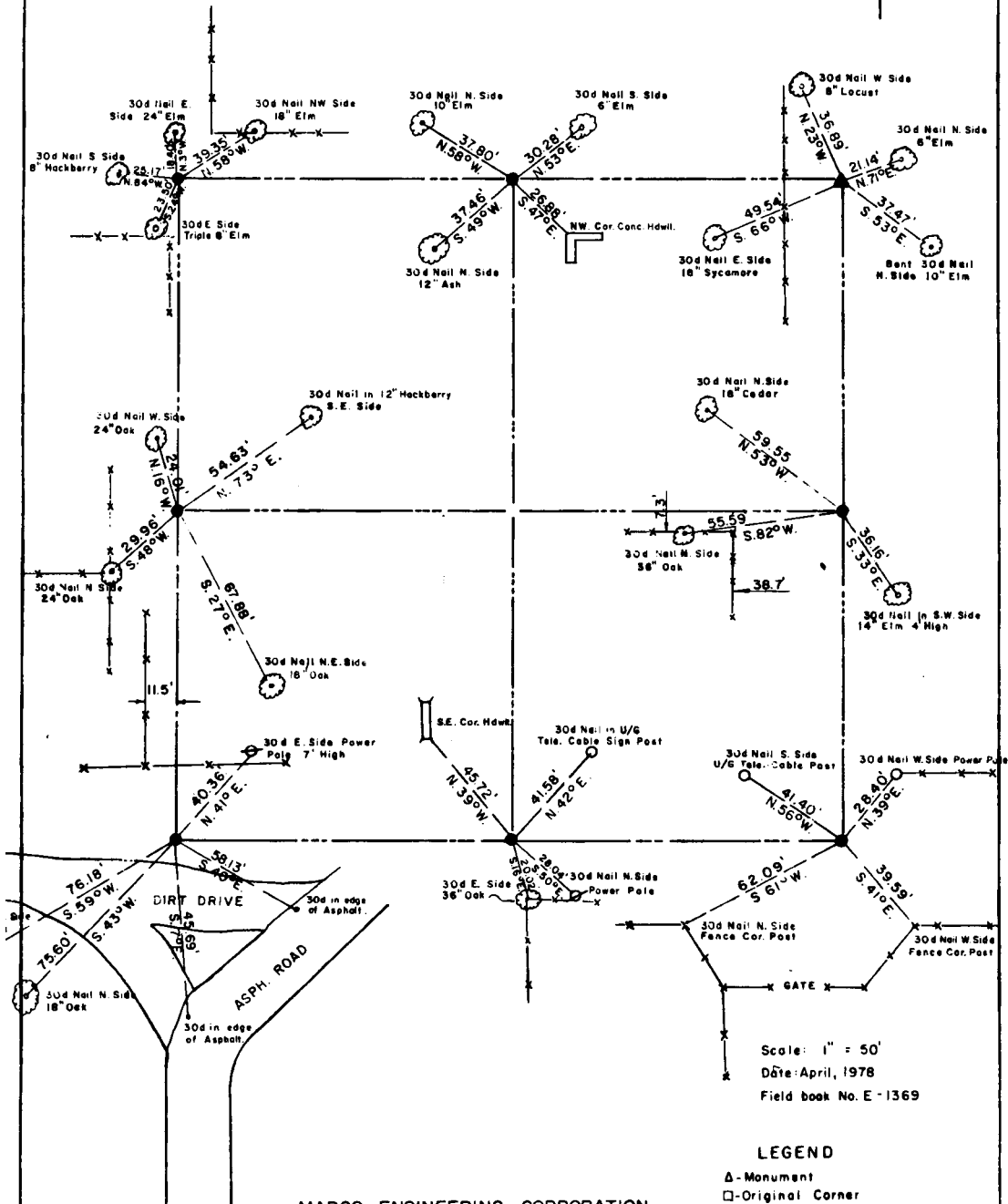
321

# EUFAULA LAKE OKLAHOMA

SECTION AND QUARTER SECTION CORNER  
REFERENCES FOR

SEC. 29, T 9 N, R 15 E

COUNTY - McINTOSH



MAPCO ENGINEERING CORPORATION  
SHEET 2 of 2