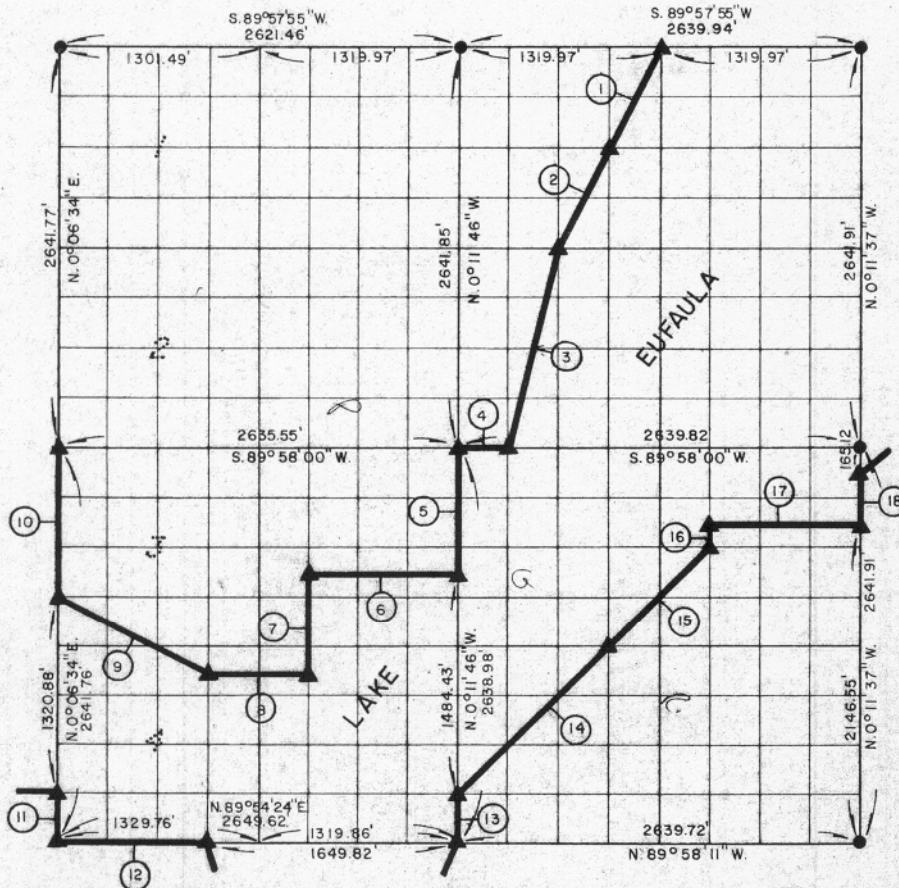


PARTIAL BOUNDARY SURVEYS  
EUFULA LAKE  
OKLAHOMA

Performed Under Contract Number DACW 56-77-C-0257

SEC. 30, T. 9 N., R. 15 E., COUNTY McINTOSH



Course No.	Distance	Bearing	Course No.	Distance	Bearing
1.	737.49'	S. 26° 23' 06" W.	14.	1397.36'	N. 44° 54' 08" E.
2.	737.49'	S. 26° 23' 06" W.	15.	931.91'	N. 44° 54' 08" E.
3.	1360.62'	S. 13° 50' 23" W.	16.	165.05'	N. 0° 11' 40" W.
4.	329.98'	S. 89° 58' 00" W.	17.	989.92'	N. 89° 58' 43" E.
5.	824.68'	S. 0° 11' 46" E.	18.	330.24'	N. 0° 11' 37" W.
6.	989.92'	S. 89° 56' 53" W.			
7.	660.00'	S. 0° 11' 49" E.			
8.	659.94'	S. 89° 55' 59" W.			
9.	1108.86'	N. 63° 32' 06" W.			
10.	990.66'	N. 0° 06' 34" E.			
11.	330.22'	S. 0° 06' 34" W.			
12.	999.80'	N. 89° 54' 24" E.			
13.	329.87'	N. 0° 11' 46" W.			

Field Book No. E-1370 Date April, 1978

CERTIFICATE OF SURVEY

I hereby certify that the Above Plat is a True and Correct Representation of the Survey Made in Section 30 T. 9 N. R. 15 E., McINTOSH COUNTY, OKLAHOMA

Frank P. [Signature]  
Registered Professional Engineer  
Registered Land Surveyor



LMAPCO ENGINEERING CORPORATION  
Under the Supervision of  
FRANK P. PIERCE  
P.U.S. ARMY ENGINEER DISTRICT, TULSA  
CORPS OF ENGINEERS  
SHEET 1 of 2

LEGEND

- ▲ MONUMENT
- ORIGINAL CORNER
- IRON PIN

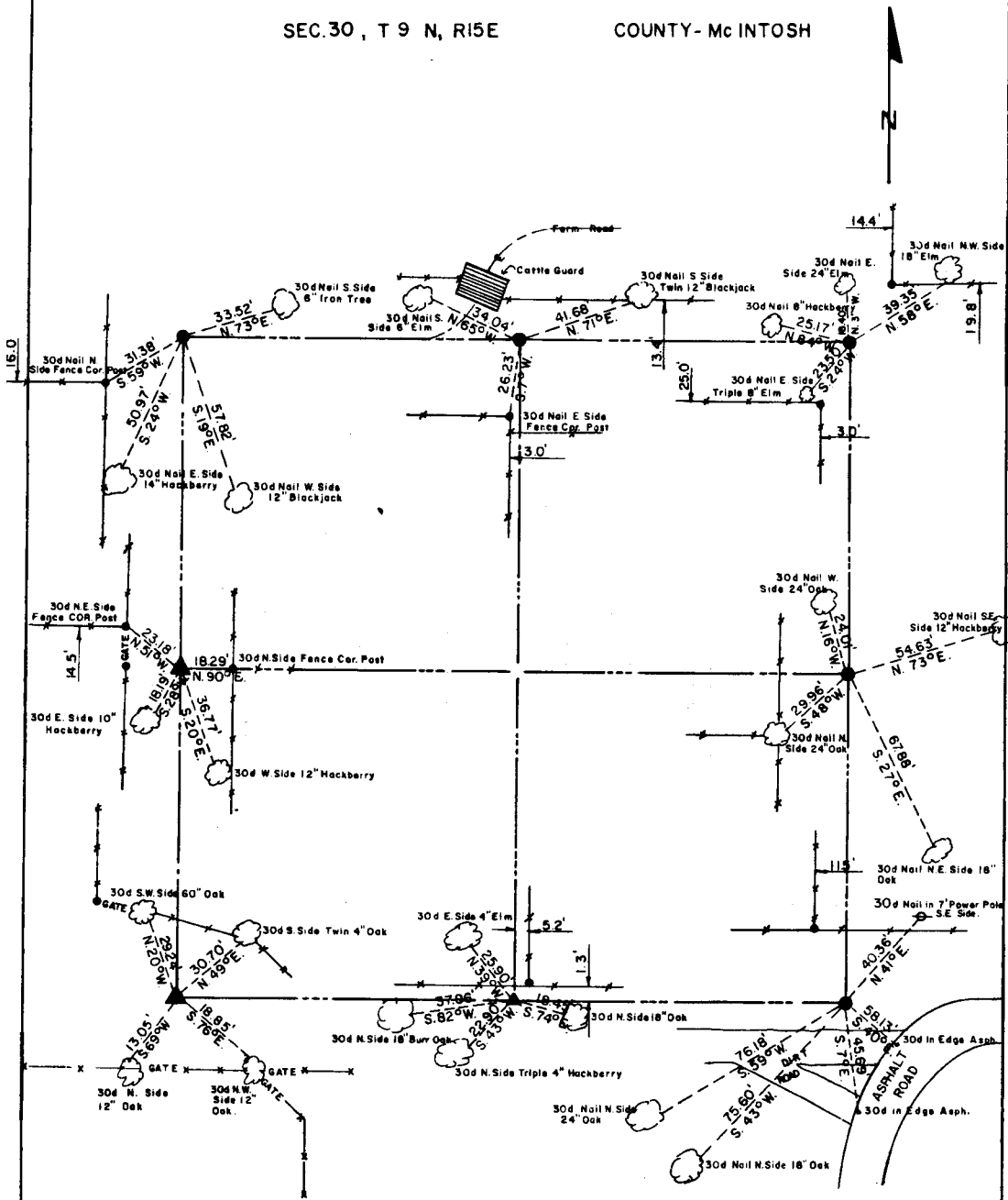
320

# EUFAULA LAKE OKLAHOMA

SECTION AND QUARTER SECTION CORNER  
REFERENCES FOR

SEC. 30, T 9 N, R 15 E

COUNTY - McINTOSH



Scale: 1" = 50'  
Date: April, 1978  
Field book No. E-1370

- LEGEND**
- △ - Monument
  - - Original Corner
  - - Iron pin (1")