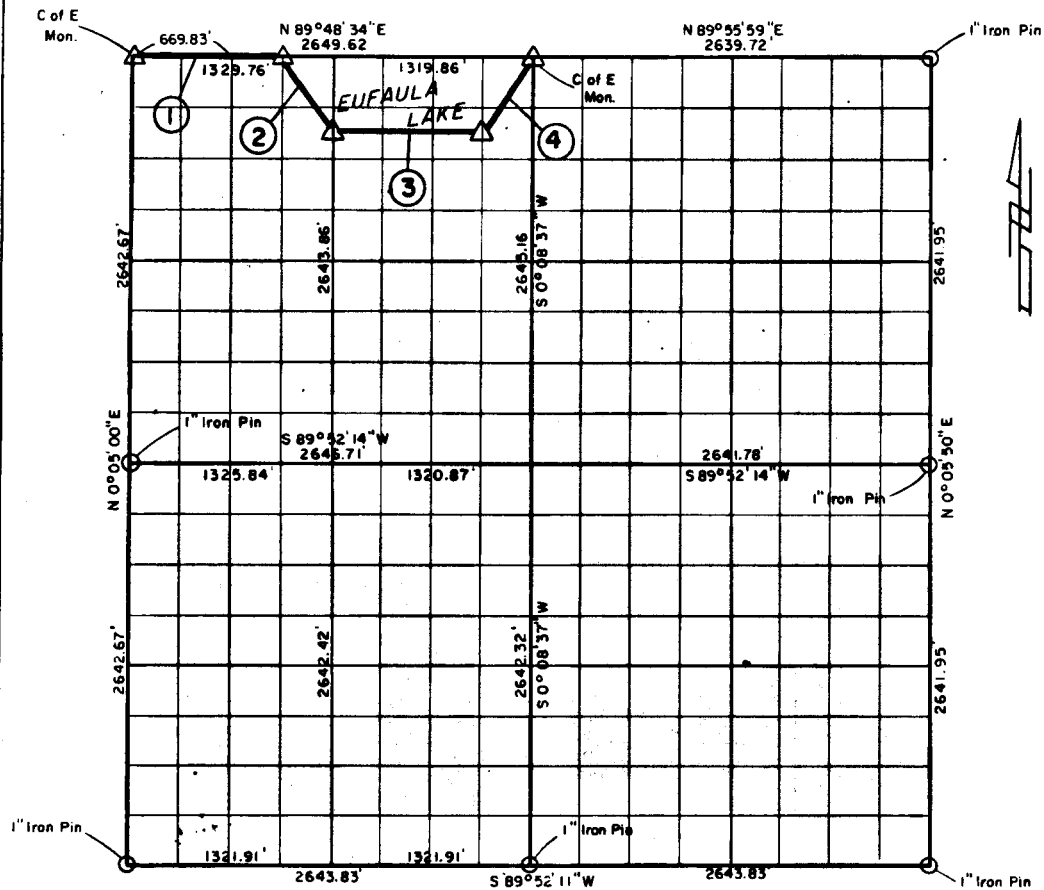


PARTIAL BOUNDARY SURVEYS  
 EUFAULA LAKE, AREA "F"  
 CANADIAN RIVER, OKLAHOMA

Performed Under Contract Number DACW 56-77-C-0256

SEC. 31, T. 9 N., R. 15 E., COUNTY MCINTOSH



Course No.	Distance	Bearing	Course No.	Distance	Bearing
1	999.80'	N 89° 48' 34" E			
2	593.78'	S 33° 35' 30" E			
3	990.04'	N 89° 49' 15" E			
4	597.27'	N 33° 41' 00" E			

CERTIFICATE OF SURVEY  
 Field Book No. E-1340 Date 1978  
 I Herby Certify That The  
 Above Plat Is a True and  
 Correct Representation of  
 The Survey Made in Sec. 31  
 T. 9 N., R. 15 E.  
 Jimmie Dale Niskie  
 Registered Land Surveyor No. 78

CRAIG & KEITHLINE  
 Consulting Engineers  
 For  
 U.S. ARMY ENGINEER DISTRICT, TULSA  
 CORPS OF ENGINEERS  
 SHEET 1 of 1

338  
 Δ MONUMENT  
 □ ORIGINAL CORNER  
 O IRON PIN

# EUFAULA LAKE OKLAHOMA

SECTION AND QUARTER SECTION CORNER .  
REFERENCES FOR

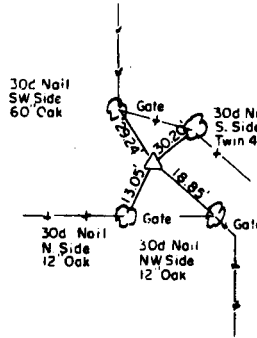
SEC. 31, T 9 N, R 15 E

COUNTY - MCINTOSH

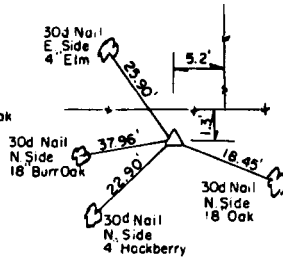
N.W. CORNER

NORTH 1/4 COR.

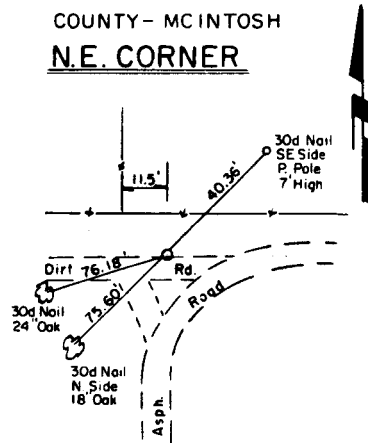
N.E. CORNER



C of E MONUMENT



C of E MONUMENT

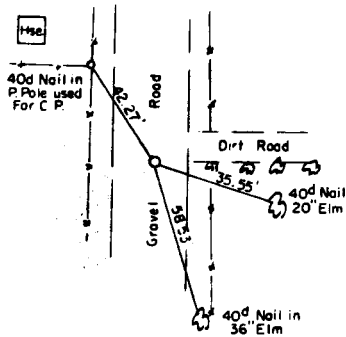


1" IRON PIN

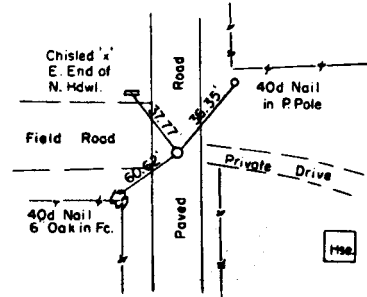
WEST 1/4 COR.

CENTER SEC.

EAST 1/4 COR.



1" IRON PIN

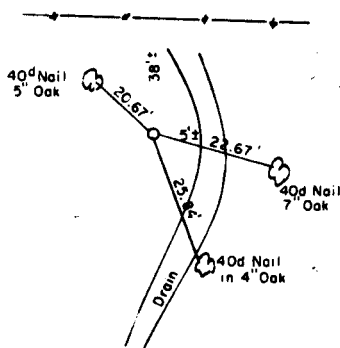


1" IRON PIN

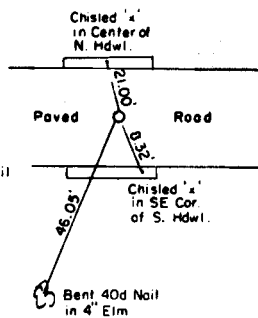
S.W. CORNER

SOUTH 1/4 COR.

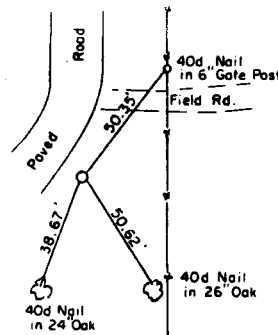
S.E. CORNER



1" IRON PIN



1" IRON PIN



1" IRON PIN