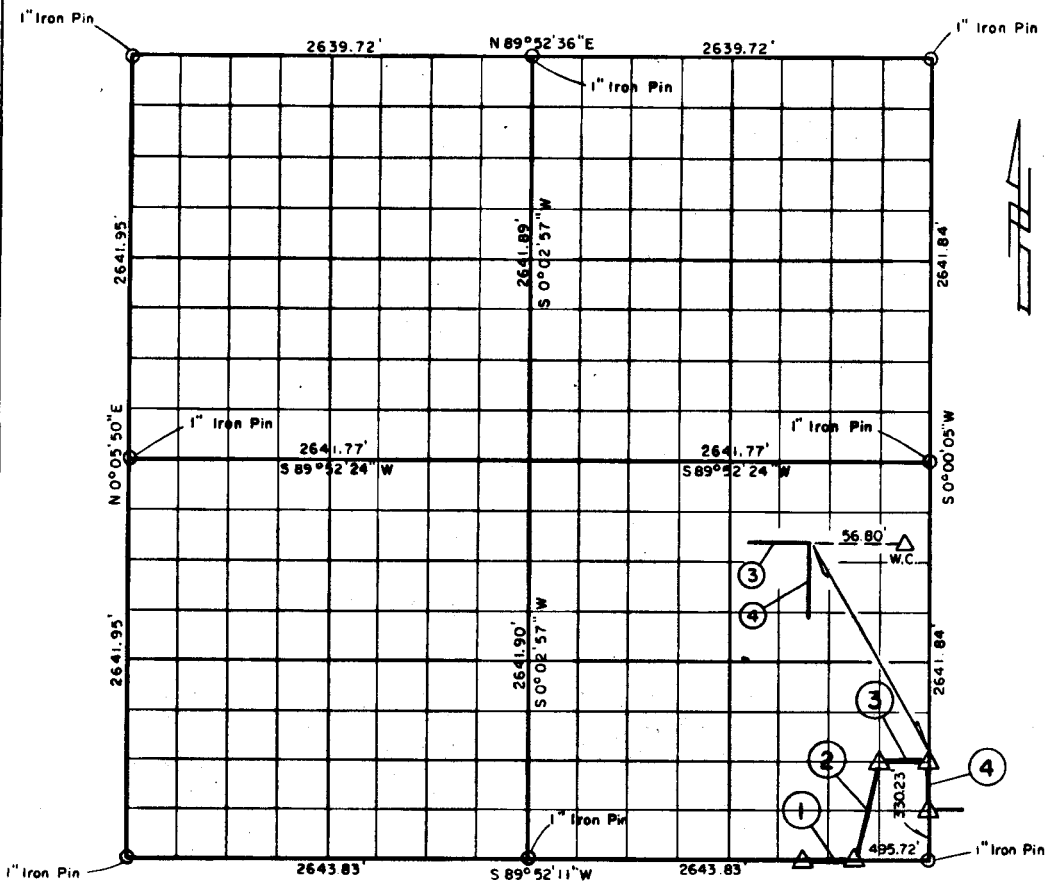


PARTIAL BOUNDARY SURVEYS
 EUFAULA LAKE, AREA "F"
 CANADIAN RIVER, OKLAHOMA

Performed Under Contract Number DACW 56-77-C-0256

SEC. 32, T. 9 N., R. 15 E., COUNTY MCINTOSH



Course No.	Distance	Bearing	Course No.	Distance	Bearing
1	371.46'	N 89° 52' 11" E			
2	681.21'	N 14° 02' 43" E			
3	330.42'	N 89° 52' 14" E			
4	330.23'	S 0° 00' 05" W			

CERTIFICATE OF SURVEY Field Book No. E-1341 Date 1978

I hereby certify that the above plat is a true and correct representation of the survey made in Sec. 32, U.S. ARMY ENGINEER DISTRICT, TULSA CORPS OF ENGINEERS

T. 9 N., R. 15 E.
Jimie Dale Nickle
 Jimie Dale Nickle
 Registered Land Surveyor No. 78

CRAIG & KEITHLINE
 Consulting Engineers
 For
 SHEET 1 of 1

339
 Δ MONUMENT
 □ ORIGINAL CORNER
 ○ IRON PIN

EUFAULA LAKE OKLAHOMA

SECTION AND QUARTER SECTION CORNER
REFERENCES FOR

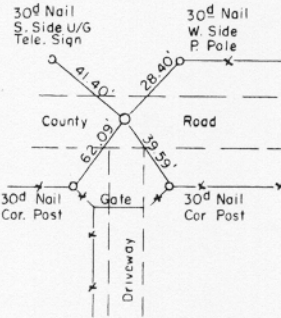
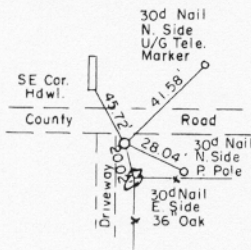
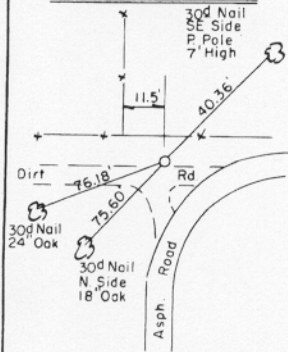
SEC. 32, T 9 N, R 15 E

COUNTY - MC INTOSH

N.W. CORNER

NORTH 1/4 COR.

N.E. CORNER



1" IRON PIN

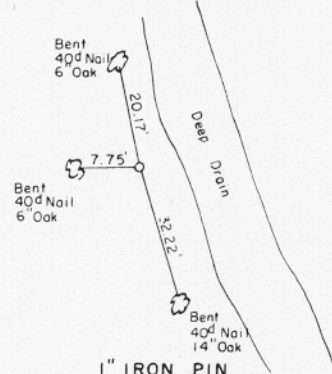
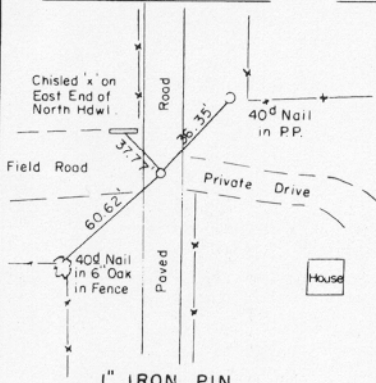
1" IRON PIN

1" IRON PIN

WEST 1/4 COR.

CENTER SEC.

EAST 1/4 COR.



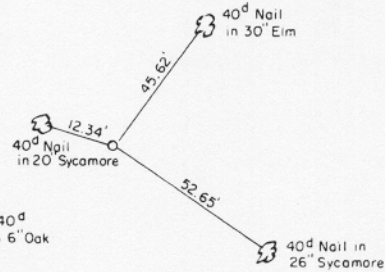
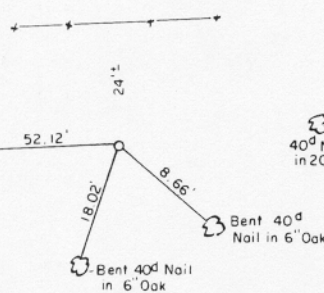
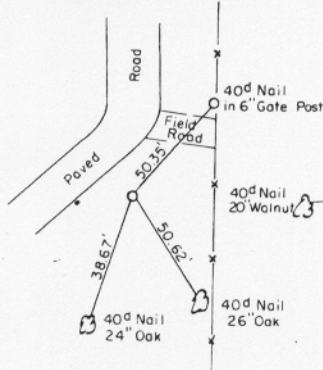
1" IRON PIN

1" IRON PIN

S.W. CORNER

SOUTH 1/4 COR.

S.E. CORNER



1" IRON PIN

1" IRON PIN

1" IRON PIN