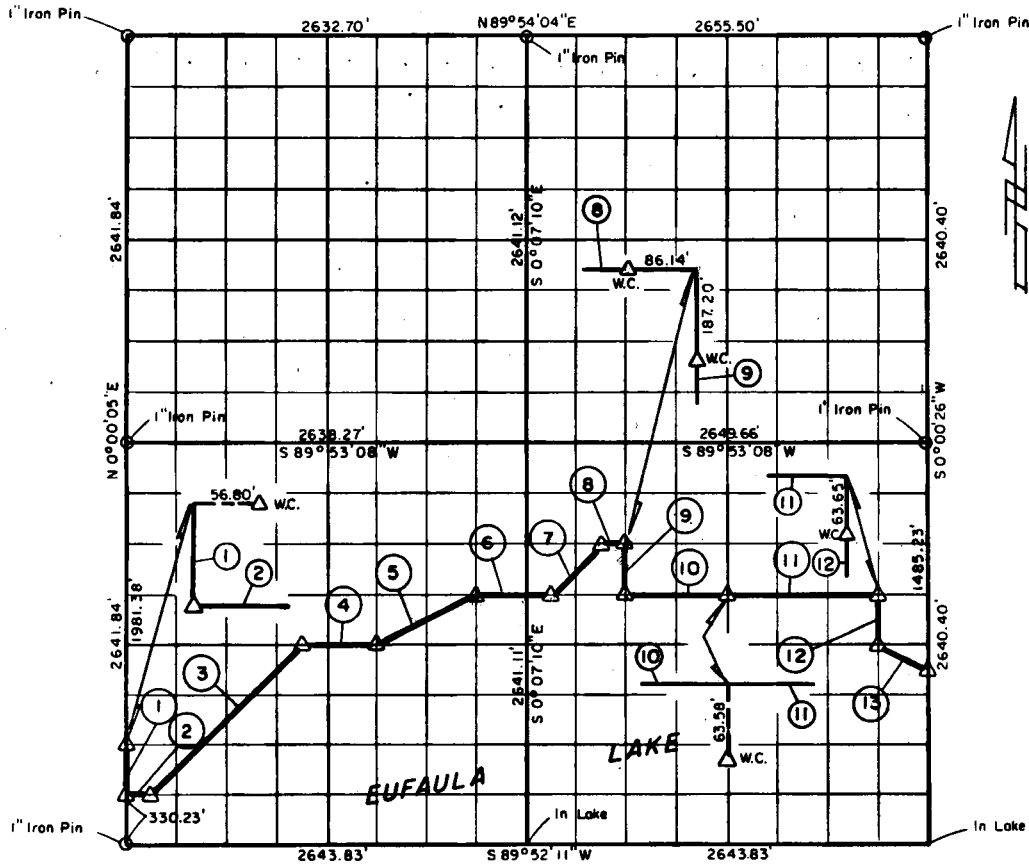


PARTIAL BOUNDARY SURVEYS
 EUFAULA LAKE, AREA "F"
 CANADIAN RIVER, OKLAHOMA

Performed Under Contract Number DACW 56-77-C-0256

SEC. 33, T. 9 N., R. 15 E., COUNTY MCINTOSH



Course No.	Distance	Bearing	Course No.	Distance	Bearing
1	330.23'	S 0°00'05" W			
2	165.20'	N 89°52'18" E			
3	1402.25'	N 44°55'40" E			
4	495.20'	N 89°52'39" E			
5	738.30'	N 63°18'53" E			
6	495.51'	N 89°52'47" E			
7	467.53'	N 44°57'46" E			
8	165.51'	N 89°52'54" E			
9	330.12'	S 0°05'16" E			
10	661.87'	N 89°52'47" E			
11	992.80'	N 89°52'47" E			
12	330.06'	S 0°00'31" E			
13	369.38'	S 63°35'15" E			

Field Book No. E-1342 Date 1978

CERTIFICATE OF SURVEY

I Hereby Certify That the Above Plat is a True and Correct Representation of

The Survey of Section 33, T. 9 N., R. 15 E.,
 Jimmie Dale Nickle
 Registered Land Surveyor No. 78

CRAIG & KEITHLINE
 Consulting Engineers

For
 U.S. ARMY ENGINEER DISTRICT, TULSA
 CORPS OF ENGINEERS

SHEET 1 of 1

340
 Δ MONUMENT
 □ ORIGINAL CORNER
 ○ IRON PIN

EUFAULA LAKE OKLAHOMA

SECTION AND QUARTER SECTION CORNER
REFERENCES FOR

SEC. 33, T 9 N, R 15 E COUNTY - MCINTOSH

