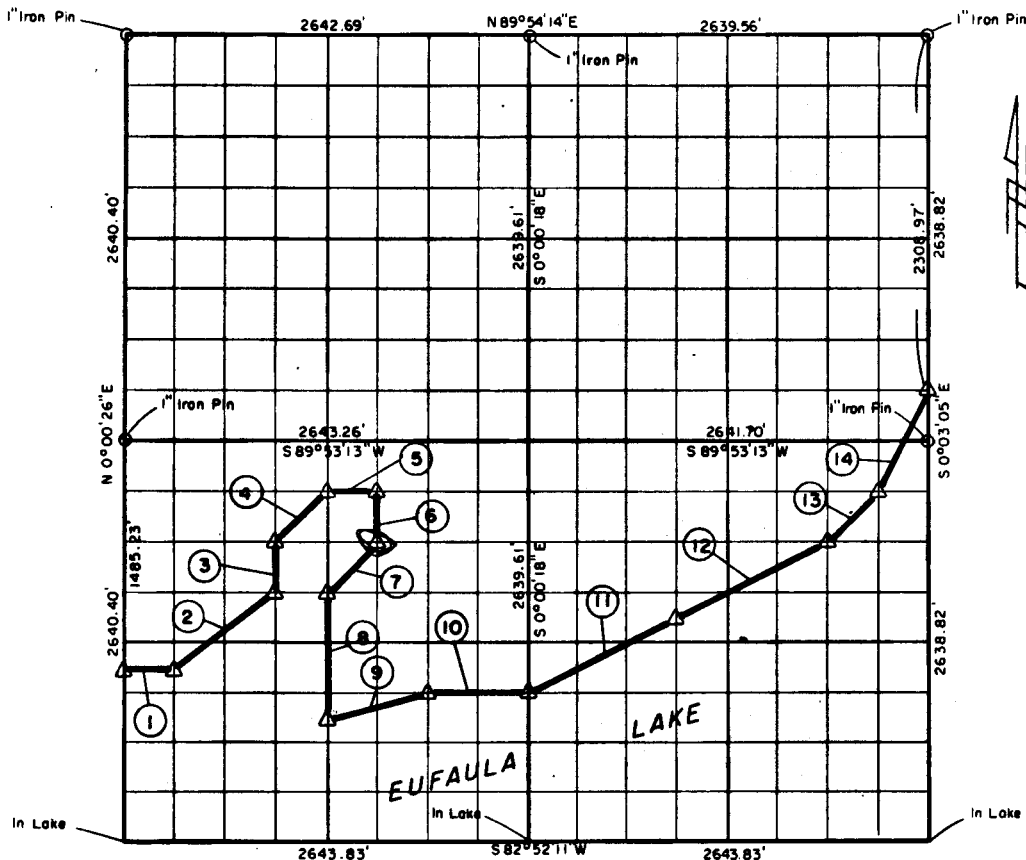


PARTIAL BOUNDARY SURVEYS
 EUFAULA LAKE, AREA "F"
 CANADIAN RIVER, OKLAHOMA

Performed Under Contract Number DACW 56-77-C-0256

SEC. 34, T. 9 N., R. 15 E., COUNTY MCINTOSH



Course No.	Distance	Bearing	Course No.	Distance	Bearing
1	330.45'	N 89° 52' 38" E	14	738.08'	N 26° 31' 43" E
2	826.58'	N 53° 05' 25" E			
3	330.01'	N 0° 00' 10" E			
4	467.46'	N 44° 58' 42" E			
5	330.40'	N 89° 53' 06" E			
6	329.99'	S 0° 00' 01" E			
7	467.48'	S 44° 58' 42" W			
8	825.00'	S 0° 00' 04" W			
9	681.54'	N 75° 51' 56" E			
10	660.91'	N 89° 52' 35" E			
11	1108.43'	N 63° 21' 47" E			
12	1108.43'	N 63° 21' 47" E			
13	467.09'	N 44° 57' 18" E			

CERTIFICATE OF SURVEY

Field Book No. E-1343 Date 1978

I hereby certify that the above plat is a true and correct representation of the survey made in Sec 34, T. 9 N., R. 15 E.,

James Dale North
 Jimmie Dale North
 Registered Land Surveyor No. 78

CRAIG & KEITHLINE
 Consulting Engineers

For
 U.S. ARMY ENGINEER DISTRICT, TULSA
 CORPS OF ENGINEERS

SHEET 1 of 1

341
 Δ MONUMENT
 □ ORIGINAL CORNER
 ○ IRON PIN

EUFAULA LAKE OKLAHOMA

SECTION AND QUARTER SECTION CORNER,
REFERENCES FOR

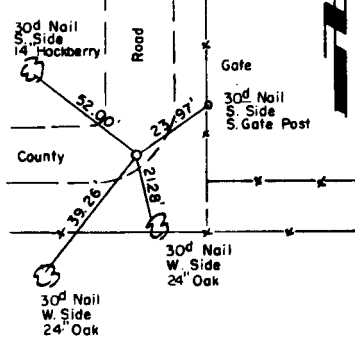
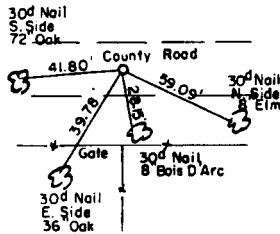
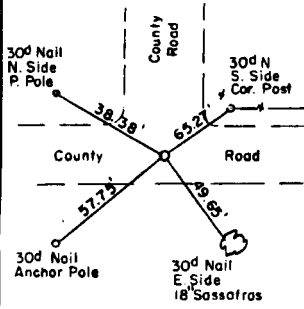
SEC. 34, T9N, R15E

COUNTY- MCINTOSH

N.W. CORNER

NORTH 1/4 COR.

N.E. CORNER



1" IRON PIN

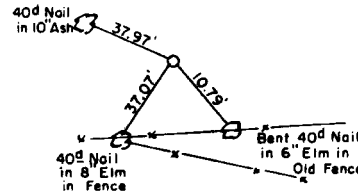
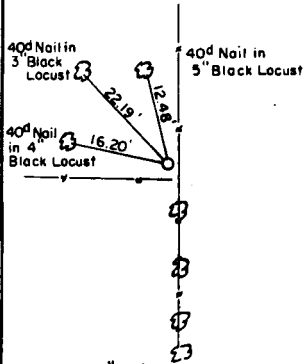
1" IRON PIN

1" IRON PIN

WEST 1/4 COR.

CENTER SEC.

EAST 1/4 COR.



1" IRON PIN

1" IRON PIN

S.W. CORNER

SOUTH 1/4 COR.

S.E. CORNER

IN LAKE

IN LAKE

IN LAKE