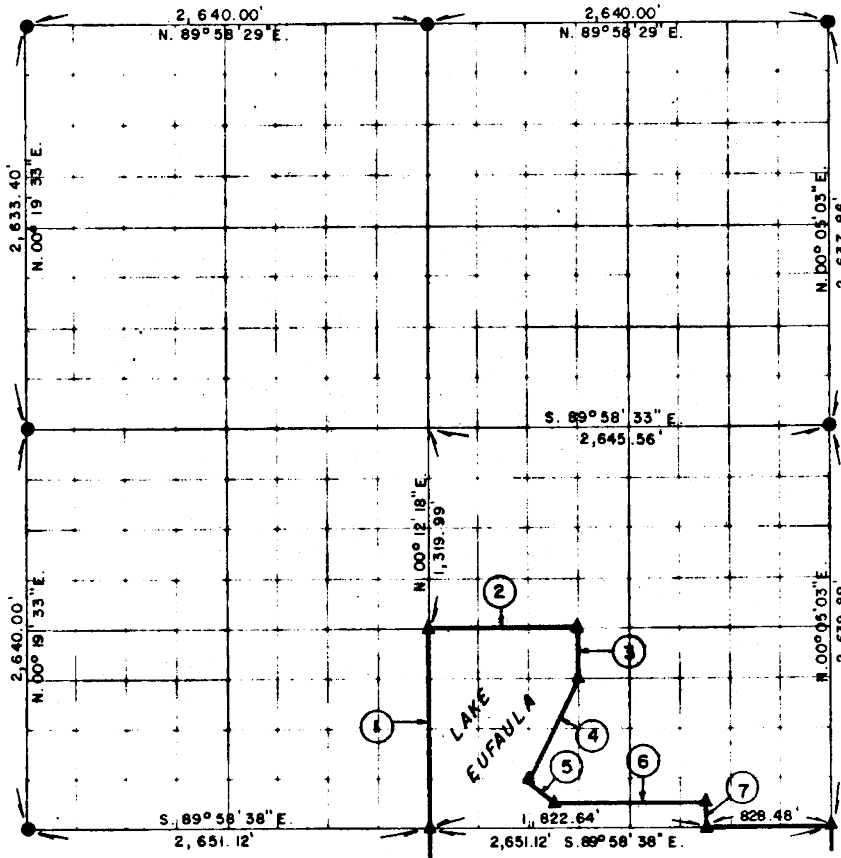


PARTIAL BOUNDARY SURVEYS
EUFULA LAKE
OKLAHOMA

Performed Under Contract Number DACW 56-76-C-0238

SEC. 4, T. 9 N., R. 15 E., COUNTY MCINTOSH



Course No	Distance	Bearing	Course No	Distance	Bearing
1.	1,319.98'	N. 00° 12' 18" E.			
2.	993.13'	S. 89° 58' 35" E.			
3.	329.99'	S. 00° 09' 35" W.			
4.	739.16'	S. 26° 47' 17" W.			
5.	233.51'	S. 45° 01' 07" E.			
6.	994.04'	S. 89° 58' 37" E.			
7.	164.99'	S. 00° 07' 19" W.			

*
CERTIFICATE OF SURVEY
Hereby Certify That The
Above Plat is a True and
Correct Representation of
The Survey Made in Section
4, T. 9 N., R. 15 E., MCINTOSH
COUNTY, OKLAHOMA

Frank P. Pierce
Registered Professional Engineer
Registered Land Surveyor

Field Book No. E 1266 Date MARCH, 1977

MAPCO ENGINEERING CORPORATION
Under The Supervision Of
U.S. ARMY ENGINEER DISTRICT, TULSA
CORPS OF ENGINEERS
SHEET 1 of 2

LEGEND
▲ MONUMENT
□ ORIGINAL CORNER
○ IRON PIN

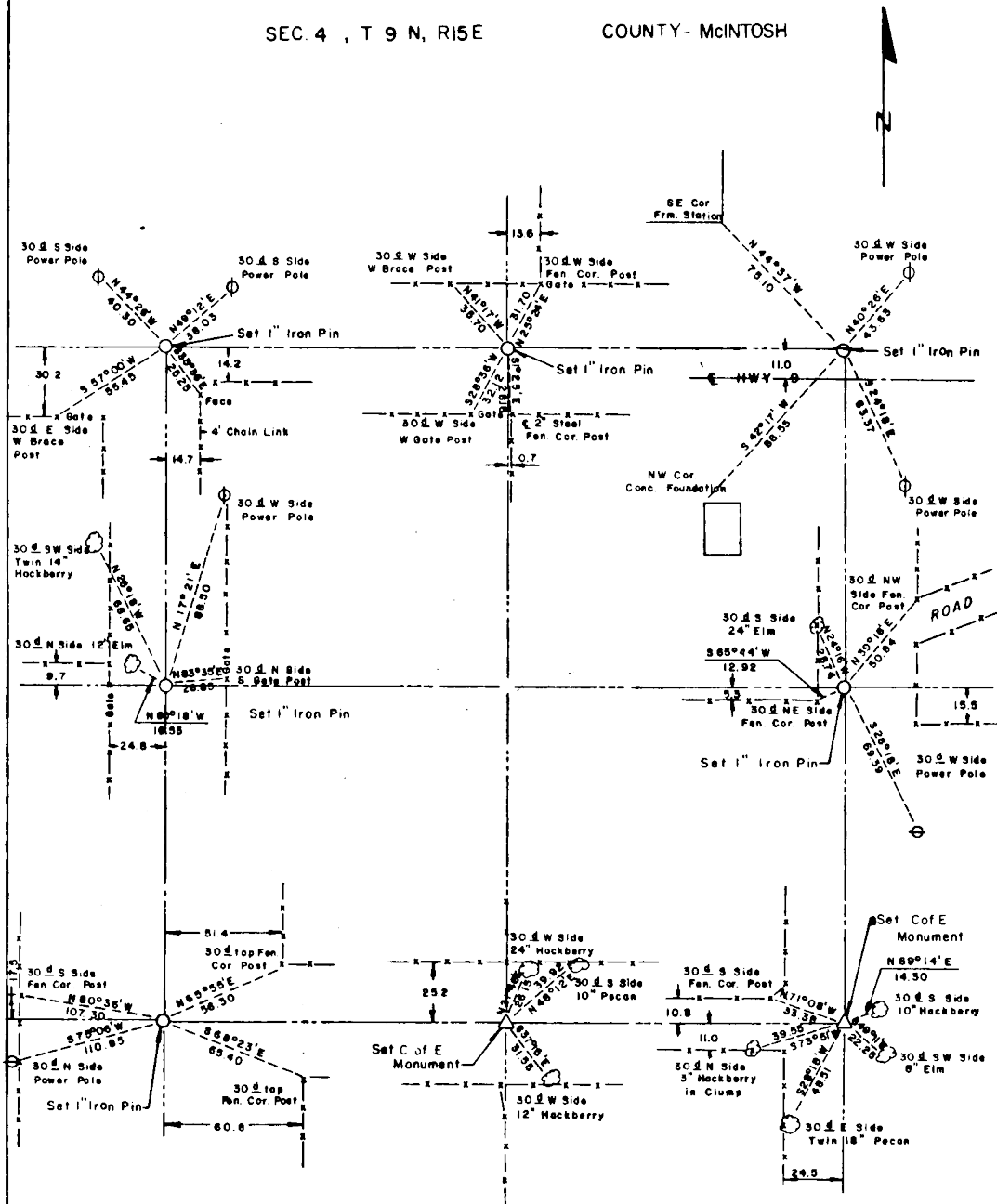
257

EUFAULA LAKE OKLAHOMA

SECTION AND QUARTER SECTION CORNER
REFERENCES FOR

SEC. 4 , T 9 N, R 15 E

COUNTY- MCINTOSH



Scale: 1" = 50'
Date: March, 1977
Field book No. E 1266

LEGEND

- △ - Monument
- - Original Corner
- - Iron pin