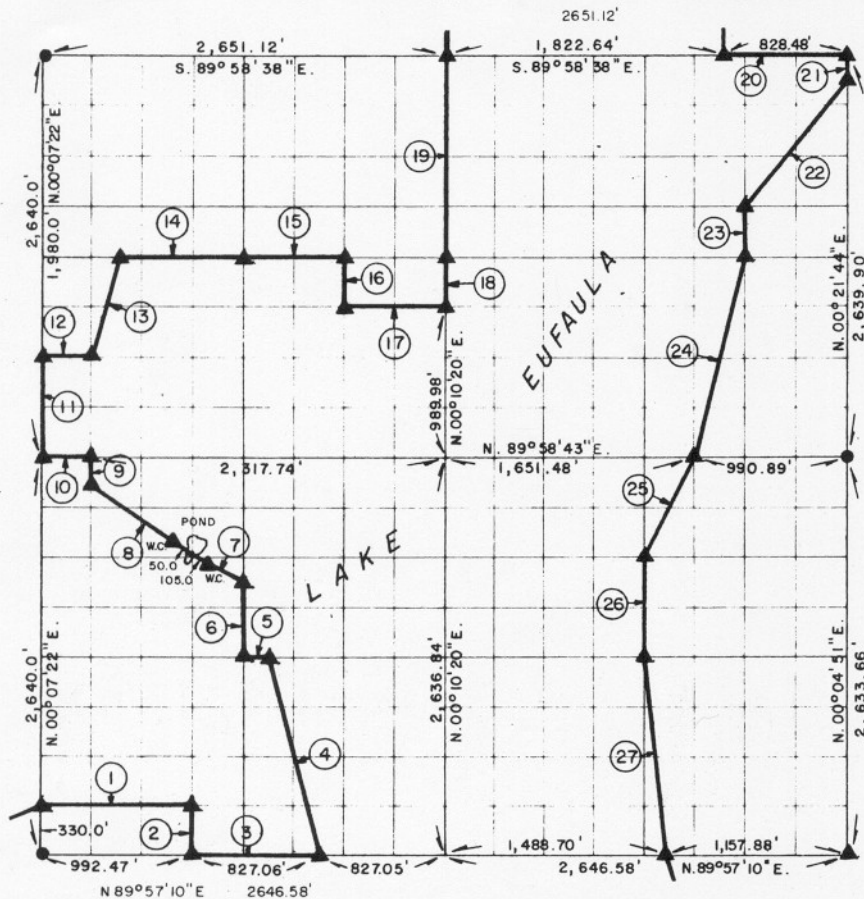


PARTIAL BOUNDARY SURVEYS  
EUFAULA LAKE  
OKLAHOMA

Performed Under Contract Number DACW 56-76-C-0238

SEC. 9, T. 9 N., R. 15 E., COUNTY McINTOSH



| Course No. | Distance  | Bearing           | Course No. | Distance  | Bearing           |
|------------|-----------|-------------------|------------|-----------|-------------------|
| 1.         | 992.57'   | N. 89° 57' 41" E. | 15.        | 662.50'   | S. 89° 58' 40" E. |
| 2.         | 329.85'   | S. 00° 08' 29" W. | 16.        | 329.99'   | S. 00° 09' 36" W. |
| 3.         | 827.06'   | N. 89° 57' 10" E. | 17.        | 662.42'   | S. 89° 58' 41" E. |
| 4.         | 1,358.85' | N. 13° 56' 24" W. | 18.        | 329.99'   | N. 00° 10' 20" E. |
| 5.         | 165.48'   | S. 89° 59' 13" W. | 19.        | 1,319.97' | N. 00° 10' 20" E. |
| 6.         | 494.70'   | N. 00° 08' 51" E. | 20.        | 828.48'   | S. 89° 58' 38" E. |
| 7.         | 369.47'   | N. 63° 29' 15" W. | 21.        | 164.99'   | S. 00° 21' 44" W. |
| 8.         | 825.75'   | N. 53° 10' 17" W. | 22.        | 1,060.78' | S. 38° 58' 21" W. |
| 9.         | 164.98'   | N. 00° 07' 44" E. | 23.        | 329.99'   | S. 00° 18' 53" W. |
| 10.        | 331.11'   | N. 89° 58' 43" W. | 24.        | 1,362.29' | S. 14° 20' 46" W. |
| 11.        | 660.00'   | N. 00° 07' 22" E. | 25.        | 737.51'   | S. 26° 43' 56" W. |
| 12.        | 331.18'   | S. 89° 58' 42" E. | 26.        | 658.81'   | S. 00° 07' 35" W. |
| 13.        | 680.76'   | N. 14° 12' 35" E. | 27.        | 1,327.47' | S. 07° 01' 53" E. |
| 14.        | 828.12'   | S. 89° 58' 40" E. |            |           |                   |

Field Book No. E1268 Date MARCH, 1977

CERTIFICATE OF SURVEY

I hereby Certify That The Above Plot is a True and Correct Representation of The Survey Made in Section 9, T. 9 N., R. 15 E., McINTOSH COUNTY, OKLAHOMA

*Frank P. Preece*  
Registered Professional Engineer  
Registered Land Surveyor

MAPCO ENGINEERING CORPORATION

Under The Supervision Of

U.S. ARMY ENGINEER DISTRICT, TULSA  
CORPS OF ENGINEERS

SHEET 1 of 2

LEGEND

- ▲ MONUMENT
- ORIGINAL CORNER
- IRON PIN

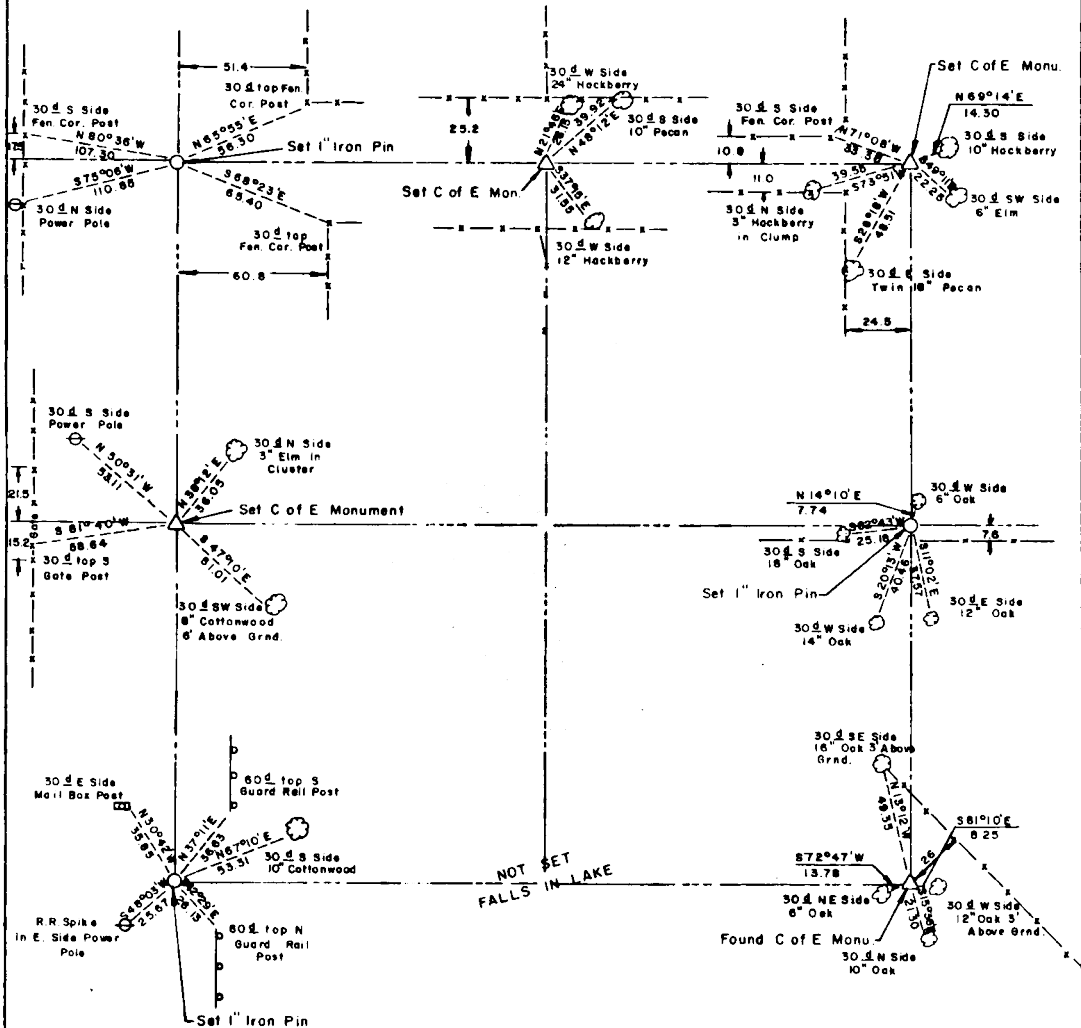
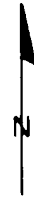
271

# EUFAULA LAKE OKLAHOMA

SECTION AND QUARTER SECTION CORNER  
REFERENCES FOR

SEC 9 , T 9 N, R15E

COUNTY - MCINTOSH



Scale 1" = 50'  
Date March, 1977  
Field book No. E1268

- LEGEND**
- △ - Monument
  - - Original Corner
  - - Iron pin