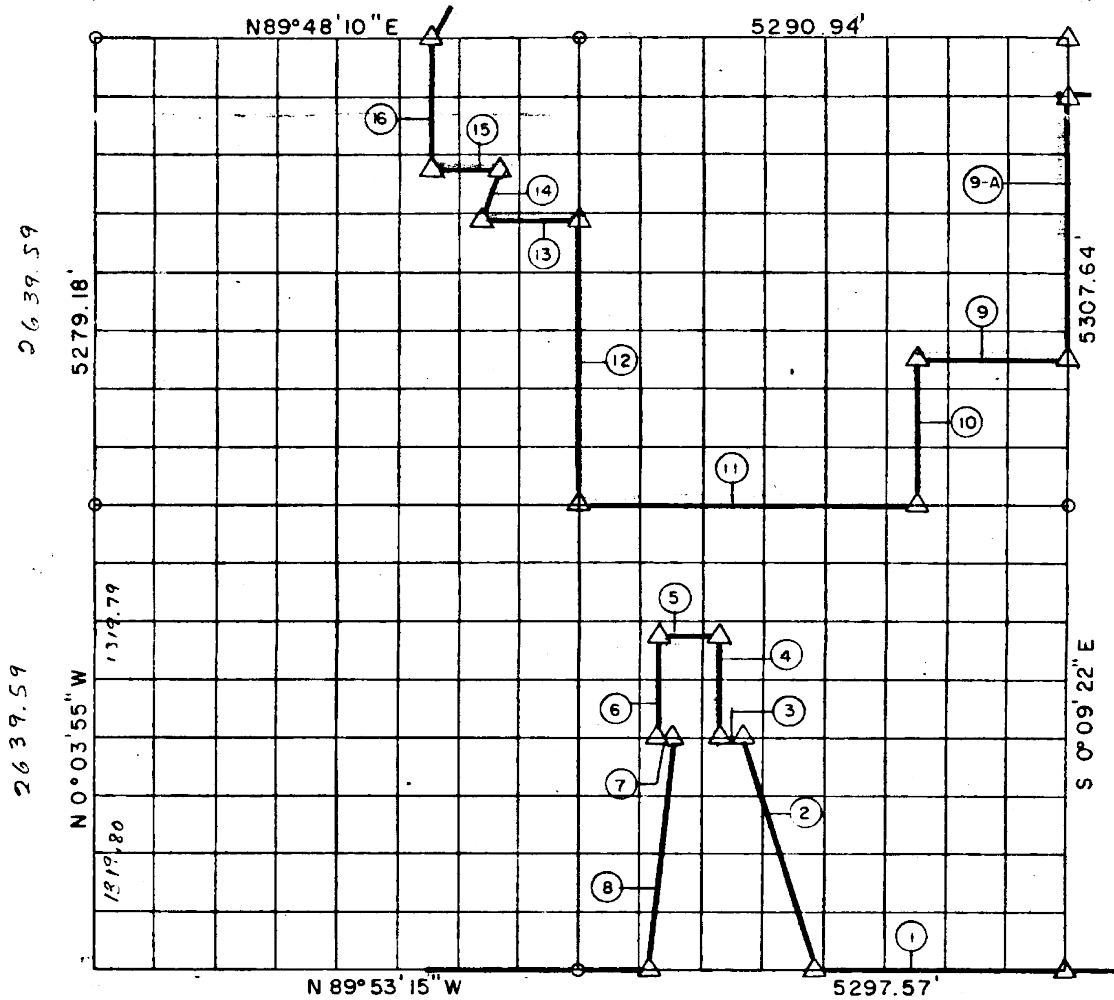


C. 11, T 9 N, R 16 E McINTOSH COUNTY



Course No.	Distance	Bearing	Course No.	Distance	Bearing
1	1362.75'	N 89° 53' 15" W			
2	1383.72'	N 16° 41' 15" W			
3	119.89'	N 89° 56' 45" W			
4	567.00'	N 0° 06' 45" W			
5	368.15'	N 89° 56' 45" W			
6	567.20'	S 01° 52' 45" E			
7	50.00'	S 89° 55' 45" E			
8	1328.65'	S 04° 56' 15" W			
9	827.05'	S 89° 54' 38" W			
9-A	1486.77'	S 0° 09' 22" E			
10	834.60'	S 0° 08' 22" E			
11	1819.95'	S 89° 57' 38" W			
12	1618.10'	N 0° 06' 22" W			
13	539.35'	S 89° 52' 08" W			
14	335.78'	3° 00' Curve			
15	329.60'	S 89° 51' 08" W			
16	701.19'	N 0° 05' 20" W			

Book No. E-924

Date: July, 1964

SHOWN ON SEGMENT N
BY REL DATE 1-4-78

I, James E. Curry, a Registered Professional Engineer, do hereby certify that the above plat is a true and accurate survey of Sec. 11, T 9 N, R 16 E as made under my supervision.

274
James E. Curry
JAMES E. CURRY
Reg. Prof. Engr. No. 1872