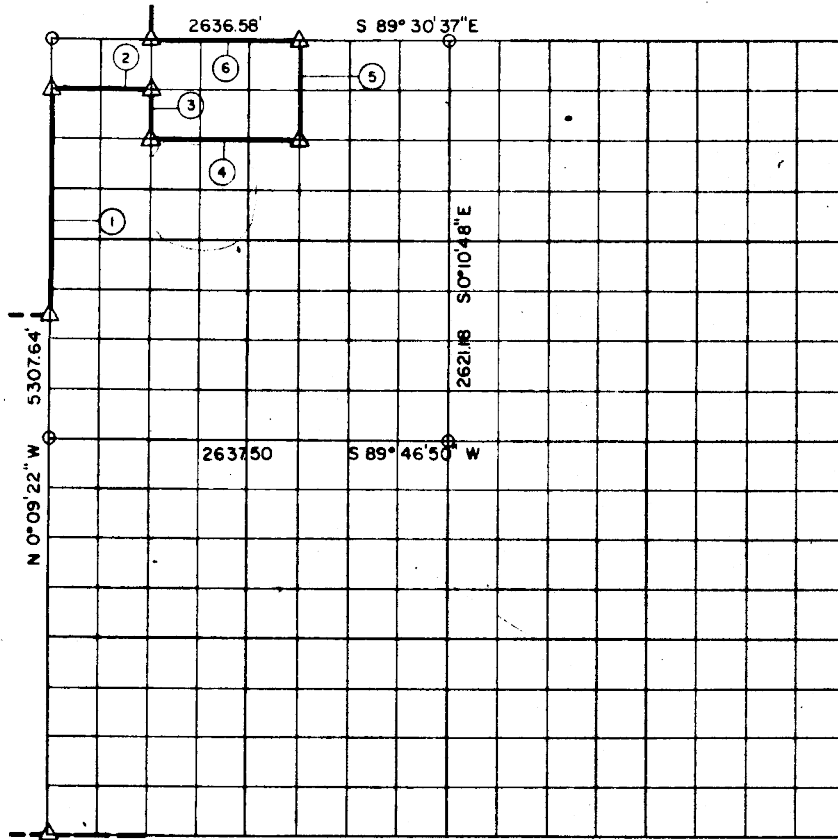


SEC. 12, T 9 N, R 16 E, McINTOSH COUNTY



Course No.	Distance	Bearing	Course No.	Distance	Bearing
1	1486.77'	N 0° 09' 22" W			
2	659.17'	S 89° 35' 56" E			
3	330.71'	S 0° 09' 44" E			
4	988.80'	S 89° 41' 15" E			
5	658.36'	N 0° 10' 16" W			
6	988.71'	N 89° 30' 37" W			
	5112.52				

Book No. E-886 Date: July, 1964

275

I, James E. Curry, a Registered Professional Engineer, do hereby certify that the above plat is a true and accurate survey of Sec. 12, T 9 N, R 16 E as made under my supervision.

*James E. Curry*  
 JAMES E. CURRY  
 Reg. Prof. Eng'r. No. 1872