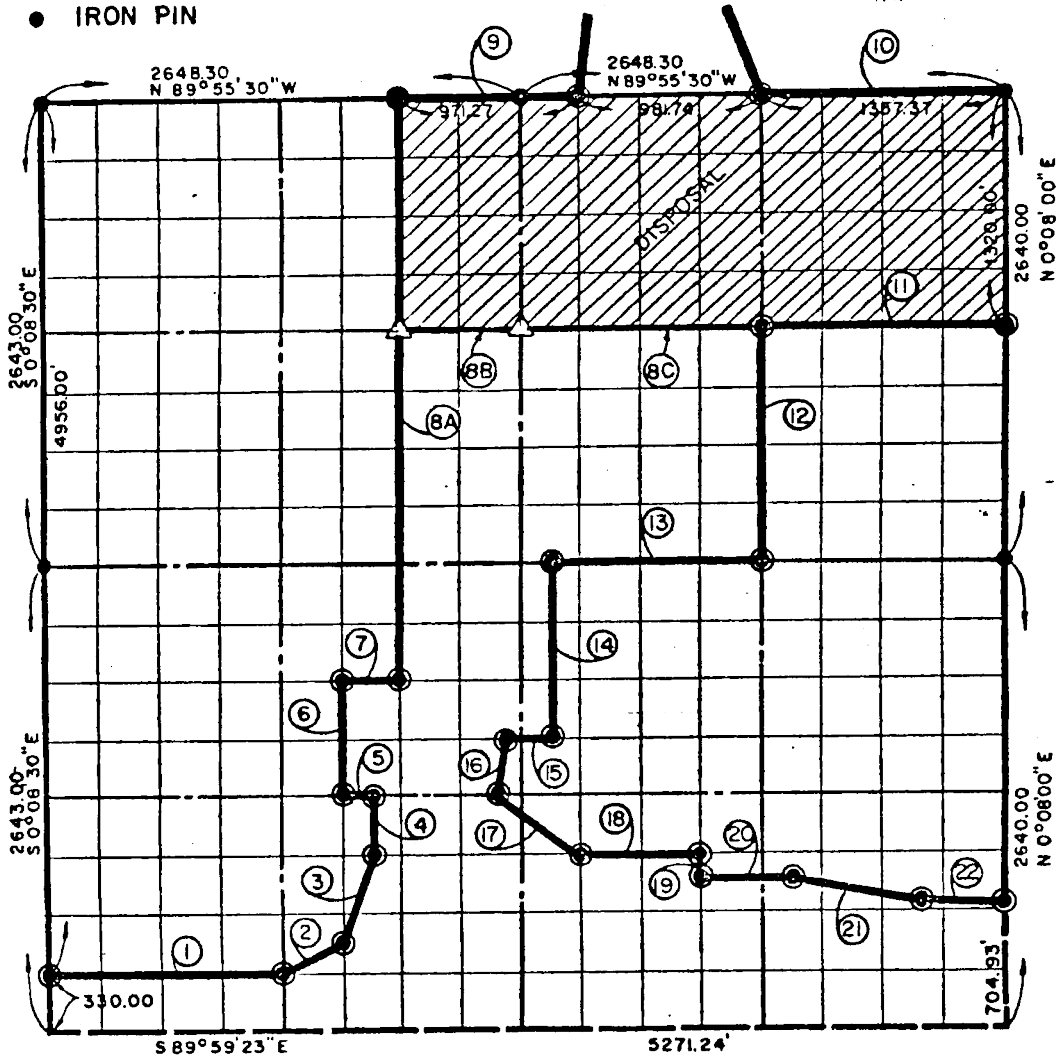


SECTION 14, T 9 N, R 16 E, McINTOSH COUNTY

- BRASS CAP IN CONCRETE
- ORIGINAL STONE
- IRON PIN



REPRODUCED AT GOVT PRINTING OFFICE

| COURSE NO. | DISTANCE | BEARING | COURSE NO. | DISTANCE | BEARING |
|------------|----------|---------------|------------|----------|---------------|
| ① | 1318.21' | S 89°59'23" E | ⑬ | 1155.86' | N 89°57'27" W |
| ② | 368.55' | N 63°20'48" E | ⑭ | 990.53' | S 0°00'02" E |
| ③ | 521.89' | N 18°21'37" E | ⑮ | 173.42' | N 89°58'10" W |
| ④ | 330.25' | N 0°02'50" W | ⑯ | 331.31' | S 4°43'23" W |
| ⑤ | 164.92' | N 89°58'25" W | ⑰ | 492.62' | S 47°53'17" E |
| ⑥ | 660.52' | N 0°03'21" W | ⑱ | 659.50' | S 89°58'39" E |
| ⑦ | 330.05' | S 89°57'56" W | ⑲ | 132.96' | S 0°02'51" W |
| ⑧ | 3302.34' | N 0°02'19" W | ⑳ | 498.04' | N 89°40'00" E |
| ⑨ | 971.27' | S 89°55'30" E | ㉑ | 764.05' | S 79°48'00" E |
| ⑩ | 1357.37' | S 89°55'30" E | ㉒ | 398.70' | S 87°04'30" E |
| ⑪ | 1322.57' | N 89°56'28" W | | | |
| ⑫ | 1320.38' | S 0°03'53" W | | | |

Revised for Land Disposal - C & G Surveying - 1985

- 8A 1320.94 N 0°02'19" W
- 8B 661.28 S 89°56'28" E
- 8C 1322.57 S 89°56'28" E

244

John Carney, a Registered Professional Engineer, do hereby certify that the above plat is a true and accurate survey of c. 14, T. 9 N, R. 16 E. as made under my supervision.

John Carney