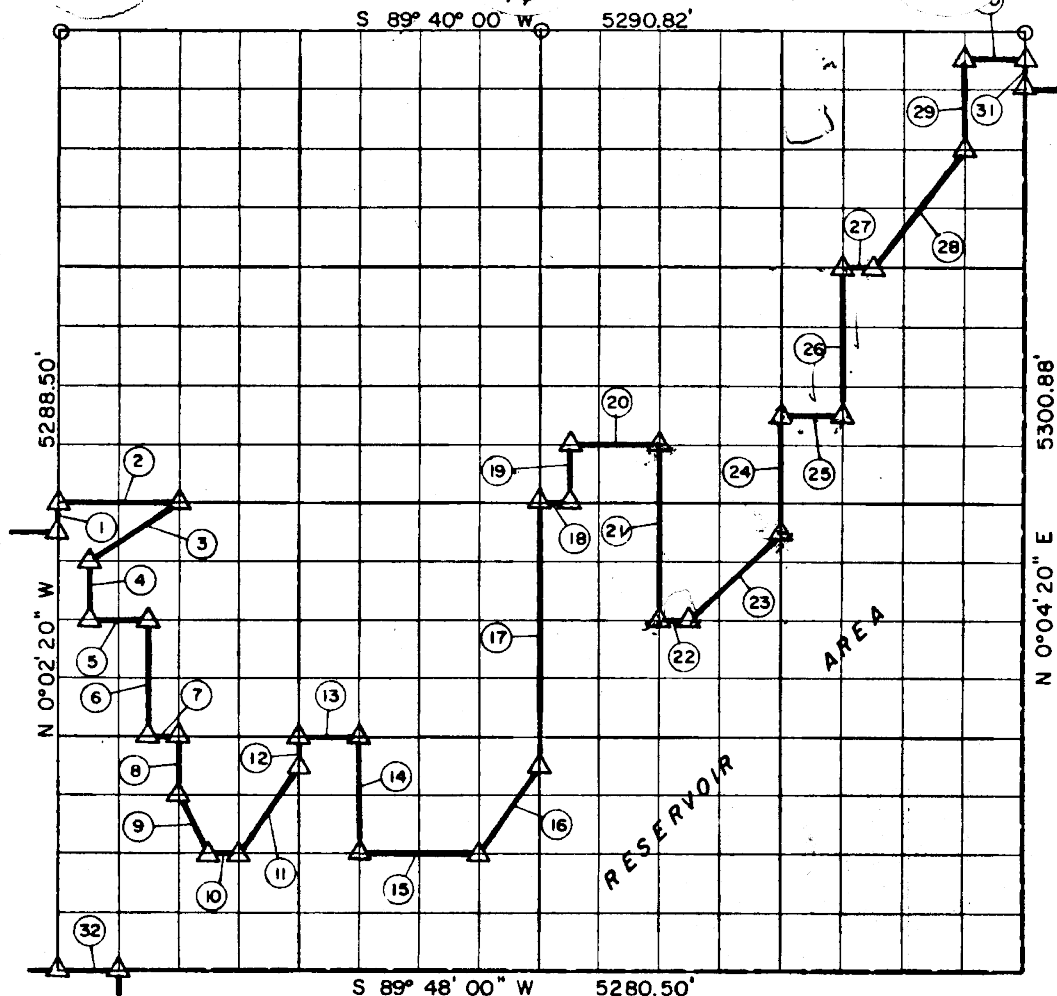


R16E



Course No.	Distance	Bearing	Course No.	Distance	Bearing
1	165.27'	N 0° 02' 20" W	20	495.59'	N 89° 43' 30" E
2	660.70'	N 89° 44' 00" E	21	993.04'	S 0° 01' 50" W
3	596.77'	S 56° 05' 55" W	22	165.14'	N 89° 45' 00" E
4	330.56'	S 0° 02' 08" E	23	703.31'	N 44° 49' 32" E
5	330.27'	N 89° 45' 00" E	24	662.22'	N 0° 02' 40" E
6	661.21'	S 0° 01' 43" E	25	330.41'	N 89° 43' 15" E
7	165.10'	N 89° 46' 00" E	26	827.90'	N 0° 03' 05" E
8	330.63'	S 0° 01' 30" E	27	165.26'	N 89° 42' 00" E
9	369.05'	S 26° 35' 32" E	28	830.00'	N 36° 44' 30" E
10	165.06'	N 89° 47' 00" E	29	496.88'	N 0° 03' 55" E
11	596.86'	N 33° 33' 35" E	30	330.66'	N 89° 40' 15" E
12	165.36'	N 0° 00' 40" W	31	165.65'	S 0° 04' 20" W
13	330.19'	N 89° 46' 00" E	32	330.03'	S 89° 48' 00" W
14	661.55'	S 0° 00' 15" E			
15	660.22'	N 89° 47' 00" E			
16	597.24'	N 33° 34' 12" E			
17	1489.13'	N 0° 01' 00" E			
18	165.17'	N 89° 44' 00" E			
19	330.94'	N 0° 01' 12" E			

15,267.37

Book No. E-930

Date: March, 1965

297

**LEGEND**

- 5/8" Rods w/Caps
- △ C. of E. Mon.
- Measured Line
- Calculated Line

I, James E. Curry, a Registered Professional Engineer, do hereby certify that the above plat is a true and accurate survey of Sec. 17, T 9 N, R 16 E as made under my supervision

*James E. Curry*  
 JAMES E. CURRY  
 Reg. Prof. Eng'r. No. 1872