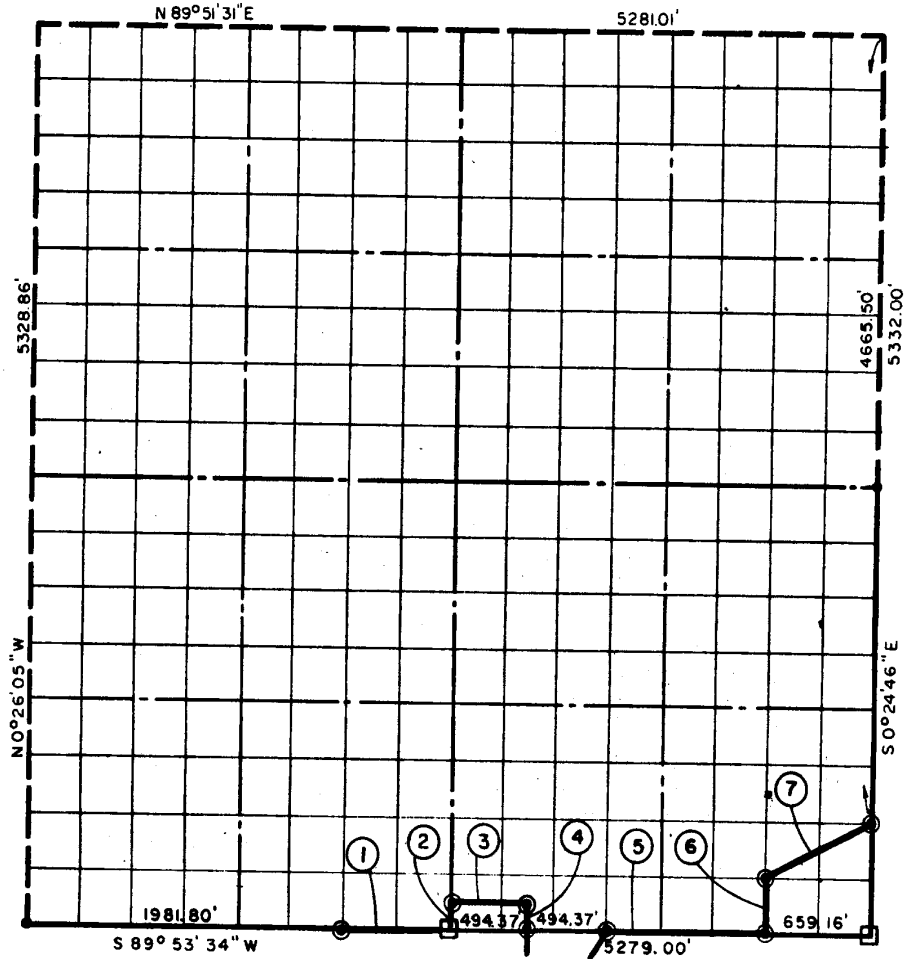


ON 24, T 9 N, R 16 E PITTSBURG COUNT

- ⊙ CAP IN CONCRETE
- AL STONE
- IRON PIN



COURSE NO.	DISTANCE	BEARING	COURSE NO.	DISTANCE	BEARING
①	660.60'	N 89° 53' 34" W			
②	166.58'	N 0° 29' 10" W			
③	494.43'	N 89° 53' 30" E			
④	166.59'	S 0° 28' 20" E			
⑤	988.74'	N 89° 53' 34" W			
⑥	333.23'	N 0° 25' 52" E			
⑦	737.12'	N 63° 00' 49" E			
	3547.29				

BOOK No. 958

311

I, John Carney, a Registered Professional Engineer, do hereby certify that the above plat is a true and accurate survey of Sec. 24, T. 9 N., R. 16 E. as made under my supervision.

3547.29

John Carney
 JOHN CARNEY
 Reg. Prof. Engr. No. 137