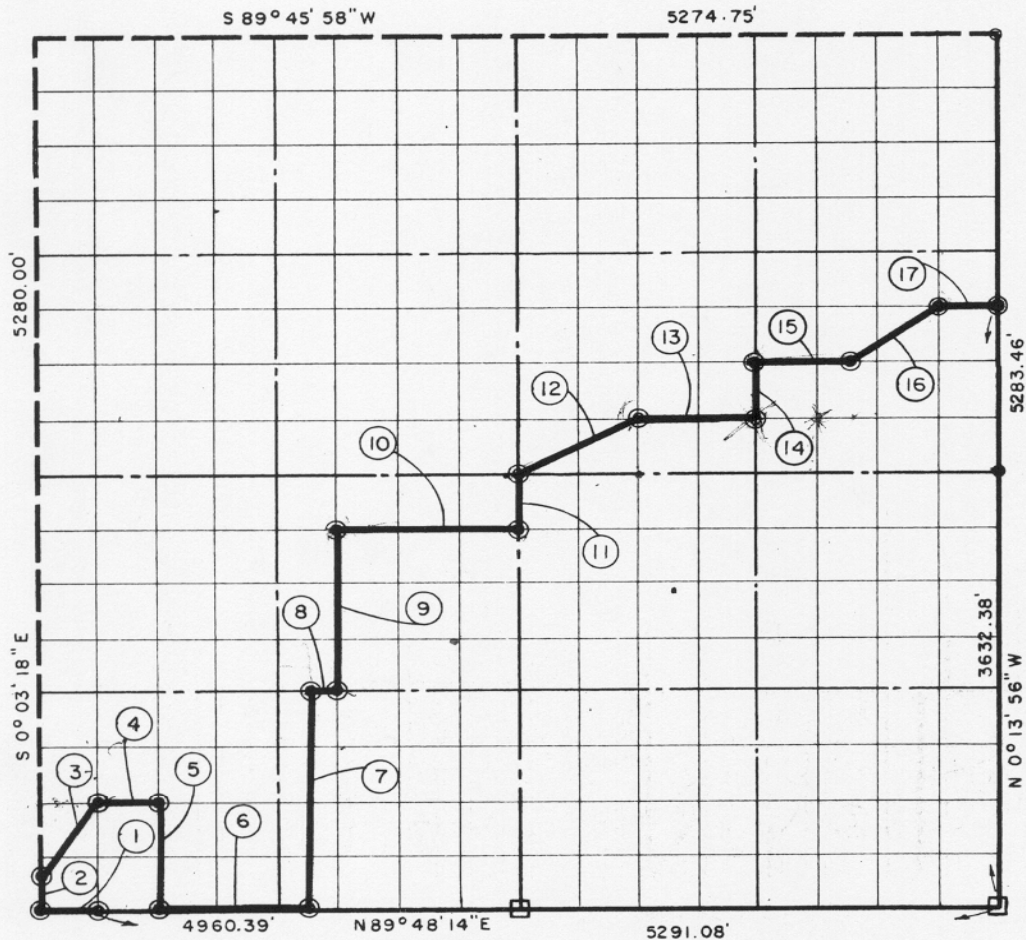


- ⊙ B      IN CONCRETE
- ORIGINAL STONE
- IRON PIN



COURSE NO.	DISTANCE	BEARING	COURSE NO.	DISTANCE	BEARING
①	330.69'	S 89° 48' 14" W	⑩	990.72'	N 89° 47' 14" E
②	165.00'	N 0° 03' 18" W	⑪	330.11'	N 0° 08' 37" W
③	595.93'	N 33° 38' 05" E	⑫	738.52'	N 63° 13' 56" E
④	330.56'	N 89° 47' 57" E	⑬	660.22'	N 89° 46' 57" E
⑤	660.04'	S 0° 04' 38" E	⑭	330.16'	N 0° 11' 16" W
⑥	826.73'	N 89° 48' 14" E	⑮	495.08'	N 89° 46' 49" E
⑦	1320.22'	N 0° 06' 17" W	⑯	595.10'	N 56° 04' 41" E
⑧	165.22'	N 89° 47' 40" E	⑰	329.98'	N 89° 46' 40" E
⑨	990.18'	N 0° 06' 37" W		9689.27	

BOOK No. 960

I, John Carney, a Registered Professional Engineer, do hereby certify that the above plat is a true and accurate survey of Sec. 26, T. 9 N., R. 16 E. as made under my supervision.

9, 1854, 46

*John Carney*  
 JOHN CARNEY  
 Reg. Prof. Engr. No. 137