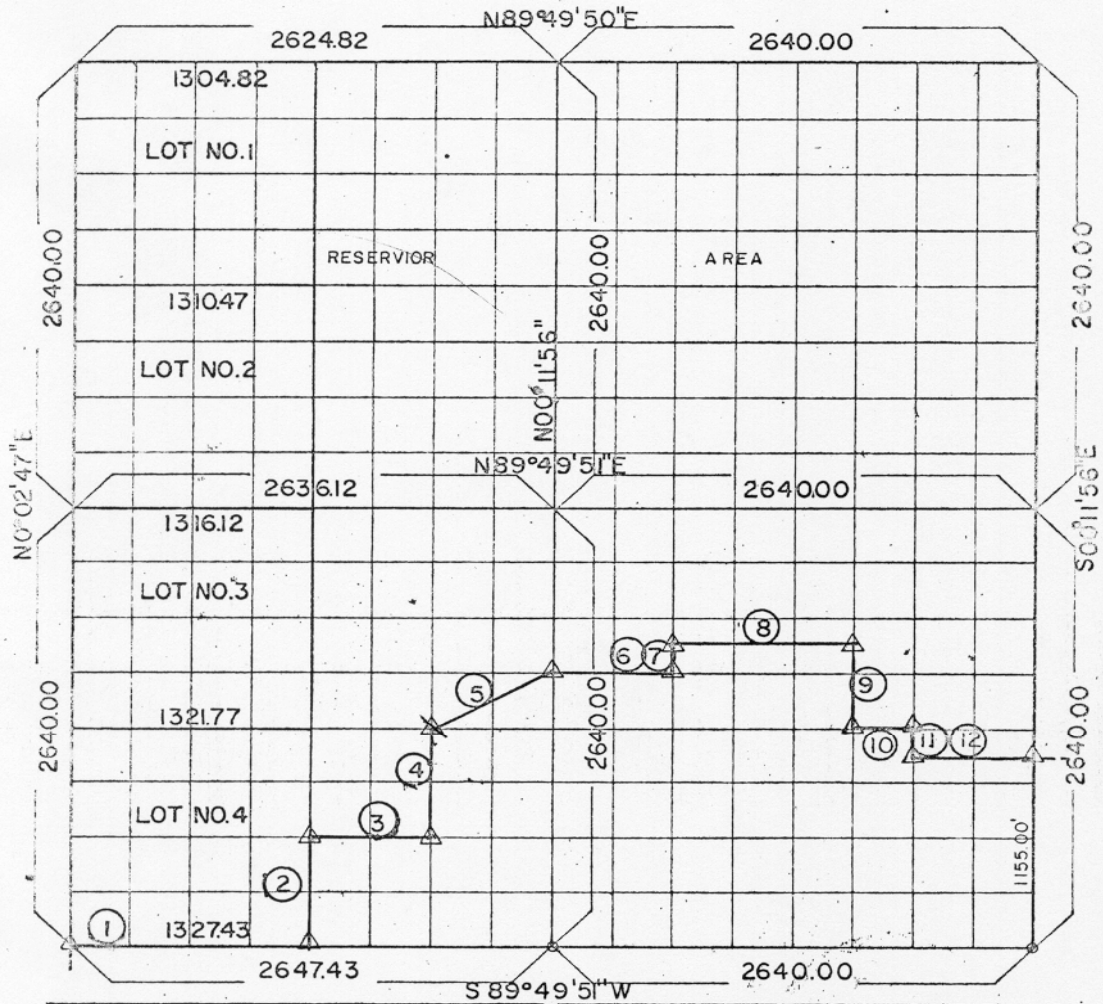


PARTIAL SURVEYS  
EUFALA RESERVOIR

Performed Under Contract Number DACW56-70-C-0103

SEC. 31 T-9-N R-16-E COUNTY PITTSBURG



Course N <sup>o</sup>	Distance	Bearing	Course N <sup>o</sup>	Distance	Bearing
1	1327.43	N89°49'51\"E			
2	660.00	N 0°11'56\"W			
3	660.00	N89°49'51\"E			
4	660.00	N 0°11'56\"W			
5	737.75	N63°15'36\"E			
6	660.00	N89°49'51\"E			
7	165.00	N 0°11'56\"W			
8	990.00	N89°49'51\"E			
9	495.00	S 0°11'56\"E			
10	330.00	N89°49'51\"E			
11	165.00	S 0°11'56\"E			
12	660.00	N89°49'51\"E			

CERTIFICATE OF SURVEY

Field Book N<sup>o</sup> E-1118, Date 8 OCT 1970

FULLER ASSOCIATES  
Consulting Professional Engineers

LEGEND  
▲ MONUMENT  
□ ORIGINAL CORNER  
○ IRON PIN

I HEREBY CERTIFY THAT THE ABOVE PLAN IS A TRUE AND CORRECT REPRESENTATION OF THE SURVEY MADE IN SECTION 31, T-9-N, R-16-E, PITTSBURG COUNTY, OKLAHOMA

Under the Supervision of  
U.S. ARMY ENGINEER DISTRICT, TULSA  
CORPS OF ENGINEERS

*Raymond M. Fuller*  
REGISTERED PROFESSIONAL ENGINEER  
AND  
LAND SURVEYOR

SHEET 1 of 1

344