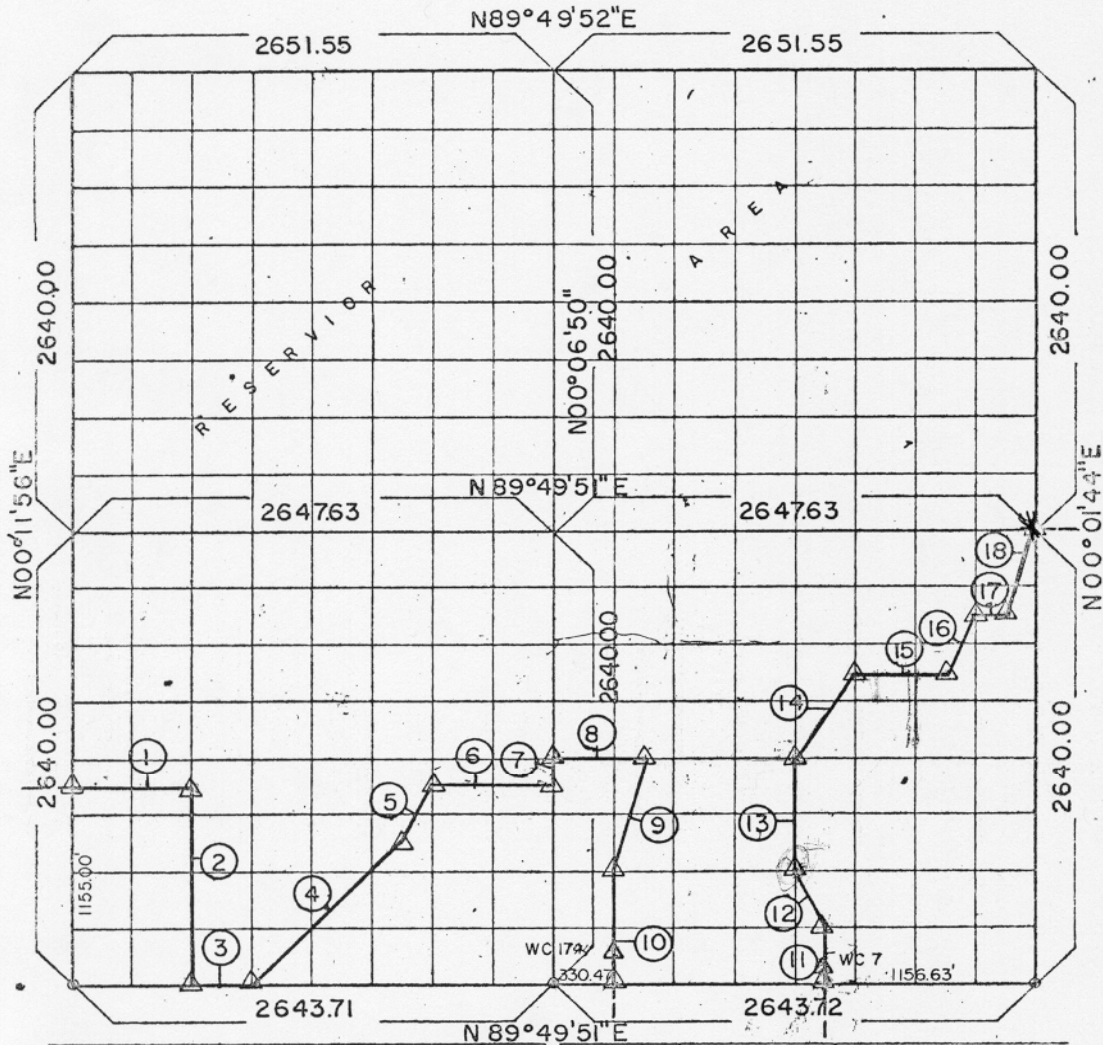


PARTIAL SURVEYS
EUFALA RESERVOIR

Performed Under Contract Number: DACW56-70-C-0103

SEC. 32 T-9-N R-16-E COUNTY PITTSBURG



Course N ^o	Distance	Bearing	Course N ^o	Distance	Bearing
1	661.42	N89°49'51\"E	11	330.00	N00°03'58\"W
2	1155.00	S00°10'29\"E	12	368.82	N26°41'33\"W
3	330.46	N89°49'51\"E	13	560.00	N00°04'17\"W
4	1167.84	N44°53'07\"E	14	595.85	N33°39'10\"E
5	369.18	N26°27'58\"E	15	496.20	N89°49'51\"E
6	661.36	N89°49'51\"E	16	369.47	N26°33'23\"E
7	165.00	N00°06'49\"W	17	165.42	N89°49'51\"E
8	496.06	N89°49'51\"E	18	522.30	N18°26'13\"E
9	680.59	S13°57'33\"W			
10	660.00	S00°06'16\"E			

Field Book N^o E-1117, Date 8 OCT 1970

CERTIFICATE OF SURVEY

I HEREBY CERTIFY THAT THE ABOVE PLAT IS A TRUE AND CORRECT REPRESENTATION OF THE SURVEY MADE IN SECTION 32, T-9-N, R-16-E, PITTSBURG COUNTY, OKLAHOMA

Maynard Fuller
REGISTERED PROFESSIONAL ENGINEER
AND
LAND SURVEYOR

FULLER ASSOCIATES
Consulting Professional Engineers

Under the Supervision of
U.S. ARMY ENGINEER DISTRICT, TULSA
CORPS OF ENGINEERS

SHEET 1 of 1

LEGEND

- Δ MONUMENT
- ORIGINAL CORNER
- IRON PIN

345