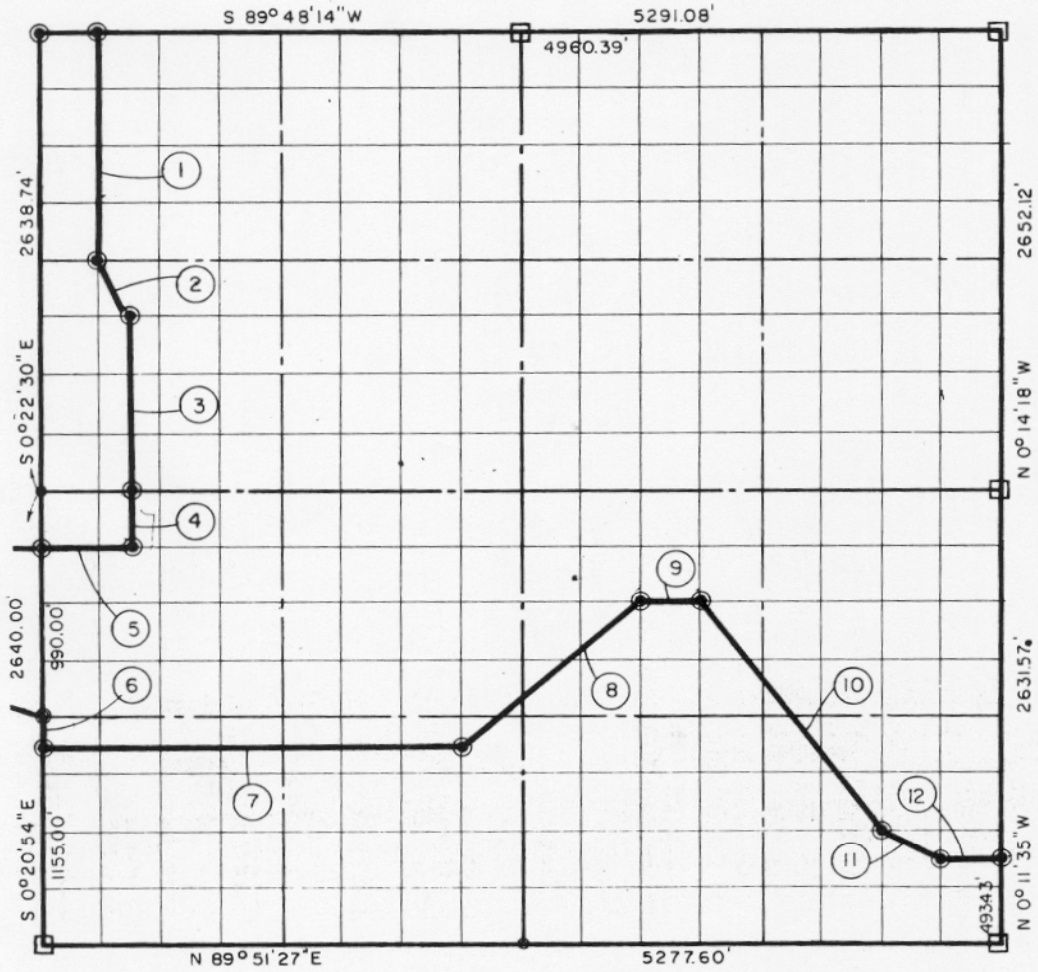


- ⊙ LAP IN CONCRETE
- STONE
- IRON PIN



COURSE NO.	DISTANCE	BEARING	COURSE NO.	DISTANCE	BEARING
①	1319.76'	S 0°21'51"E	⑩	1649.49'	S 37°08'00"E
②	369.66'	S 26°54'34"E	⑪	368.94'	S 63°38'18"E
③	990.00'	S 0°21'32"E	⑫	329.95	N 89°52'28"E
④	330.00'	S 0°20'02"E		<i>9,999.26</i>	
⑤	495.24'	S 89°56'14"W			
⑥	165.00'	S 0°20'54"E			
⑦	2310.00'	N 89°53'50"E			
⑧	1285.96'	N 50°05'14"E			
⑨	330.26'	N 89°55'33"E			

BOOK No. 961

348

John Carney, a Registered Professional Engineer, do hereby certify that the above plat is a true and accurate survey of Sec. 35, T9 N., R. 16 E. as made under my supervision.

9,999.26

John Carney
 JOHN CARNEY
 Reg. Prof. Engr. No. 137