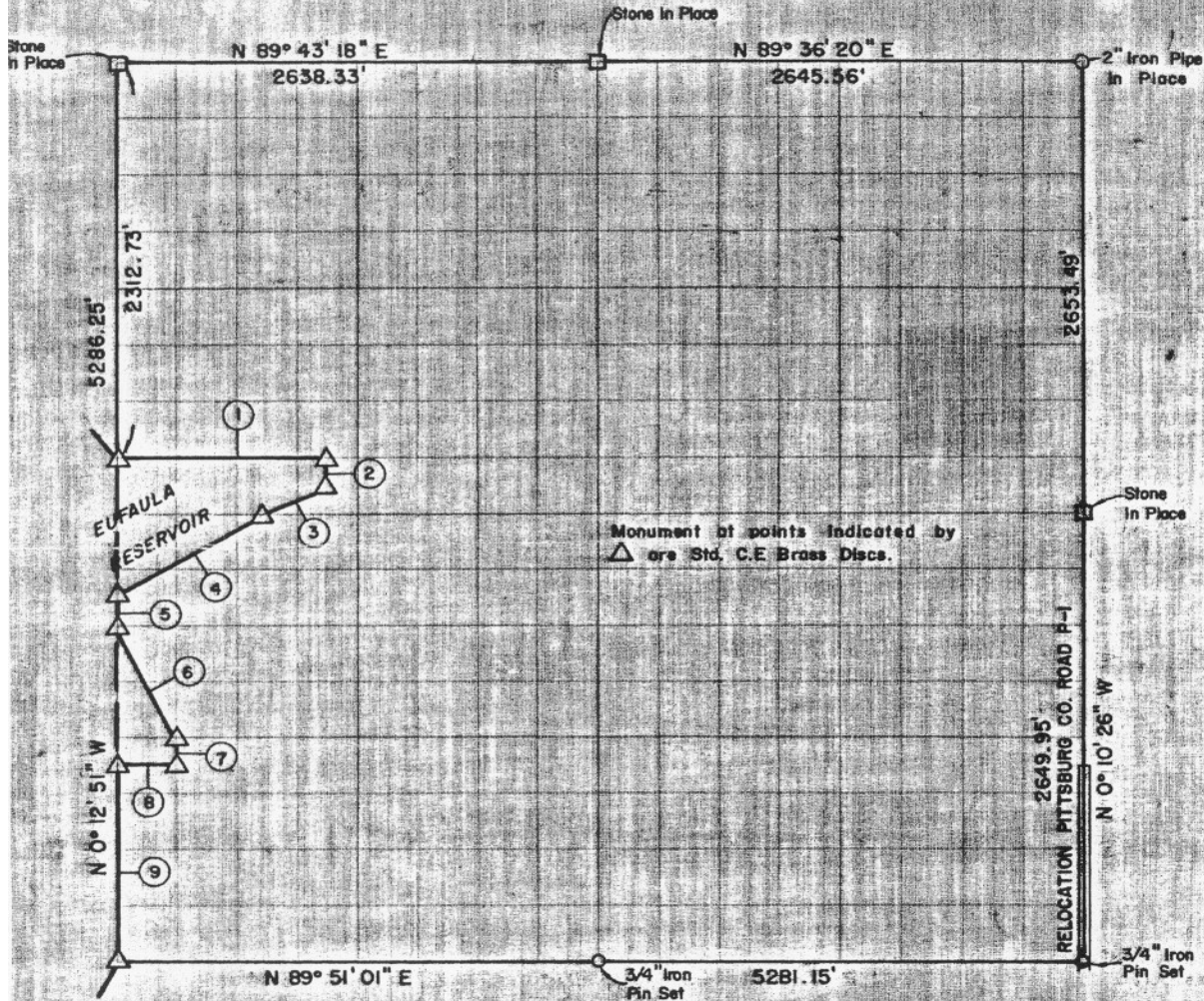


SEC. 10 , T 9 N, R 17 E, PITTSBURG COUNTY



Course No.	Distance	Bearing	Course No.	Distance	Bearing
1	1154.70'	N 89° 46' 18" E			
2	165.21'	S 00° 13' 30" E			
3	368.98'	S 63° 10' 37" W			
4	962.34'	S 58° 46' 47" W			
5	165.20'	S 00° 12' 51" E			
6	738.76'	S 25° 44' 51" E			
7	165.22'	S 00° 13' 02" E			
8	330.02'	S 89° 49' 05" E			
9	1156.37'	S 00° 12' 51" E			

Book No. E-1022

Date: September 1985

I, Herman E. Smith, a Registered Professional Engineer, do hereby certify that the above plat is a true and accurate survey of Sec. 10, T 9 N, R 17 E as made under my supervision.

279

Herman E. Smith
 HERMAN E. SMITH
 Reg. Prof. Engr. No. 1417