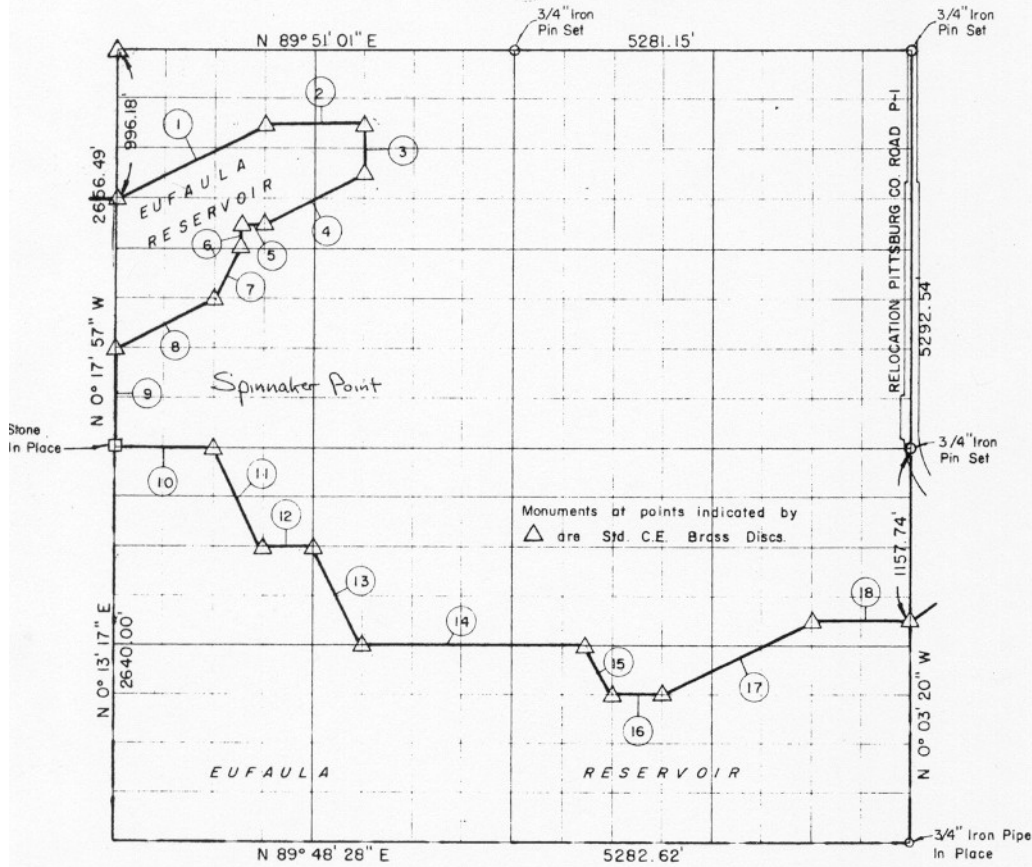


C. 15, T9 N, R17 E PITTSBURG COUNTY



Course No.	Distance	Bearing	Course No.	Distance	Bearing
1	1106.70'	N 63° 04' 54" E	17	1108.99'	N 63° 12' 47" E
2	659.60'	N 89° 49' 46" E	18	660.28'	N 89° 46' 10" E
3	331.66'	S 0° 08' 31" E			
4	737.94'	S 63° 05' 36" W			
5	164.72'	S 89° 48' 06" W			
6	165.93'	S 0° 13' 14" E			
7	370.42'	S 26° 09' 29" W			
8	736.91'	S 62° 59' 56" W			
9	664.14'	S 0° 17' 57" E			
10	657.23'	N 89° 44' 21" E			
11	735.59'	S 26° 24' 47" E			
12	329.00'	N 89° 45' 23" E			
13	736.36'	S 26° 29' 03" E			
14	1483.39'	N 89° 46' 25" E			
15	368.97'	S 26° 37' 32" E			
16	330.15'	N 89° 46' 56" E			

11,347.58

Book No. E-1021 Date: September, 1965

299

I, Herman E. Smith, a Registered Professional Engineer, do hereby certify that the above plat is a true and accurate survey of Sec. 15, T 9 N, R 17 E as made under my supervision.

Herman E. Smith
 HERMAN E. SMITH
 Reg. Prof. Engr. No. 1417