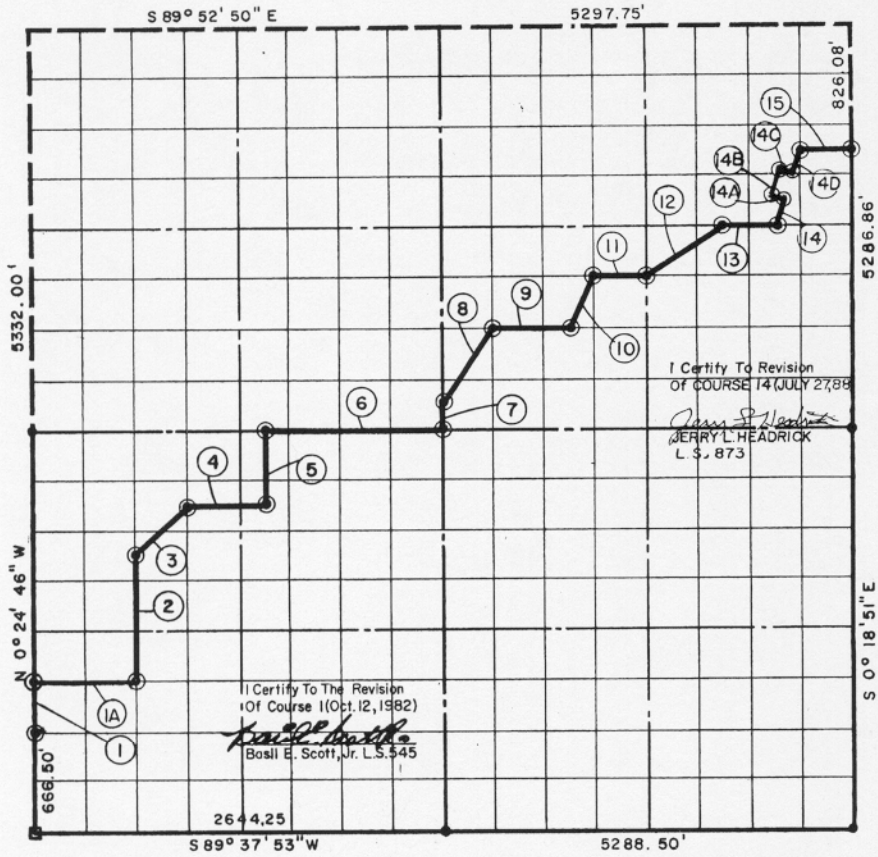


SECTION 19, T 9 N, R 17 E, PITTSBURG COUNTY

- ⊙ 3S CAP IN CONCRETE
- ORIGINAL STONE
- IRON PIN



COURSE NO.	DISTANCE	BEARING	COURSE NO.	DISTANCE	BEARING
①	333.25'	N 0° 24' 46" W	⑩	369.58'	N 26° 14' 54" E
②	832.23'	N 0° 24' 00" W	⑪	330.92'	N 89° 58' 00" E
③	468.33'	N 44° 31' 52" E	⑫	595.12'	N 56° 11' 27" E
④	496.14'	N 89° 49' 48" E	⑬	330.96'	N 89° 59' 50" E
⑤	498.80'	N 0° 23' 05" W	⑭	233.91'	N 18° 09' 55" E
⑥	1157.87'	N 89° 52' 33" E	⑮	331.01'	S 89° 57' 25" E
⑦	165.92'	N 0° 21' 48" W	14A	661.27'	N 89° 43' 26" E
⑧	596.26'	N 33° 20' 32" E	14B	60.00'	N-71°50'05"-W
⑨	496.34'	N 89° 56' 11" E	14C	180.00'	N-18°09'55"-E
			14D	60.00'	S-71°50'05"-E
				108.00'	N-18°09'05"-E

BOOK No. 957

I, John Carney, a Registered Professional Engineer, do hereby certify that the above plat is a true and accurate survey of Sec. 19, T. 9 N., R. 17 E. as made under my supervision.

312

JOHN CARNEY
 Reg. Prof. Engr. No. 137