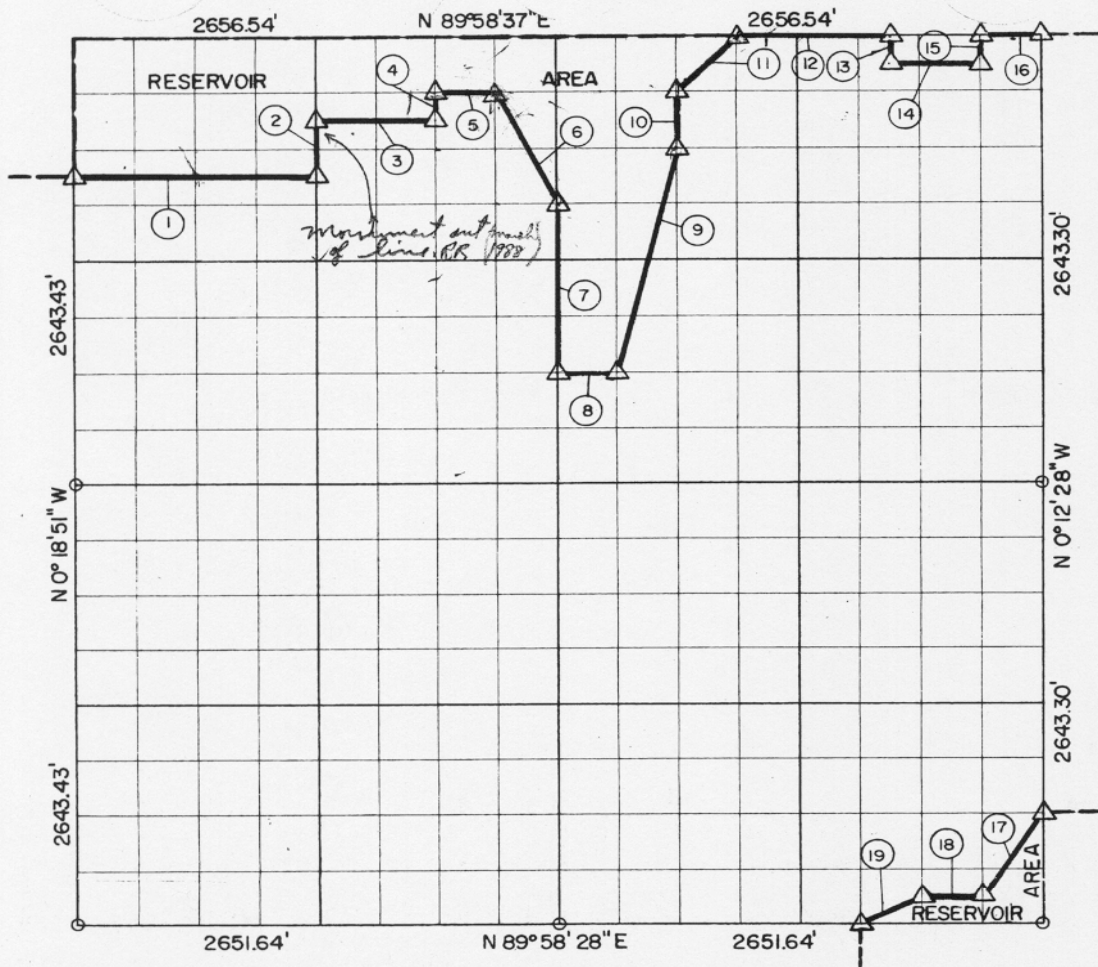


20, T9N, R17

PITTSBURGH
MONROE COUNTY



Course No.	Distance	Bearing	Course No.	Distance	Bearing
1	1320.00'	N 89°58'36" E			
2	330.43'	N 0°17'15" W			
3	660.00'	N 89°58'36" E			
4	165.21'	N 0°16'27" W			
5	343.98'	N 89°58'36" E			
6	740.80'	S 26°53'28" E			
7	991.62'	S 0°15'40" E			
8	331.84'	N 89°58'34" E			
9	1361.45'	N 13°51'34" E			
10	330.42'	N 0°14'52" W			
11	467.52'	N 45°00'25" E			
12	830.16'	N 89°58'37" E			
13	165.21'	S 0°13'28" E			
14	498.07'	N 89°58'37" E			
15	165.21'	N 0°12'52" W			
16	332.06'	N 89°58'37" E			
17	595.37'	S 33°37'21" W			
18	331.47'	S 89°58'29" W			
19	369.85'	S 63°26'30" W			

Book No. E-1017 ^{10,330.67} Date: August, 1965

313

I, James E. Curry, a Registered Professional Engineer, do hereby certify that the above plat is a true and accurate survey of Sec. 20, T9N, R17E as made under my supervision.

LEGEND

- 5/8" Rods w/Caps
- △ C. of E. Mon.
- Measured Line
- - - Calculated Line
- Orig. Cor Stone

James E. Curry
 JAMES E. CURRY
 Reg. Prof. Engr. No. 1872