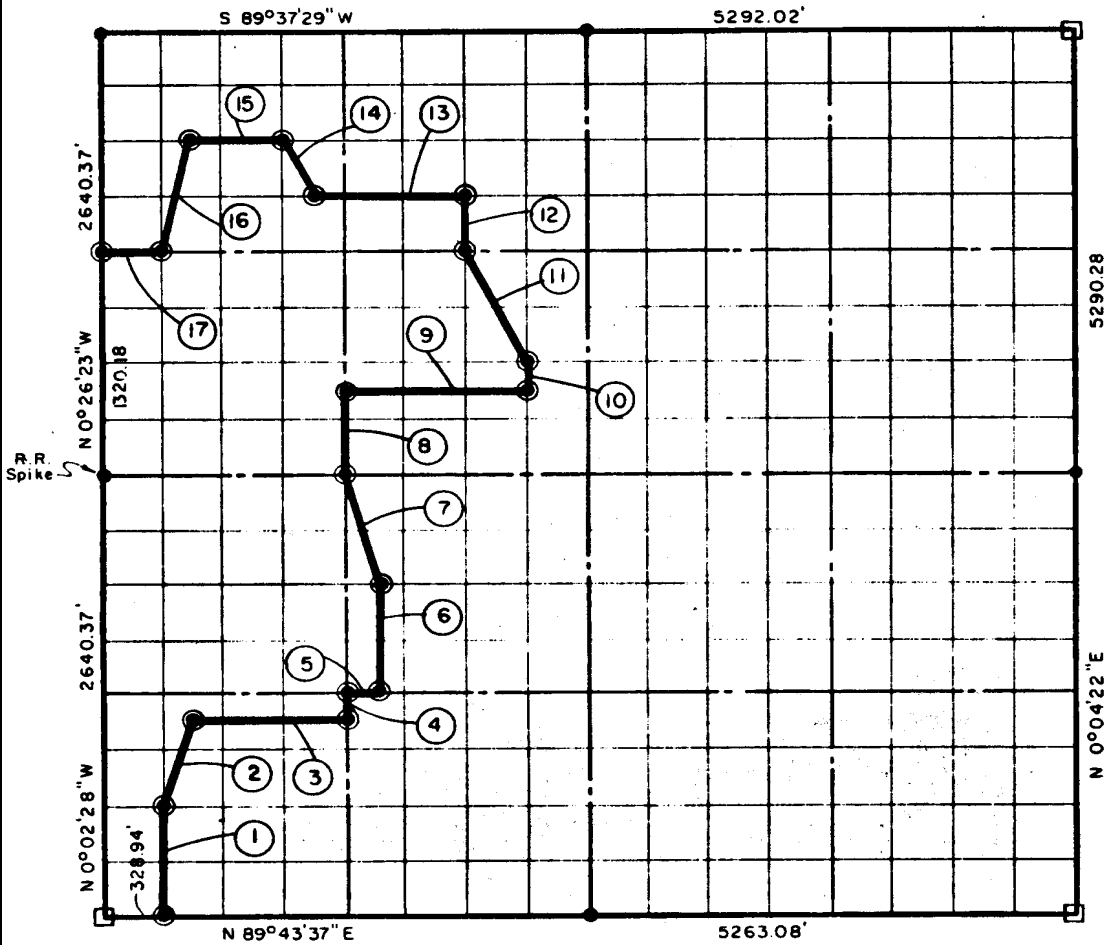


SECTION 23, T9N, R17E, PITTSBURG COUNTY.

- ⊙ 6" CAP IN CONCRETE
- ORIGINAL STONE
- IRON PIN



COURSE NO.	DISTANCE	BEARING	COURSE NO.	DISTANCE	BEARING
①	660.16'	N 0°03'16" W	⑩	165.15'	N 0°11'01" W
②	522.34'	N 18°16'58" E	⑪	737.21'	N 26°42'08" W
③	821.65'	N 89°42'17" E	⑫	330.26'	N 0°13'13" W
④	165.09'	N 0°05'39" W	⑬	823.43'	S 89°38'37" W
⑤	164.31'	N 89°42'05" E	⑭	368.85'	N 26°50'50" W
⑥	660.40'	N 0°06'03" W	⑮	494.37'	S 89°38'15" W
⑦	679.92'	N 14°04'24" W	⑯	680.30'	S 13°36'57" W
⑧	495.39'	N 0°17'36" W	⑰	329.16'	S 89°38'59" W
⑨	985.89'	N 89°39'57" E			

BOOK No. 965

316

I, John Carney, a Registered Professional Engineer, do hereby certify that the above plat is a true and accurate survey of Sec. 23, T 9 N., R 17 E. as made under my supervision.

John Carney
 JOHN CARNEY
 Reg. Prof. Engr. No. 137