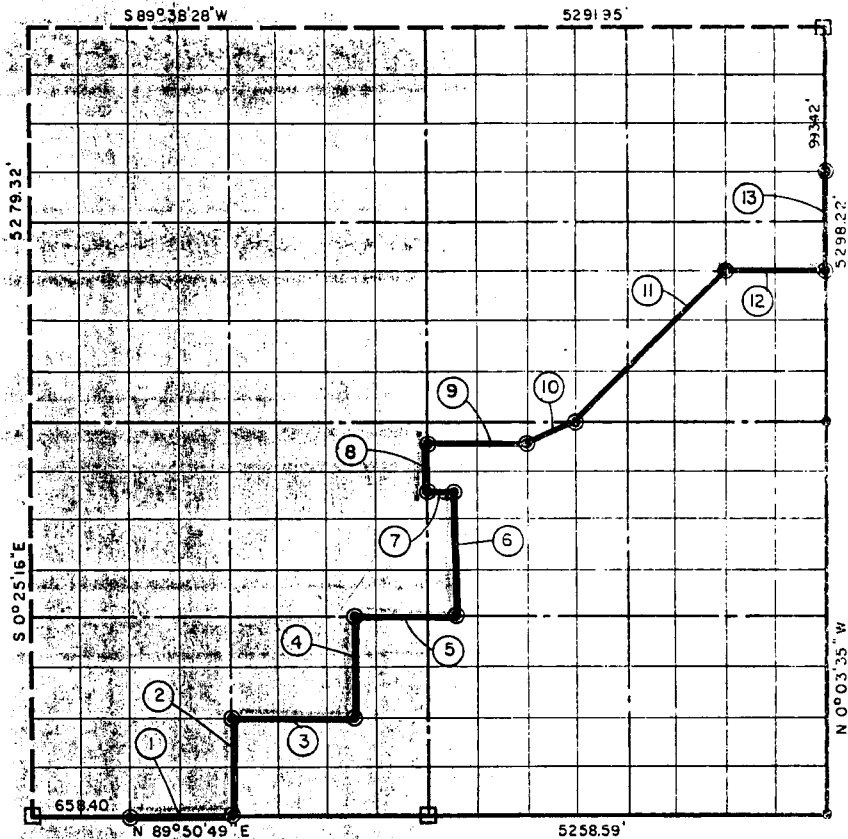


- ⊙ BRASS CAP IN CONCRETE
- ORIGINAL STONE
- IRON PIPE



COURSE NO.	DISTANCE	BEARING	COURSE NO.	DISTANCE	BEARING
(1)	658.40	N 89° 50' 49" E	(10)	368.66'	N 63° 05' 52" E
(2)	660.50	N 0° 21' 14" W	(11)	1402.61'	N 44° 41' 00" E
(3)	823.48	N 89° 49' 18" E	(12)	659.86'	N 0° 42' 19" E
(4)	660.88	N 0° 18' 44" W	(13)	662.28	N 0° 03' 35" W
(5)	658.76	N 89° 47' 45" E			
(6)	826.45	N 0° 16' 21" W			
(7)	164.60	S 89° 45' 48" W			
(8)	330.54	N 0° 17' 14" W			
(9)	658.70	N 89° 45' 02" E			

BOOK No. 967

— SHOWN ON SEGM. I
 BY R DATE 1-4-78

27, 9N, 17E

I, John Carney, a Registered Professional Engineer, do hereby certify that the above plat is a true and accurate survey of Sec. 27, T. 9 N., R. 17 E. as made under my supervision.