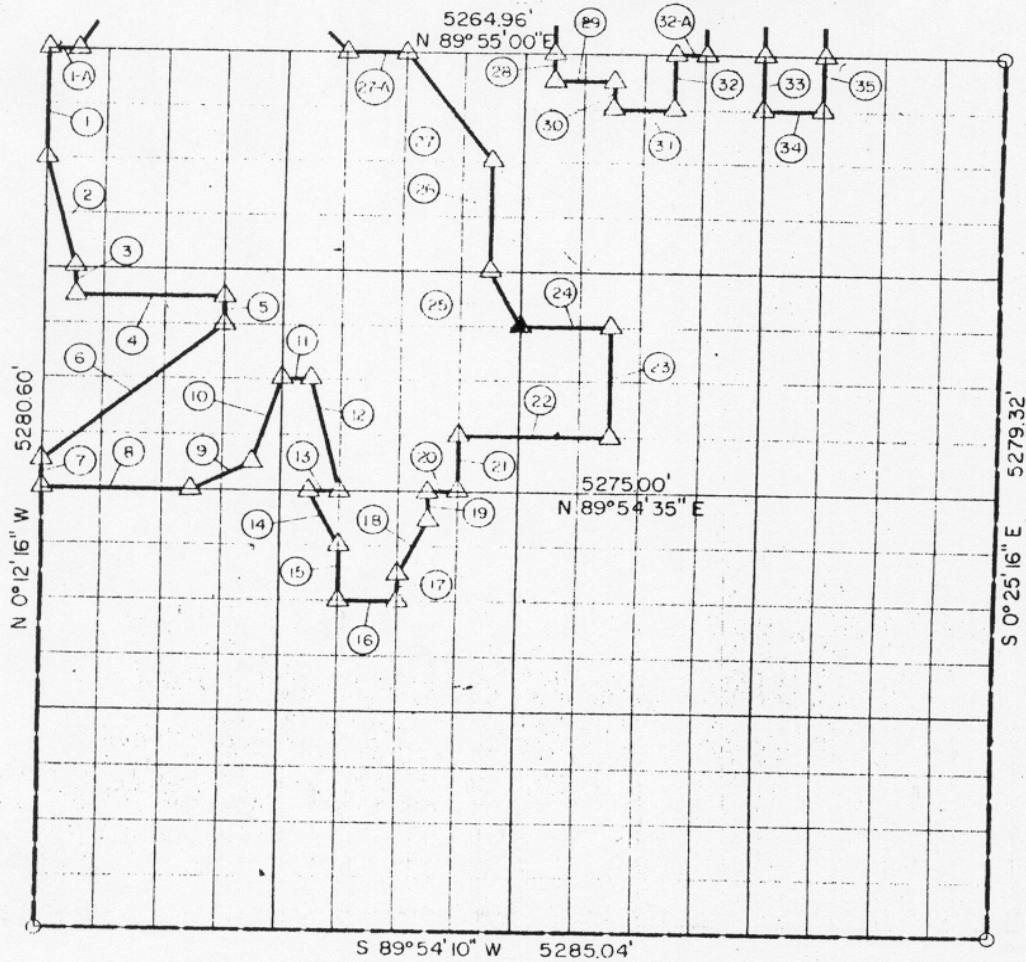


Sec. 28, T 9 N, R 17 E Pittsburg COUNTY, ✓



Course No.	Distance	Bearing	Course No.	Distance	Bearing
1-A	164.53'	N 89° 55' 00" E	19	165.01'	N 0° 17' 34" W
1	660.08'	S 0° 12' 16" E	20	164.84'	N 89° 54' 35" E
2	680.64'	S 14° 12' 26" E	21	330.00'	N 0° 17' 58" W
3	165.02'	S 0° 12' 37" E	22	824.03'	N 89° 54' 38" E
4	823.53'	N 89° 54' 46" E	23	659.93'	N 0° 19' 59" W
5	165.02'	S 0° 14' 42" E	24	494.18'	S 89° 54' 44" W
6	1286.19'	S 50° 00' 32" W	25	369.40'	N 26° 47' 21" W
7	165.02'	S 0° 12' 16" E	26	660.00'	N 0° 18' 22" W
8	824.20'	N 89° 54' 35" E	27	825.70'	N 37° 01' 03" W
9	368.26'	N 63° 17' 20" E	27-A	329.06'	S 89° 55' 00" W
10	521.28'	N 18° 10' 26" E	28	164.99'	S 0° 19' 10" E
11	164.77'	N 89° 54' 41" E	29	329.10'	N 89° 54' 58" E
12	680.80'	S 14° 16' 43" E	30	164.98'	S 0° 19' 59" E
13	164.84'	S 89° 54' 35" W	31	329.14'	N 89° 54' 57" E
14	369.37'	S 26° 46' 38" E	32	329.93'	N 0° 20' 48" W
15	330.02'	S 0° 16' 20" E	32-A	164.53'	N 89° 55' 00" E
16	329.84'	N 89° 54' 29" E	33	329.94'	S 0° 22' 01" E
17	165.01'	N 0° 17' 09" W	34	329.14'	N 89° 54' 57" E
18	368.39'	N 26° 17' 53" E	35	329.95'	N 0° 22' 50" W

Book No. E-920

Date: July, 1964

15 680.66 331

I, James E. Curry, a Registered Professional Engineer, do hereby certify that the above plot is a true and accurate survey of Sec. 28, T 9 N, R 17 E as made under my supervision.

15 688

James E. Curry
 JAMES E. CURRY
 Reg. Prof. Eng'r. No. 1872

