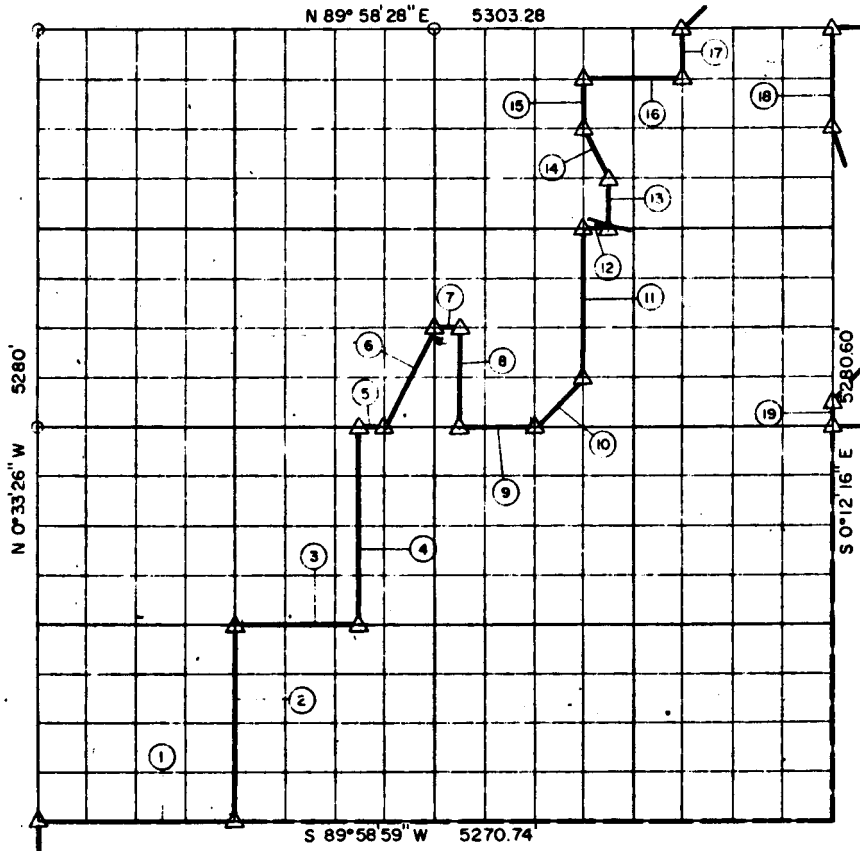


Sec. 29, T 9 N, R 17 E ~~Pittman~~ COUNTY



Course No.	Distance	Bearing	Course No.	Distance	Bearing
1	1317.69'	N 89° 58' 59" E			
2	1320.04'	N 0° 28' 09" W			
3	824.82'	N 89° 58' 52" E			
4	1320.07'	N 0° 24' 51" W			
5	165.22'	N 89° 58' 44" E			
6	736.28'	N 26° 17' 09" E			
7	165.35'	N 89° 58' 40" E			
8	660.04'	S 0° 22' 11" E			
9	495.66'	N 89° 58' 44" E			
10	465.83'	N 44° 52' 04" E			
11	990.09'	N 0° 18' 53" W			
12	165.47'	N 89° 58' 36" E			
13	330.03'	N 0° 18' 13" W			
14	369.97'	N 26° 53' 30" W			
15	330.03'	N 0° 18' 53" W			
16	662.64'	N 89° 58' 31" E			
17	330.03'	N 0° 16' 14" W			
18	660.08'	S 0° 12' 16" E			
19	165.02'	S 0° 12' 16" E			

Book No. E-919 Date: July, 1964

11,474.36

330

I, James E. Curry, a Registered Professional Engineer, do hereby certify that the above plat is a true and accurate survey of Sec. 29, T 9 N, R 17 E as made under my supervision.

11,474.36

James E. Curry
 JAMES E. CURRY
 Reg. Prof. Eng'r No. 1872