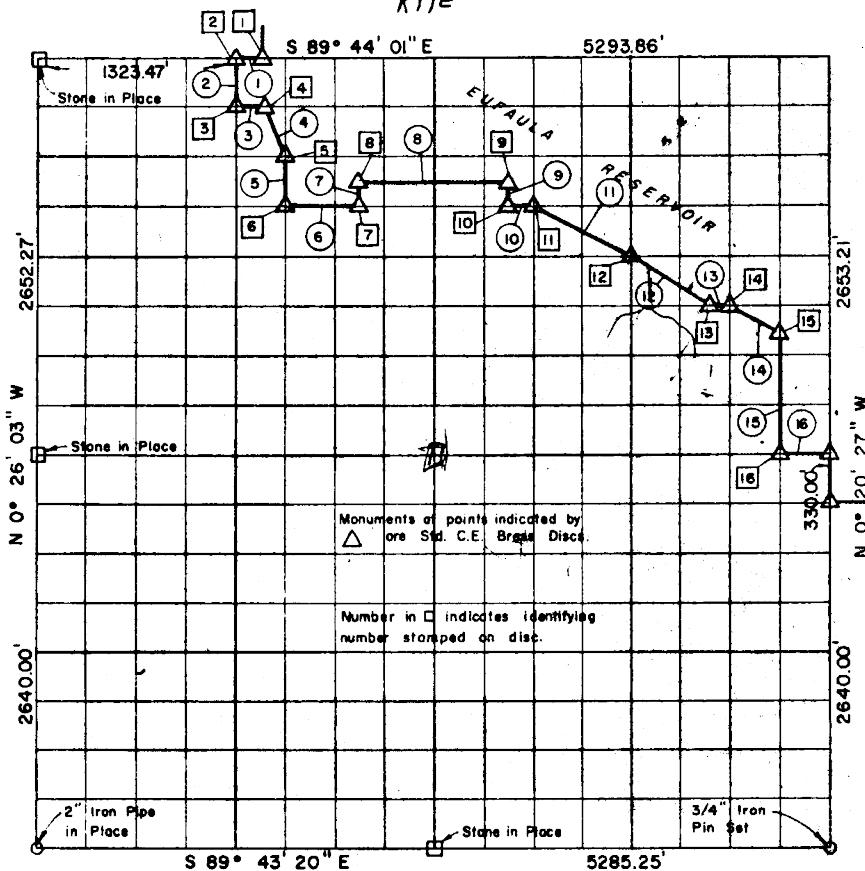


SEC. 2, T9N, R17E, PITTSBURG COUN.



Course No.	Distance	Bearing	Course No.	Distance	Bearing
1	165.43'	S 89° 44' 01" E			
2	334.46'	S 0° 24' 39" E			
3	165.42'	S 89° 36' 26" E			
4	372.13'	S 26° 47' 45" E			
5	331.05'	S 0° 24' 18" E			
6	496.16'	S 89° 38' 25" E			
7	165.45'	N 0° 23' 46" W			
8	992.36'	S 89° 37' 55" E			
9	165.31'	S 0° 22' 44" E			
10	165.38'	S 89° 38' 25" E			
11	743.18'	S 63° 14' 54" E			
12	599.30'	S 56° 13' 19" E			
13	165.35'	S 89° 40' 24" E			
14	371.33'	S 63° 17' 02" E			
15	825.27'	S 0° 20' 48" E			
16	330.59'	S 89° 43' 22" E			

Book No. E-1001

Date: January, 1965

6388.17

263

I, Herman E. Smith, a Registered Professional Engineer, do hereby certify that the above plat is a true and accurate survey of Sec. 2, T9N, R17E as made under my supervision.

6388.17

Herman E. Smith
HERMAN E. SMITH
Reg. Prof. Engr. No. 1417