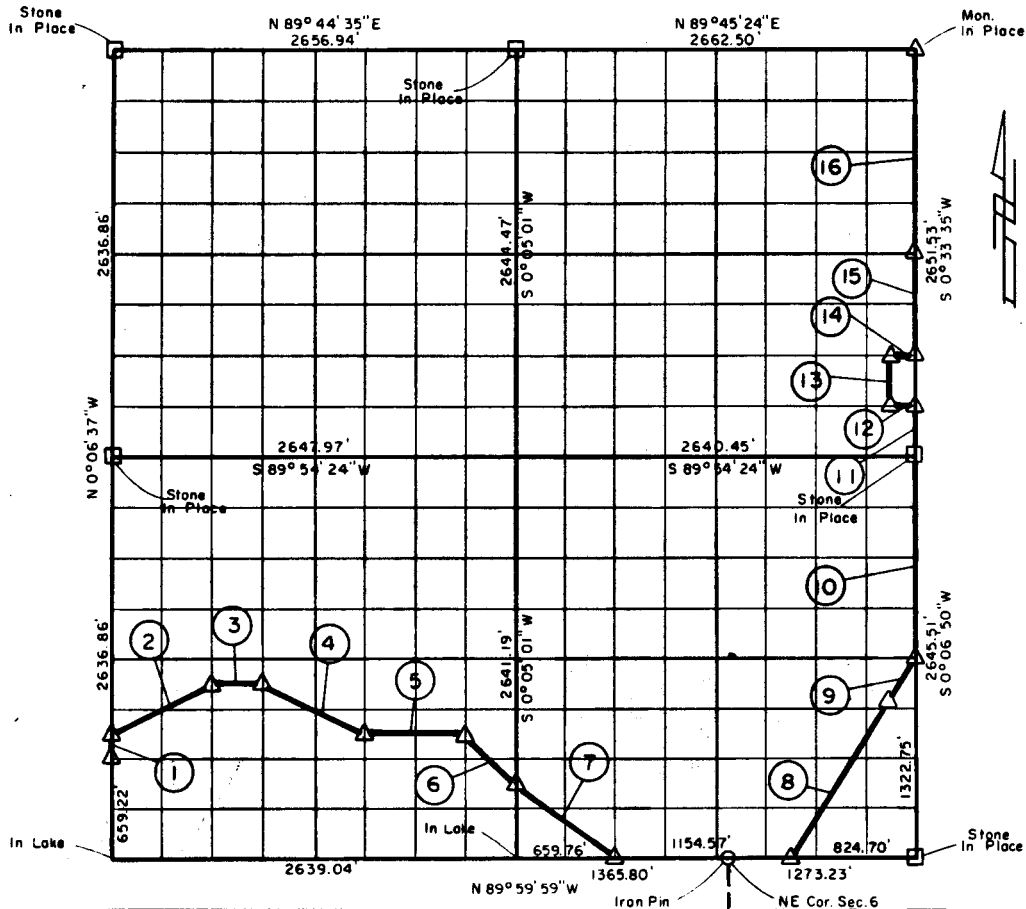


**PARTIAL BOUNDARY SURVEYS  
EUFULA LAKE, AREA "F"  
CANADIAN RIVER, OKLAHOMA**

Performed Under Contract Number DACW 56-77-C-0256

SEC. 31, T. 9N., R. 17E., COUNTY PITTSBURG



Course No.	Distance	Bearing	Course No.	Distance	Bearing
1	164.80'	N 0° 06' 37" W	14	165.37'	N 89° 52' 09" E
2	738.04'	N 63° 26' 00" E	15	662.88'	N 0° 33' 35" E
3	330.37'	N 89° 57' 33" E	16	1325.77'	N 0° 33' 35" E
4	738.28'	S 63° 29' 41" E			
5	660.46'	N 89° 58' 16" E			
6	466.50'	S 44° 58' 48" E			
7	824.36'	S 53° 04' 40" E			
8	1229.34'	N 32° 01' 28" E			
9	330.81'	N 32° 01' 28" E			
10	1322.76'	N 0° 06' 50" E			
11	331.44'	N 0° 33' 35" E			
12	165.20'	S 89° 53' 17" W			
13	331.39'	N 0° 31' 47" E			

Field Book No. E-1347 Date May, 1978

CERTIFICATE OF SURVEY

I Herby Certify That The Above Plot Is A True and Correct Representation of The Survey Made in Sec. 31, T. 9 N., R. 17 E.

*Jimmie Dale Nickle*  
Jimmie Dale Nickle  
Registered Land Surveyor No. 78

**CRAIG & KEITHLINE**  
Consulting Engineers

For

U.S. ARMY ENGINEER DISTRICT, TULSA  
CORPS OF ENGINEERS

SHEET 1 of 1

350  
 Δ MONUMENT  
 □ ORIGINAL CORNER  
 ○ IRON PIN

EUFAULA LAKE  
OKLAHOMA

SECTION AND QUARTER SECTION CORNER  
REFERENCES FOR

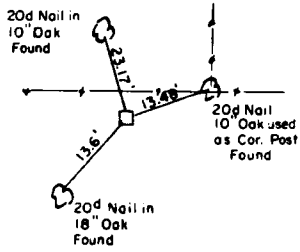
SEC. 31, T. 9 N., R. 17 E.

COUNTY - PITTSBURGH

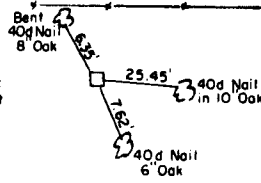
N.W. CORNER

NORTH 1/4 COR.

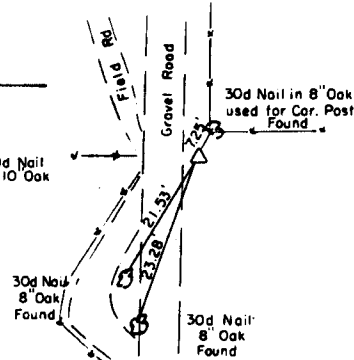
N.E. CORNER



STONE



STONE

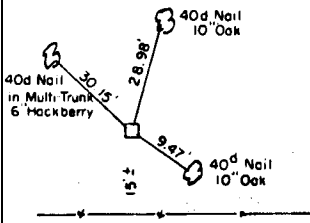


C of E MONUMENT

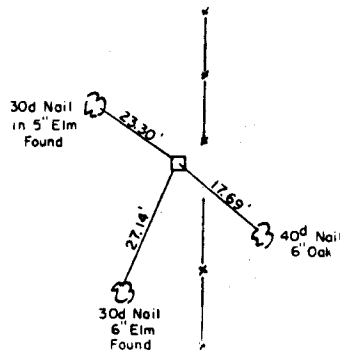
WEST 1/4 COR.

CENTER SEC.

EAST 1/4 COR.



STONE



STONE

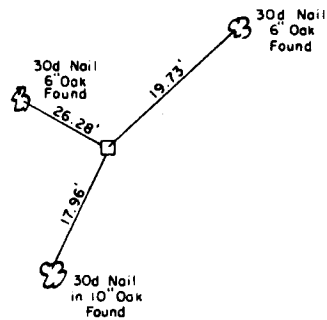
S.W. CORNER

SOUTH 1/4 COR.

S.E. CORNER

IN LAKE

IN LAKE



STONE

350