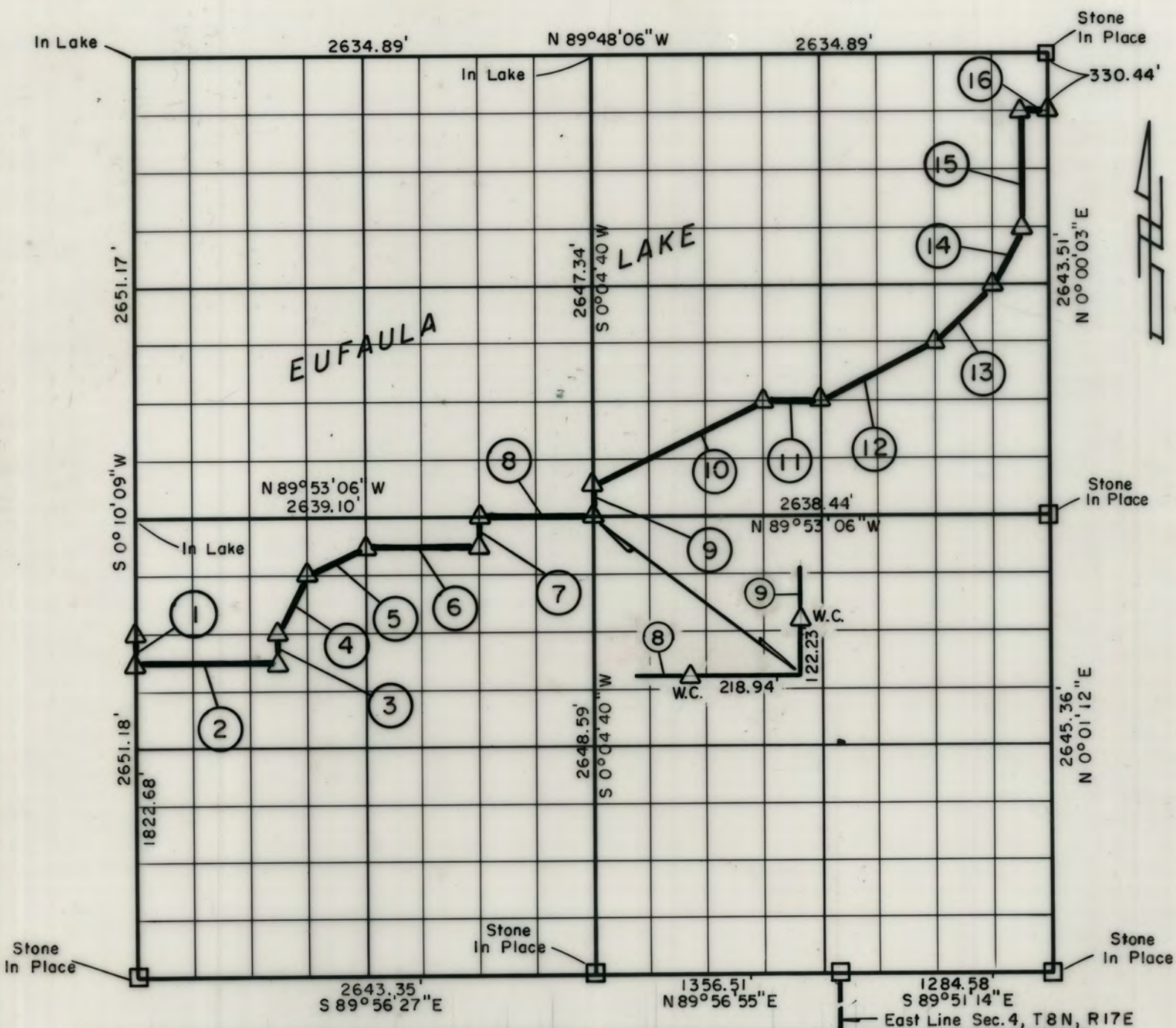


**PARTIAL BOUNDARY SURVEYS  
EUFAULA LAKE, AREA "F"  
CANADIAN RIVER, OKLAHOMA**

Performed Under Contract Number DACW 56-77-C-0256

SEC. 33 , T. 9 N. , R. 17 E. , COUNTY PITTSBURG

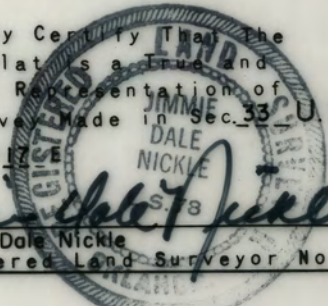


Course No.	Distance	Bearing	Course No.	Distance	Bearing
1	166.51'	S 0° 10' 09" W	14	368.89'	N 26° 32' 19" E
2	825.13'	S 89° 54' 08" E	15	660.94'	N 0° 00' 20" E
3	165.65'	N 0° 08' 26" E	16	164.71'	S 89° 48' 43" E
4	370.19'	N 26° 36' 21" E			
5	369.23'	N 63° 27' 23" E			
6	659.84'	S 89° 53' 18" E			
7	165.58'	N 0° 06' 02" E			
8	659.78'	S 89° 53' 06" E			
9	165.46'	N 0° 04' 40" E			
10	1106.20'	N 63° 28' 25" E			
11	329.69'	S 89° 51' 51" E			
12	737.02'	N 63° 29' 15" E			
13	466.24'	N 45° 00' 12" E			

Field Book No. E-1348 Date May, 1978

CERTIFICATE OF SURVEY

I Hereby Certify That the Above Plat is a True and Correct Representation of The Survey Made in Sec. 33, T. 9 N., R. 17 E.,



**CRAIG & KEITHLINE**  
Consulting Engineers

For  
**U.S. ARMY ENGINEER DISTRICT, TULSA**  
**CORPS OF ENGINEERS**

Δ MONUMENT  
□ ORIGINAL CORNER  
○ IRON PIN

SHEET 1 of 1

Jimmie Dale Nickle  
Registered Land Surveyor No. 78

# EUFAULA LAKE OKLAHOMA

SECTION AND QUARTER SECTION CORNER.  
REFERENCES FOR

SEC. 33, T 9 N, R 17 E

COUNTY - PITTSBURGH

N.W. CORNER

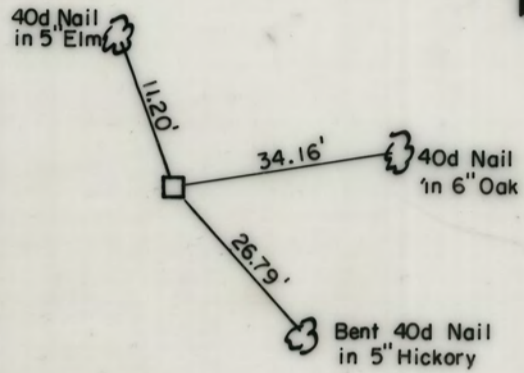
NORTH 1/4 COR.

N.E. CORNER



IN LAKE

IN LAKE



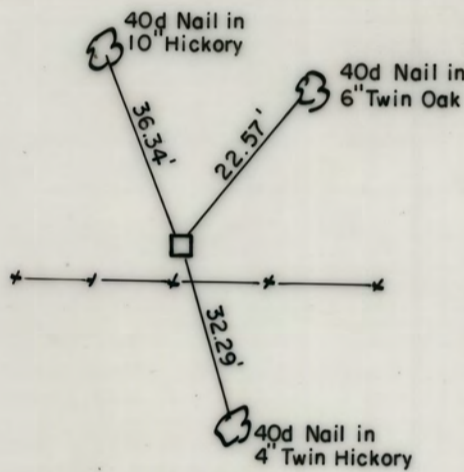
STONE

WEST 1/4 COR.

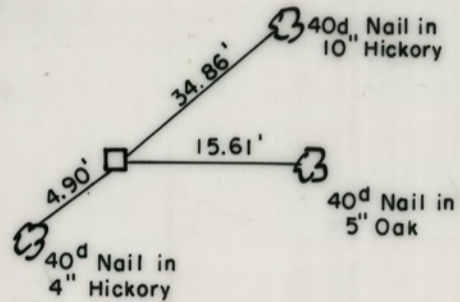
CLOSING COR.

EAST 1/4 COR.

IN LAKE



STONE

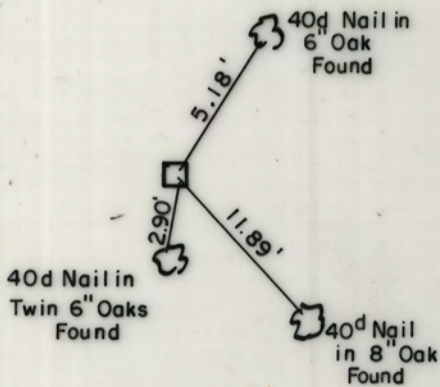


STONE

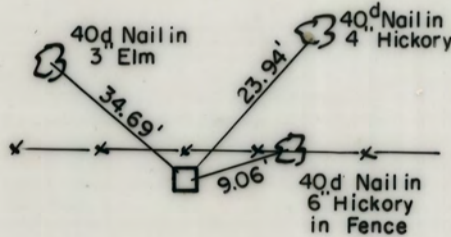
S.W. CORNER

SOUTH 1/4 COR.

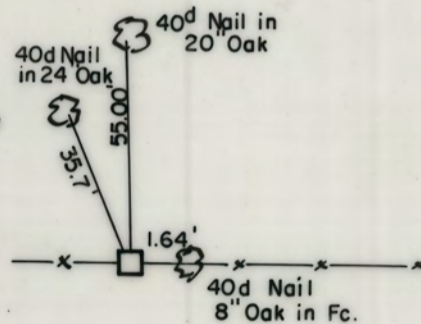
S.E. CORNER



STONE



STONE



STONE