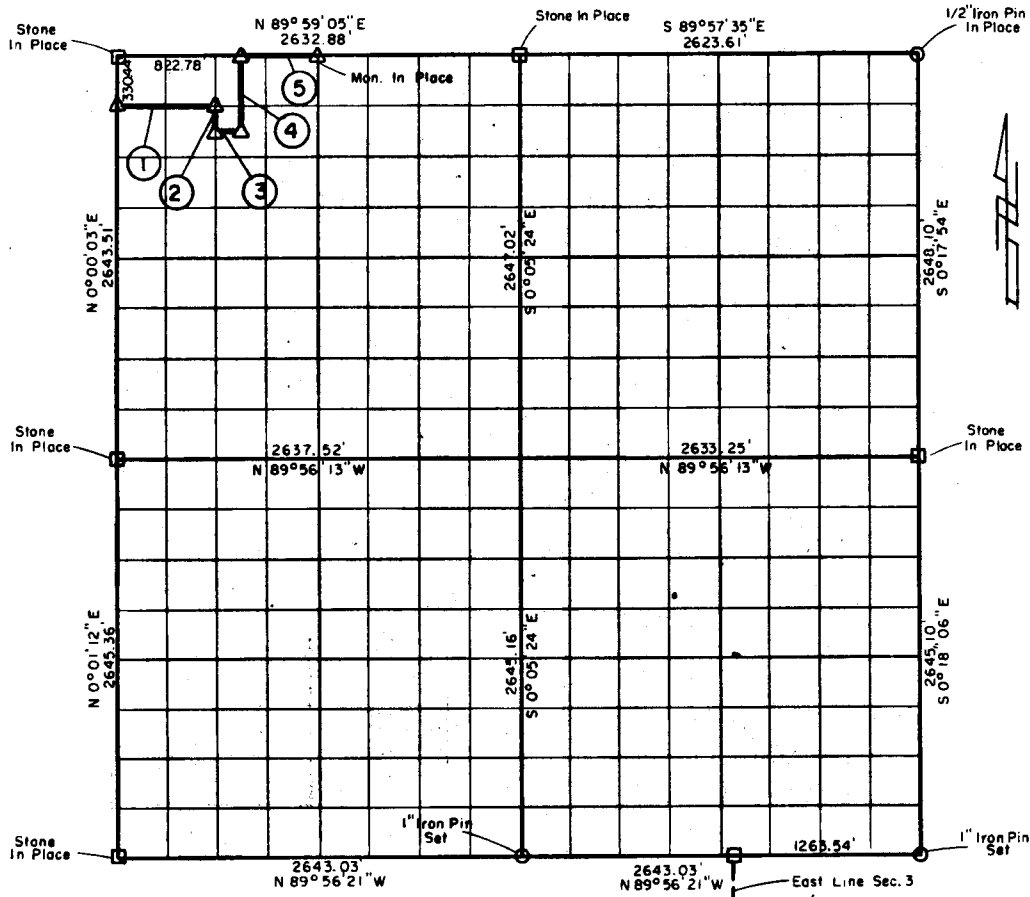


PARTIAL BOUNDARY SURVEYS  
 EUFAULA LAKE, AREA "F"  
 CANADIAN RIVER, OKLAHOMA

Performed Under Contract Number DACW 56-77-C-0256

SEC. 34, T. 9 N., R. 17 E., COUNTY PITTSBURG



Course No.	Distance	Bearing	Course No.	Distance	Bearing
1	658.36'	N 89° 59' 40" E			
2	165.27'	S 0° 01' 21" E			
3	164.61'	N 89° 59' 58" E			
4	495.86'	N 0° 01' 39" W			
5	493.66'	N 89° 59' 05" E			

Field Book No. E-1349 Date May, 1978

CERTIFICATE OF SURVEY  
 I hereby certify that the above plat is a true and correct representation of the survey made in Sec. 34, U.S. ARMY ENGINEER DISTRICT, TULSA CORPS OF ENGINEERS  
 CRAIG & KEITHLINE Consulting Engineers  
 For  
 U.S. ARMY ENGINEER DISTRICT, TULSA CORPS OF ENGINEERS  
 SHEET 1 of 1  
 Jimmie Dale Nickle Registered Land Surveyor No. 78  
 MONUMENT  
 ORIGINAL CORNER  
 IRON PIN  
 353

EUFAL A LAKE  
OKLAHOMA

SECTION AND QUARTER SECTION CORNER  
REFERENCES FOR

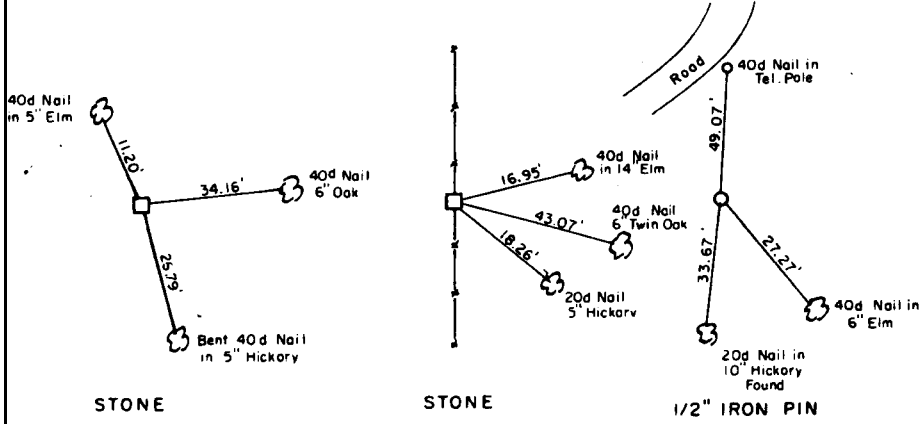
SEC. 34, T9N, R17E

COUNTY- PITTSBURGH

N.W. CORNER

NORTH 1/4 COR.

N.E. CORNER



STONE

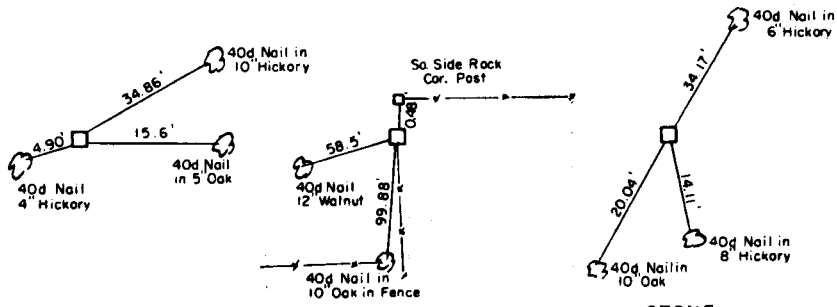
STONE

1/2" IRON PIN

WEST 1/4 COR.

CLOSING COR.

EAST 1/4 COR.



STONE

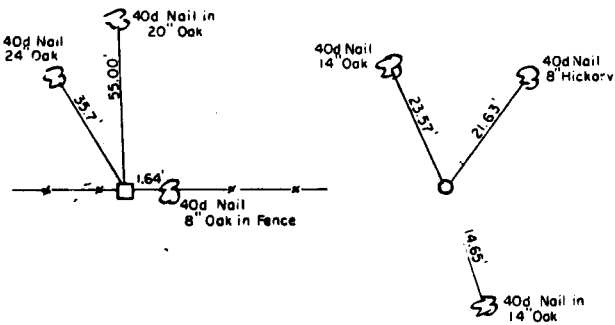
STONE

STONE

S.W. CORNER

SOUTH 1/4 COR.

S.E. CORNER



STONE

1" IRON PIN

1" IRON PIN  
(GUARDED BY CEDAR  
FENCE POST)

NO REFERENCES  
AVAILABLE

