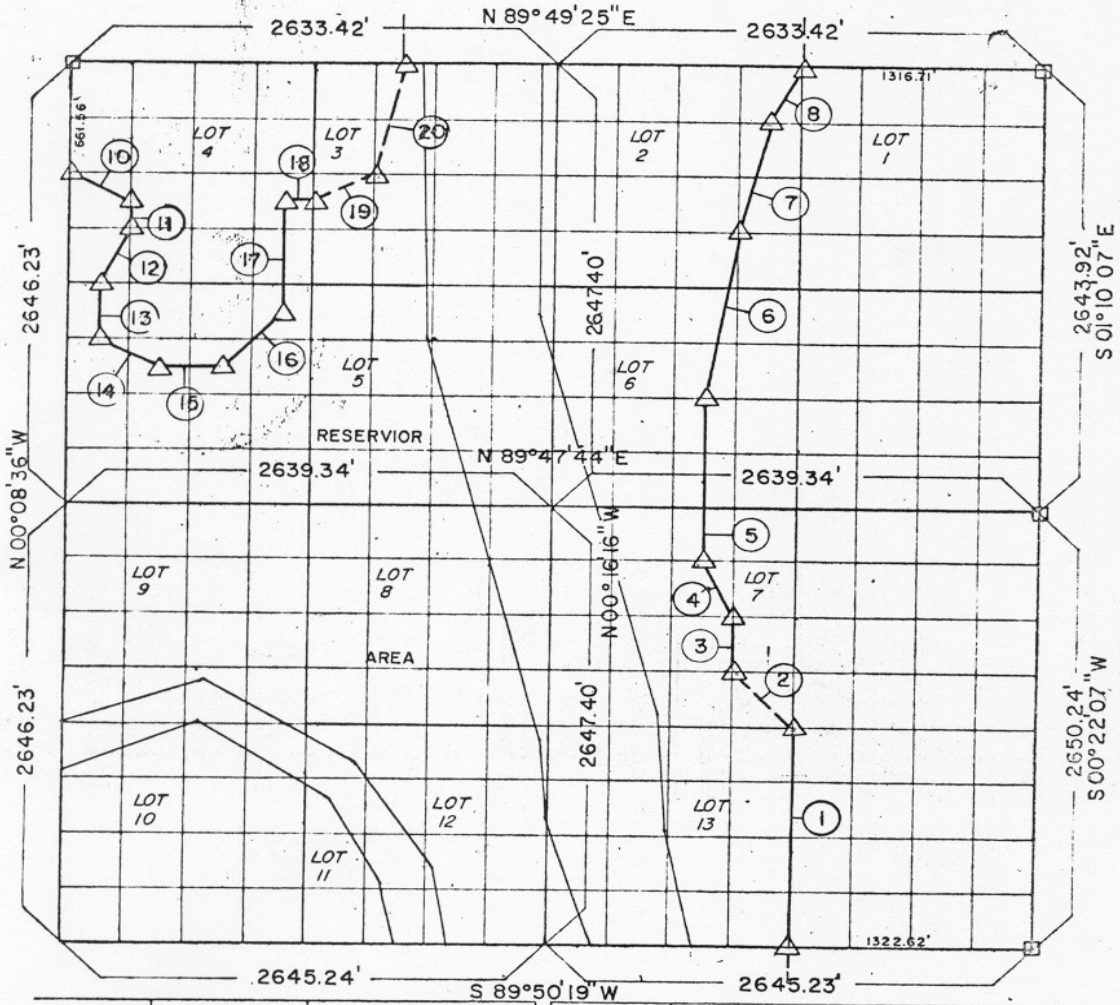


PARTIAL SURVEYS
RESERVOIR

Performed Under Contract Number DACW56-70-C-0103

SEC. 4 T-9-N R-17-E COUNTY PITTSBURG & MCINTOSH



Course N ^o	Distance	Bearing	Course N ^o	Distance	Bearing
1	1324.33'	N 00° 02' 56\" E	10	368.51'	S 63° 30' 43\" E
2	468.62'	N 45° 13' 41\" W	11	165.38'	S 00° 09' 33\" E
3	331.06'	N 00° 01' 52\" W	12	369.60'	S 26° 19' 00\" W
4	370.29'	N 26° 49' 43\" W	13	330.77'	S 00° 09' 04\" E
5	992.29'	N 00° 07' 31\" W	14	368.76'	S 63° 32' 13\" E
6	680.11'	N 13° 19' 12\" E	15	329.69'	N 89° 48' 58\" E
7	1004.03'	N 08° 44' 19\" E	16	466.95'	N 44° 42' 51\" E
8	368.03'	N 25° 55' 00\" E	17	661.46'	N 00° 11' 58\" W
			18	163.72'	N 89° 49' 15\" E
			19	369.35'	N 63° 13' 18\" E
			20	681.81'	N 13° 51' 12\" E

CERTIFICATE OF SURVEY

I HEREBY CERTIFY THAT THE ABOVE PLAT IS A TRUE AND CORRECT REPRESENTATION OF THE SURVEY MADE IN SECTION 4, T-9-N, R-17-E, PITTSBURG & MCINTOSH COUNTY, OKLAHOMA

Fuller Associates
CONSULTING PROFESSIONAL ENGINEERS

Field Book N^o E-1122, Date OCT 1970

FULLER ASSOCIATES
Consulting Professional Engineers

Under the Supervision of
U.S. ARMY ENGINEER DISTRICT, TULSA
CORPS OF ENGINEERS

SHEET 1 of 1

9,814.76
LEGEND

- ▲ MONUMENT
- ORIGINAL CORNER
- IRON PIN

262