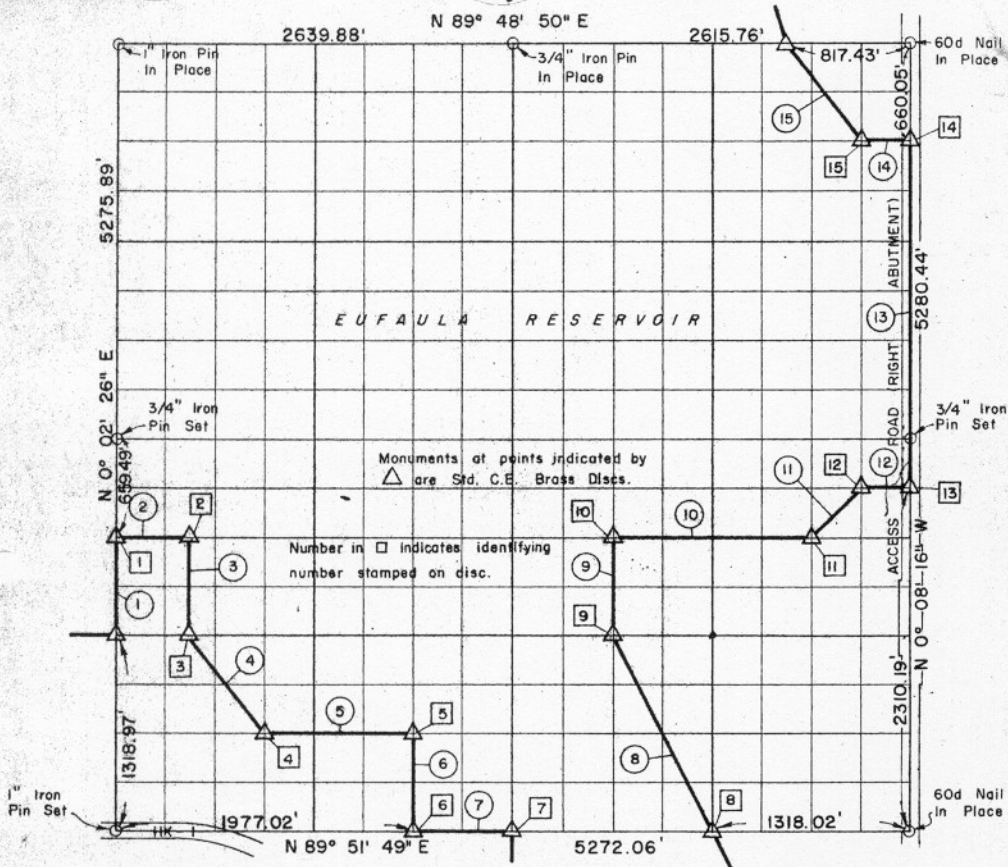


EC. 10 , T 9 N, R 18 E HASKELL COUN



Course No.	Distance	Bearing	Course No.	Distance	Bearing
1	659.48'	N 0° 02' 26" E			
2	494.53'	N 89° 50' 42" E			
3	659.54'	S 0° 02' 54" W			
4	822.92'	S 36° 52' 24" E			
5	988.70'	N 89° 51' 27" E			
6	659.70'	S 0° 04' 19" W			
7	659.01'	N 89° 51' 49" E			
8	1473.42'	N 26° 32' 34" W			
9	659.84'	N 0° 01' 38" E			
10	1314.22'	N 89° 50' 42" E			
11	465.86'	N 44° 44' 25" E			
12	328.40'	N 89° 50' 28" E			
13	2310.19'	N 0° 08' 16" W			
14	327.29'	S 89° 49' 12" W			
15	821.79'	N 36° 45' 21" W			
	12649.89'				

Book No. E-995

Date: January, 1965

282

I, Herman E. Smith, a Registered Professional Engineer, do hereby certify that the above plat is a true and accurate survey of Sec. 10, T 9 N, R 18 E as made under my supervision.

12,645

Herman E. Smith
HERMAN E. SMITH
Reg. Prof. Engr. No. 1417