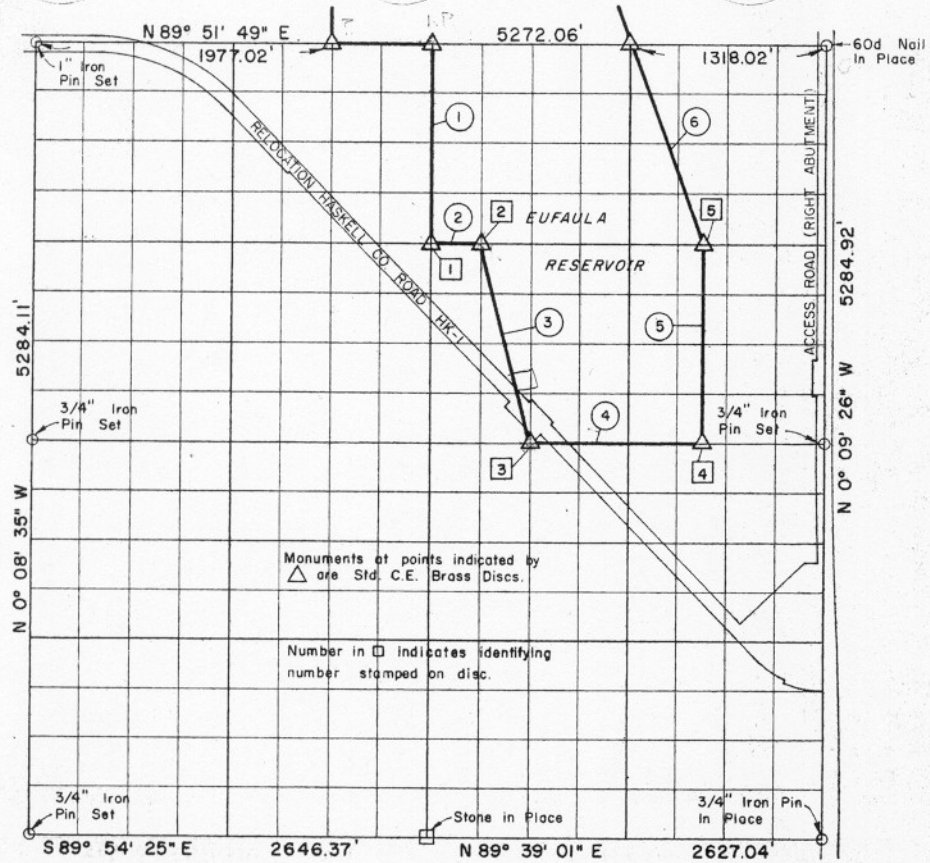


SEC. 15 , T 9 N, R 18 E , HASKELL COU



Course No.	Distance	Bearing	Course No.	Distance	Bearing
1	1321.13'	S 0° 15' 17" E			
2	329.22'	N 89° 51' 57" E			
3	1362.09'	S 14° 13' 04" E			
4	1150.05'	S 89° 52' 05" E			
5	1321.21'	N 0° 11' 16" W			
6	1410.59'	N 20° 38' 42" W			
	6899.29				

Book No. E-994

Date: January, 1965

301

I, Herman E. Smith, a Registered Professional Engineer, do hereby certify that the above plat is a true and accurate survey of Sec. 15, T 9 N, R 18 E as made under my supervision.

6,899

*Herman E. Smith*  
 HERMAN E. SMITH  
 Reg. Prof. Engr. No. 1417