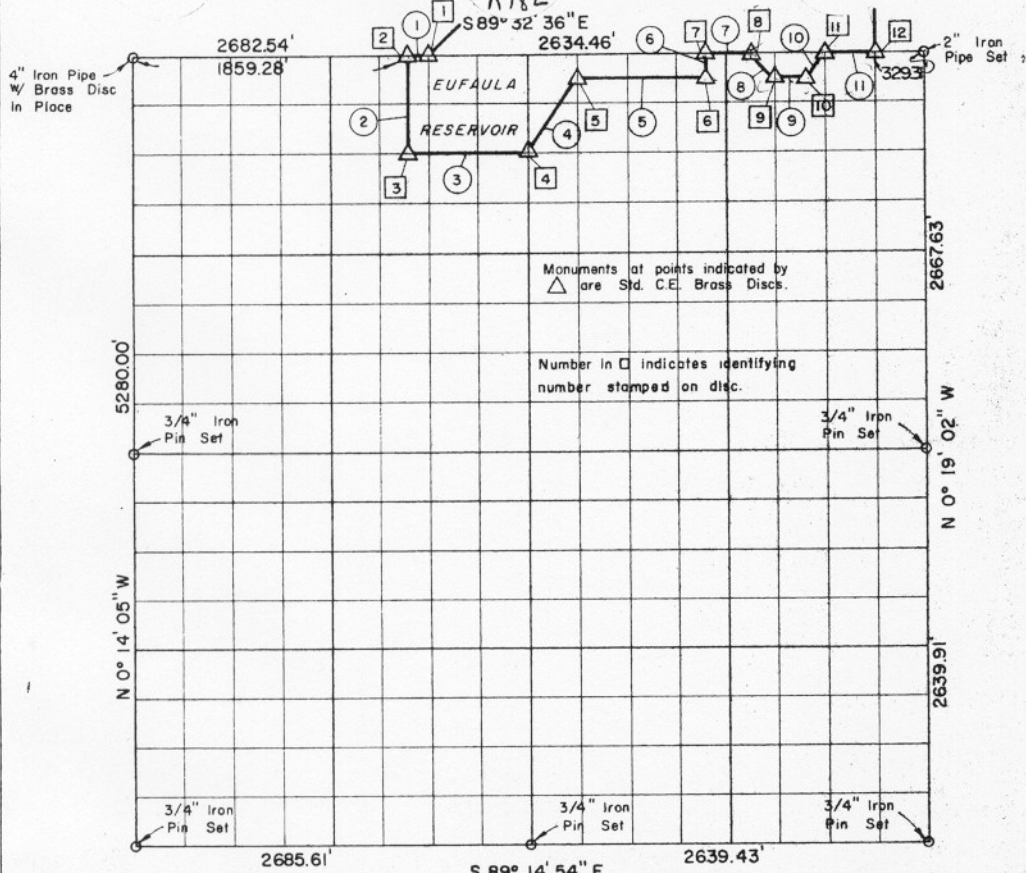


EC. 6 , T 9 N, R 18 E HASKELL COU.



Course No.	Distance	Bearing	Course No.	Distance	Bearing
1	164.65'	N 89° 32' 36" W			
2	669.52'	S 0° 14' 59" E			
3	823.46'	S 89° 14' 45" E			
4	589.65'	N 33° 41' 12" E			
5	823.41'	S 89° 14' 44" E			
6	184.80'	N 0° 17' 17" W			
7	329.31'	S 89° 32' 36" E			
8	251.16'	S 41° 15' 12" E			
9	164.68'	S 89° 14' 44" E			
10	248.54'	N 41° 10' 52" E			
11	329.31'	S 89° 32' 36" E			
	4614.69				

Book No. E-999

Date: January, 1965

265

I, Herman E. Smith, a Registered Professional Engineer, do hereby certify that the above plat is a true and accurate survey of Sec. 6 , T 9 N, R 18 E as made under my supervision.

4,278

*Herman E. Smith*  
 HERMAN E. SMITH  
 Reg. Prof. Engr. No. 1417