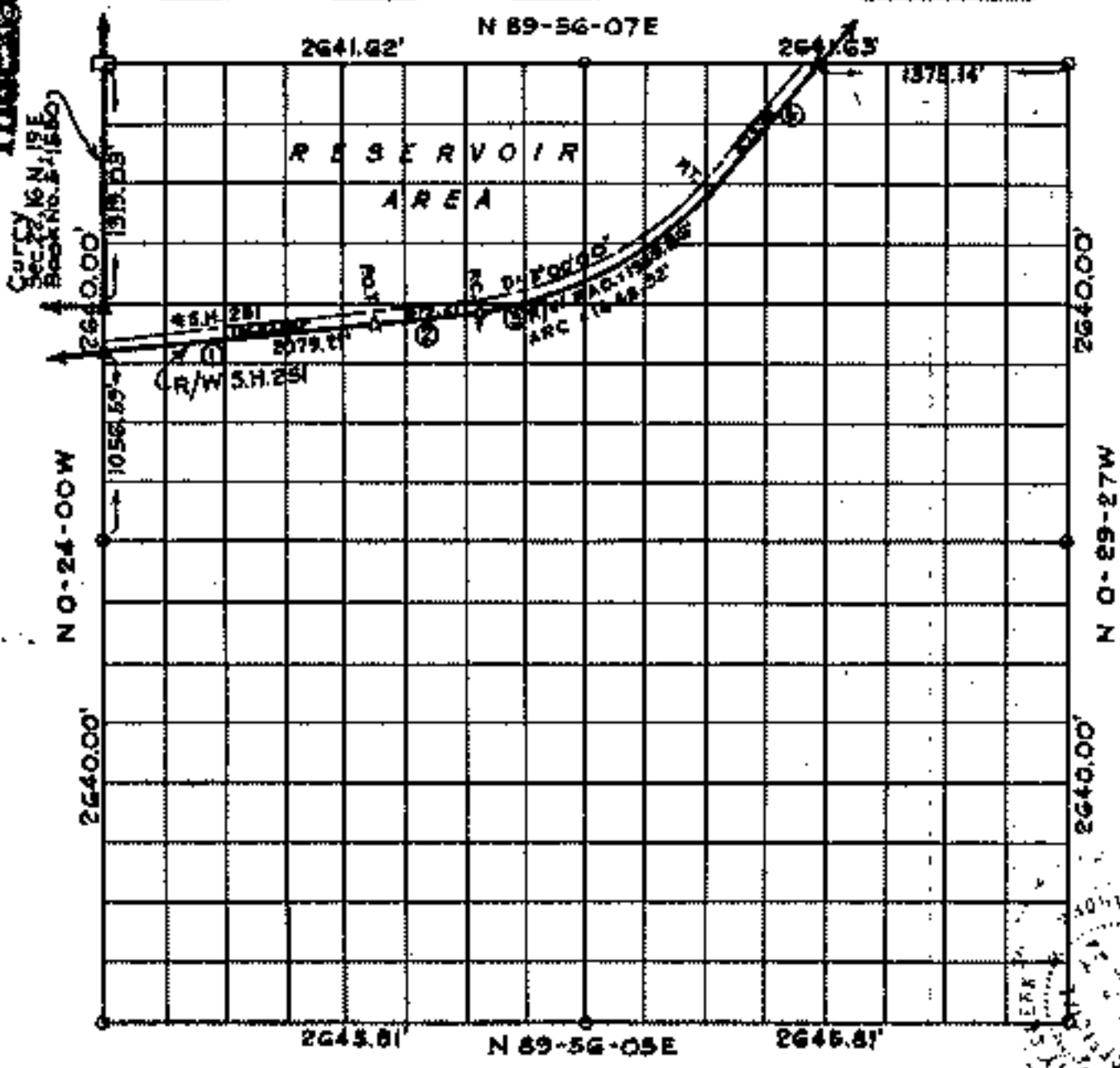


P.O. Box 461
Tulsa, Okla. 74110

FORT GIBSON LAKE, AREA "A" OKLAHOMA

Performed under Contract Number DACW56-77C-0058
SEC. 23, T. 16N., R. 19E., COUNTY WAGONER

Indexed



Course No.	Distance	Bearing	Course No.	Distance	Bearing
1	1500.00'	N83-08-17E			
2	579.21'	N83-08-17E			
3	1413.36'	N62-00-08E			
4	893.76' Long Chord	N40-52-02E			

Certificate of Survey

I hereby certify that the above plat is a true and correct representation of the survey made in Section 23, T. 16N., R. 19E., Wagoner County, Oklahoma.

Charles J. Finklea
Charles J. Finklea
Registered Land Surveyor

COUNTY OF WAGONER
Filed for Record in the Office of the
COUNTY CLERK AND RECORDED

JUN 6 1977
AT 4:30 O'CLOCK
JACK O. JONES, County Clerk
By *M. M. [Signature]*

5021

Sheet 1 of 2

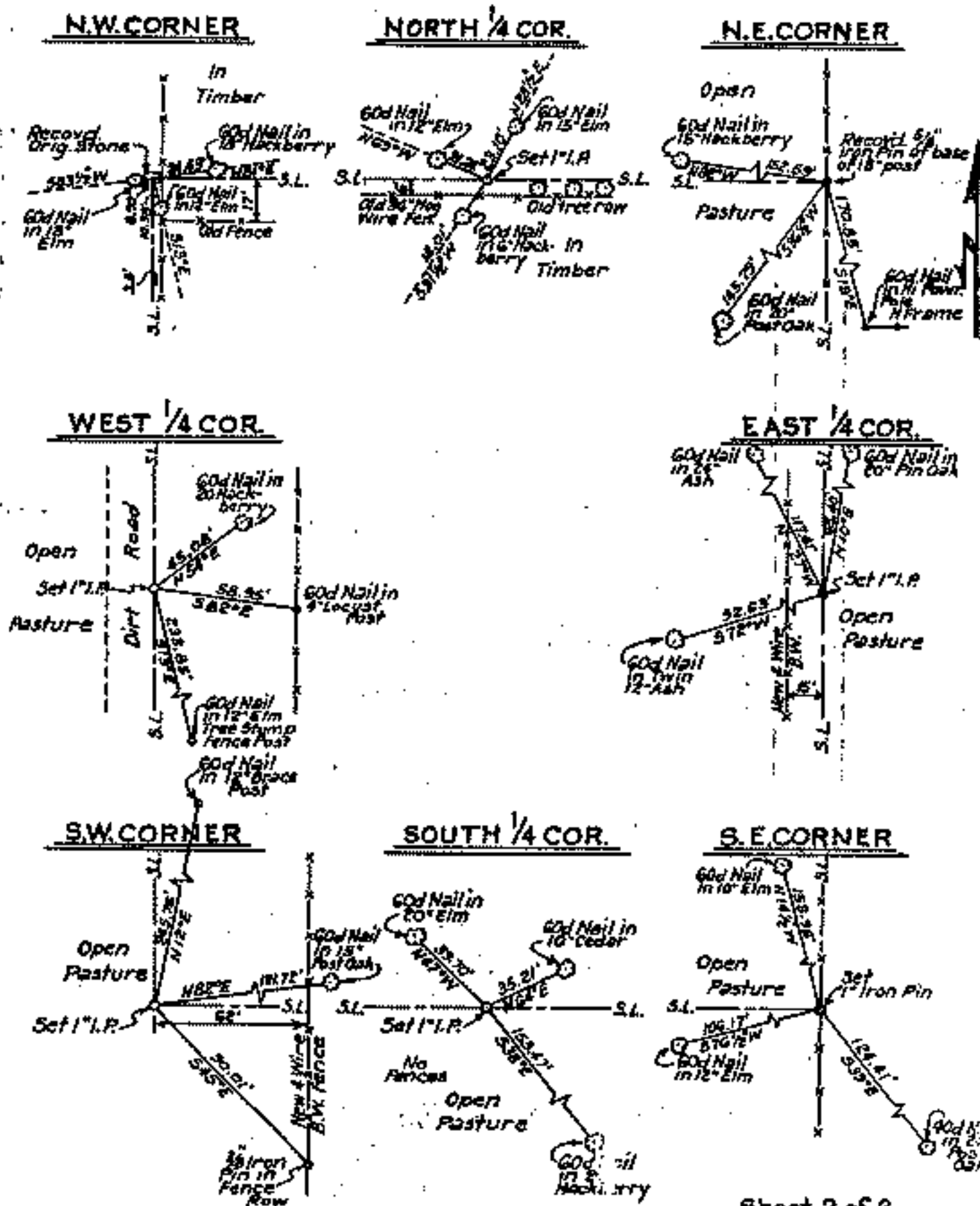
Legend

- △ Monument
- Orig. Corner
- Iron Pin
- ▲ Mon. by O.H.D.

Scale: 1:10,000
Date: May 1977
Field Book No. 5-1920

OKLAHOMA BOOK 486 PAGE 63
 SECTION AND QUARTER SECTION CORNER
 REFERENCES FOR

SECTION 23, T. 16 N., R. 19 E., COUNTY WAGONER



Sheet 2 of 2

Scale: 1" = 50'
 Date: May 1977
 Field Book No. 5-196

Certificate of Survey

I hereby certify that the above plat is a true and correct representation of the survey made in Section 23, T. 16 N., R. 19 E., Wagoner County, Oklahoma.

Charles J. Pinklea
 Charles J. Pinklea
 Registered Land Surveyor No. 35



Legend

- ▲ Monument
- Orig. Corner
- Iron Pin
- ▲ Mon. by O.H.I.