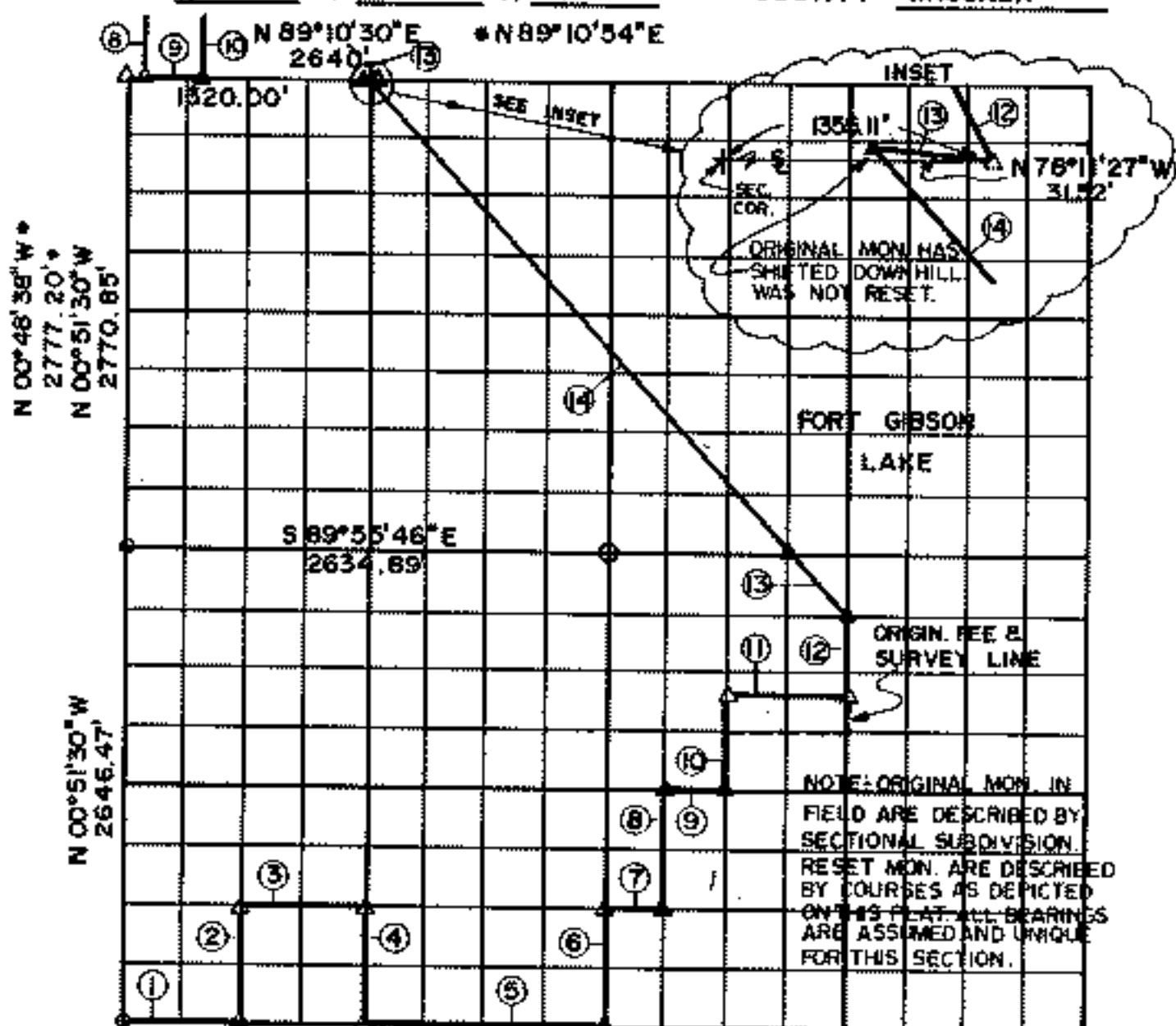


RECORD BOUNDARY PLAT

LAKE FORT GIBSON, OKLAHOMA

SEC 3 T 16 N R 19 E COUNTY WAGONER



EAST N89°57'18"E *
2629.77' ORIGINAL SURVEY

EAST 2629.77' FIELD SURVEY 1984 *

| Course No. | Distance | Bearing | Course No. | Distance | Bearing |
|------------|----------|--------------|------------|----------|--------------|
| 1 | 657.44 | EAST | 1 * | 657.16 | N 89°57'18"E |
| 2 | 661.42 | N00°49'51"W | 2 * | 661.55 | N 00°50'15"W |
| 3 | 657.76 | S 89°59'02"E | 3 * | 657.40 | N 89°57'42"E |
| 4 | 661.24 | S 00°48'13"E | 4 * | 661.47 | S 00°48'59"E |
| 5 | 1314.89 | EAST | 5 * | 1314.32 | N 89°57'18"E |
| 6 | 660.81 | N00°44'56"W | 6 * | 661.33 | N 00°46'28"W |
| 7 | 329.22 | S 89°58'56"E | 7 * | 328.76 | N 89°58'23"E |
| 8 | 660.71 | N00°44'07"W | 8 * | 660.79 | N 00°42'02"W |
| 9 | 329.04 | S 89°57'53"E | 9 * | 328.81 | S 89°55'27"E |
| 10 | 330.30 | N00°43'18"W | 10 * | 539.62 | N 00°42'44"W |
| 11 | 658.24 | S 89°57'21"E | 11 * | 658.52 | S 89°46'57"E |
| 12 | 660.41 | N00°41'39"W | 12 * | 450.31 | N 00°37'52"W |
| 13 | 469.49 | N 45°14'20"W | 13 * | 469.96 | N 45°12'19"W |
| 14 | 3650.19 | N 39°50'55"W | 14 * | 3652.41 | N 39°47'18"W |

JUNE, 1949

FieldBook No. 5-1170, 5-1997 Date DEC. 1984

SURVEY PERFORMED BY THE
CORPS OF ENGINEERS, TULSA DISTRICT
1984 SURVEY & PLAT BY
ENTZ ENGINEERING & ASSOCIATES INC. AND
HUFFMAN SURVEYING CO., INC.

LEGEND

- ▲ MONUMENT ORG.
- * ORIGINAL CORNER
- INCH P.M.
- △ MONUMENT RES.

40-31 T16N, R19E

Book 5-1170

"A" 1a 660.31
 "B" 1a 328.88
 "C" 1a 660.71
 "D" 1a 329.04
 "E" 1a 330.30
 "F" 1a 653.24
 "G" 1a 660.41
 "H" 1a 469.89 - N44°-56'-15"W
 "I" 1a 3650.19 - N39°-36'-50"W

#1 NW Cor. SW, SW, SE
 #2 SW Cor. SE, NW, SW, SE
 #3 NW Cor. NE, NW, SW, SE
 #4 SW Cor. SE, NW, SE
 #5 NW Cor. SW, SE, NW, SE
 #6 NW Cor. SW, SW, NE, SE
 #7 NW Cor. SW, NW, NE, SE
 #8 NW Cor. NE, NE, NW, SE
 #9 NW Cor. NE, NW

