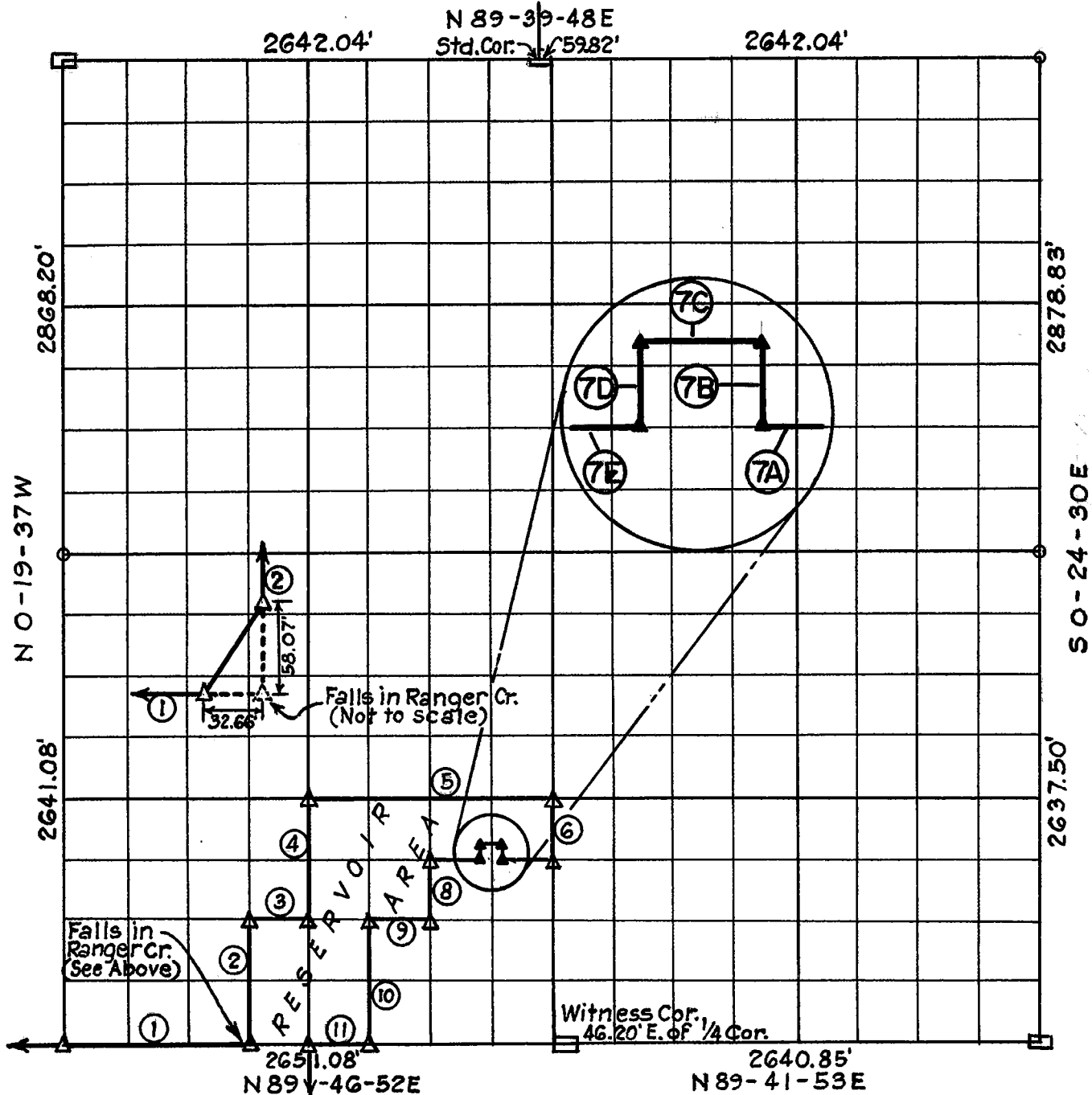
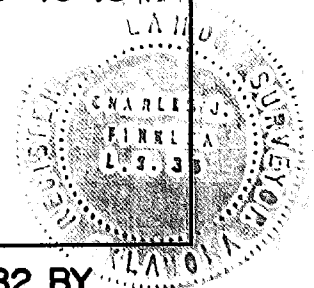


PARTIAL BOUNDARY SURVEYS
 FORT GIBSON LAKE, AREA "A"
 OKLAHOMA

Performed under Contract Number DACW56-77-C-0058
 SEC. 4, T. 16N., R. 20E., COUNTY CHEROKEE



Course No.	Distance	Bearing	Course No.	Distance	Bearing
1	994.16'	N 89-46-52 E	7A	303.70'	S 89° 46' 48" W
2	660.28'	N 0-21-44 W	7B	55.00'	N 0° 13' 12" W
3	331.25'	N 89-46-50 E	7C	57.00'	S 89° 46' 48" W
4	660.28'	N 0-22-26 W	7D	55.00'	S 0° 13' 12" E
5	1324.16'	N 89-46-47 E	7E	301.66'	S 89° 46' 48" W
6	330.65'	S 0-25-16 E			
7	662.36'	S 89-46-48 W			
8	330.15'	S 0-23-51 E			
9	331.25'	S 89-46-49 W			
10	660.29'	S 0-23-09 E			
11	331.39'	S 89-46-52 W			



Certificate of Survey

NOTE: COURSE No. 7 REVISED OCT. 1982 BY ENTZ ENGINEERING & ASSOC.

I hereby certify that the above plat is a true and correct representation of the survey made in Section 4, T. 16N., R. 20E., Cherokee County, Oklahoma.

Sheet 1 of 2

Legend

- ▲ Monument
- Orig. Corner
- Iron Pin
- ▲ Mon. by O.H.D.

Scale: 1:10,000
 Date: May 1977
 Field Book No. 5-1921

Charles J. Finklea
 Charles J. Finklea
 Registered Land Surveyor No. 35