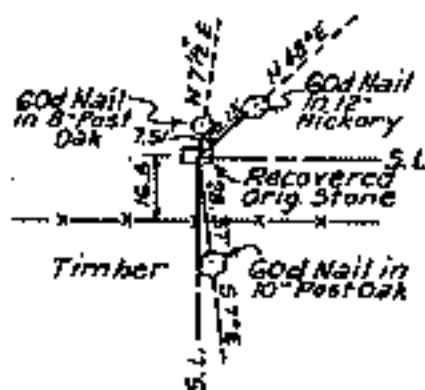
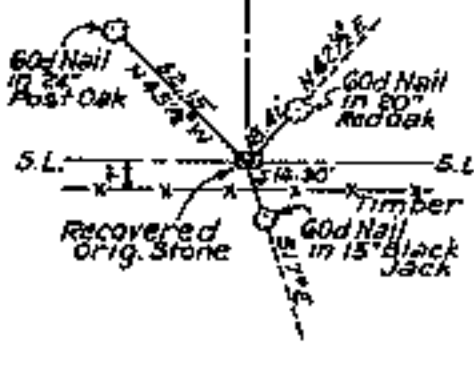


PORTION OF SECTION 4, T. 16 N., R. 20 E., COUNTY CHEROKEE, OKLAHOMA  
SECTION AND QUARTER SECTION CORNER  
REFERENCES FOR  
SECTION 4, T. 16 N., R. 20 E., COUNTY CHEROKEE

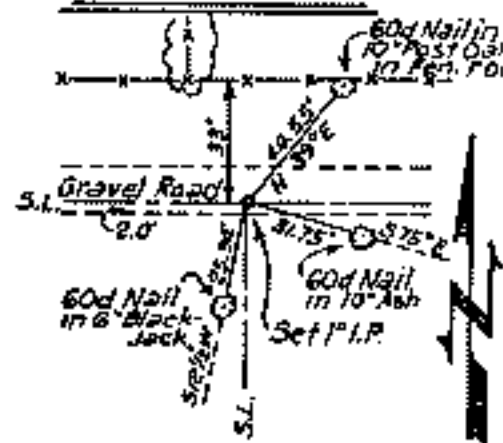
CLOSING SEC. COR.



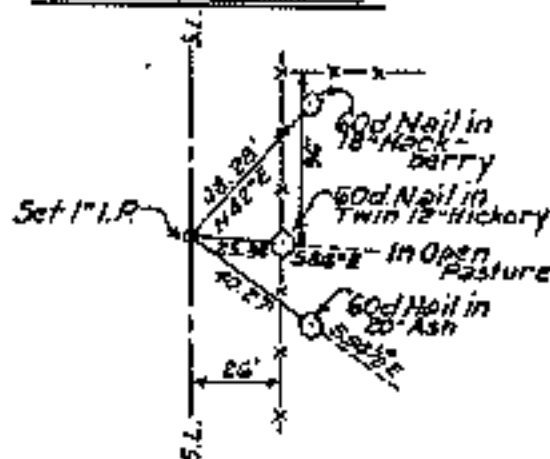
STD. SEC. COR.



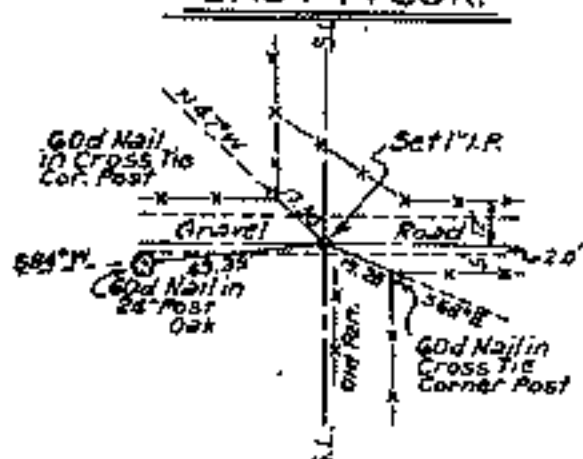
N.E. CORNER



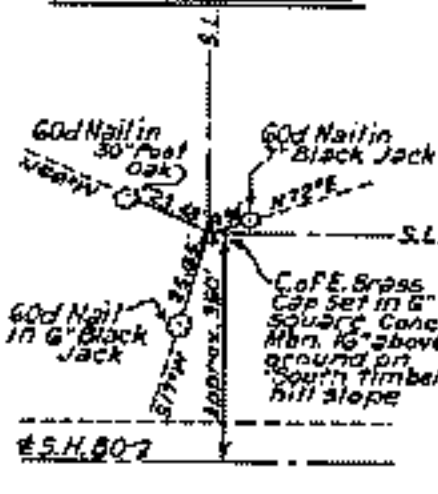
WEST 1/4 COR.



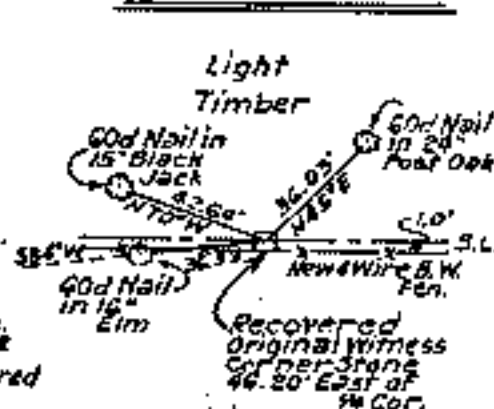
EAST 1/4 COR.



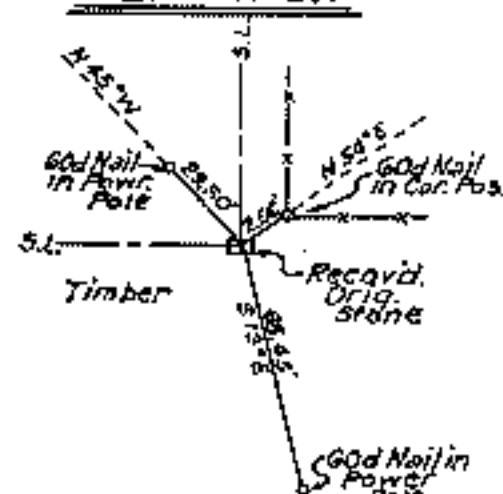
S.W. CORNER



SOUTH 1/4 COR.



S.E. CORNER



Sheet 2 of 2

Certificate of Survey

Scale: - 1" = 50'  
Date: - May 1977  
Field Book No. 5-1921

I hereby certify that the above plat is a true and correct representation of the survey made in Section 4, T. 16 N., R. 20 E., Cherokee County, Oklahoma.

Charles J. Finklea  
Registered Land Surveyor No. 35

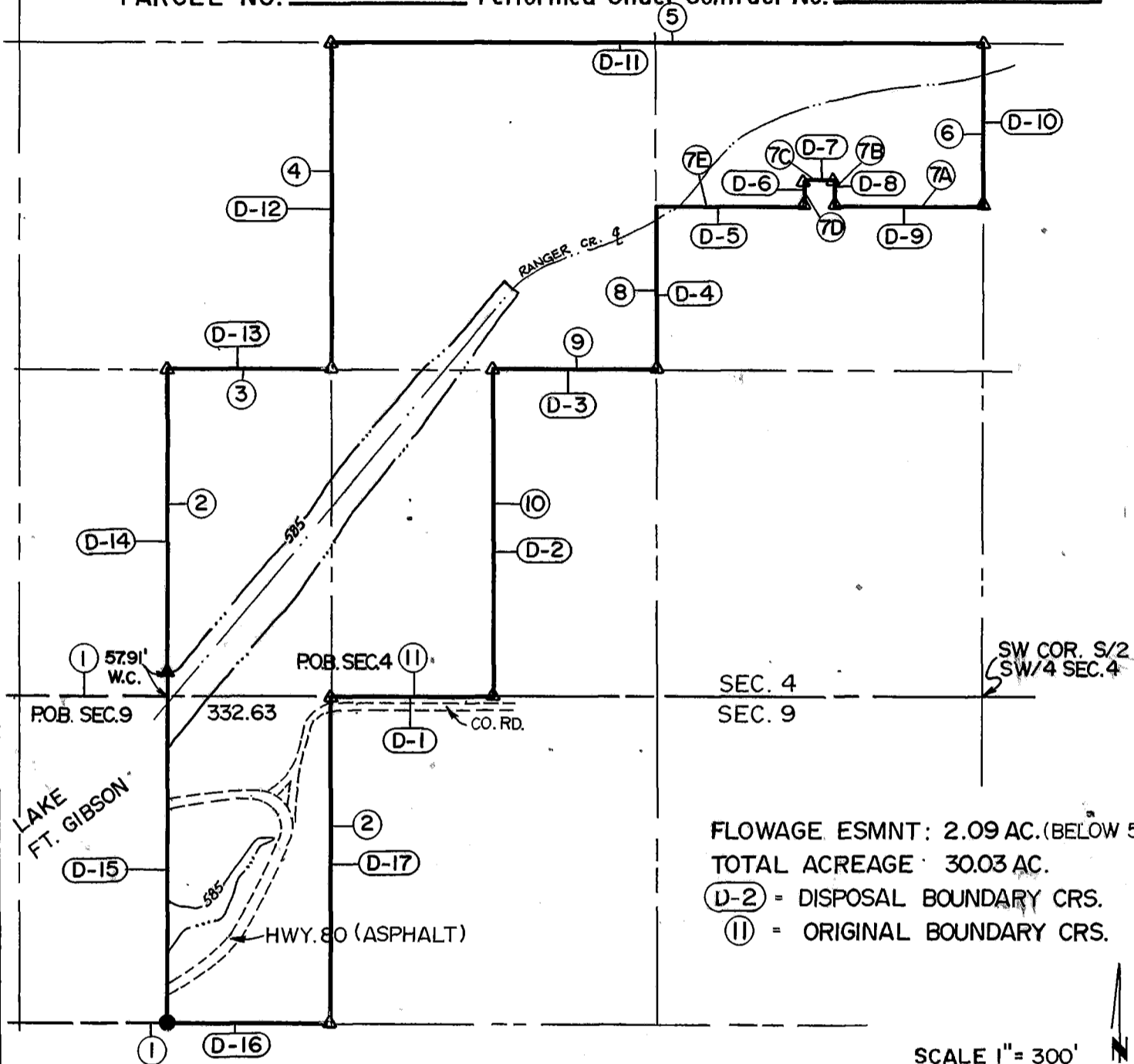
Legend

- △ Monument
- Orig. Corner
- Iron Pin
- ▲ Mon. by O.H.D.

DISPOSAL TRACT SURVEY PLAT  
 FT. GIBSON DAM & RESERVOIR  
 LAKE FT. GIBSON, OKLA.

SEC. 4 & 9, T 16 N, R 20 E, COUNTY CHEROKEE

PARCEL NO. 2 Performed Under Contract No. DACA56-88-D-0050



FLOWAGE ESMNT: 2.09 AC. (BELOW 585)  
 TOTAL ACREAGE: 30.03 AC.

(D-2) = DISPOSAL BOUNDARY CRS.  
 (11) = ORIGINAL BOUNDARY CRS.

| Course No. | Distance | Bearing         | Course No. | Distance | Bearing         |
|------------|----------|-----------------|------------|----------|-----------------|
| D-1        | 329.47   | N 89° 46' 18" E | D-14       | 660.28   | S 00° 23' 11" E |
| D-2        | 660.30   | N 00° 23' 09" W | D-15       | 660.89   | S 00° 23' 13" E |
| D-3        | 331.42   | N 89° 47' 53" E | D-16       | 328.01   | N 89° 45' 13" E |
| D-4        | 330.23   | N 00° 22' 11" W | D-17       | 660.79   | N 00° 00' 49" E |
| D-5        | 302.07   | N 89° 47' 13" E |            |          |                 |
| D-6        | 54.94    | N 00° 11' 53" W |            |          |                 |
| D-7        | 56.95    | N 89° 46' 41" E |            |          |                 |
| D-8        | 54.96    | S 00° 14' 50" E |            |          |                 |
| D-9        | 303.70   | N 89° 47' 32" E |            |          |                 |
| D-10       | 329.66   | N 00° 24' 31" W |            |          |                 |
| D-11       | 1324.88  | S 89° 48' 12" W |            |          |                 |
| D-12       | 660.26   | S 00° 22' 30" E |            |          |                 |
| D-13       | 331.25   | S 89° 46' 15" W |            |          |                 |

Field Book No. 5-1921 Date DEC., 1988

**CERTIFICATE OF SURVEY** ENTZ ENGINEERING & ASSOCIATES INC. AND  
 I Hereby Certify That The HUFFMAN SURVEYING CO., INC.  
 Above Plat is a True and Correct  
 Representation of the Survey  
 Made in Sec 4 & 9 T 16 N, R 20 E.  
 A Joint Venture  
 for

U.S. ARMY ENGINEER DISTRICT, TULSA  
 CORPS OF ENGINEERS

— LEGEND —

Δ MONUMENT  
 □ ORIGINAL CORNER  
 ○ IRON PIN/CAP

*Ron Huffman*  
 Ron Huffman U.S. 1020