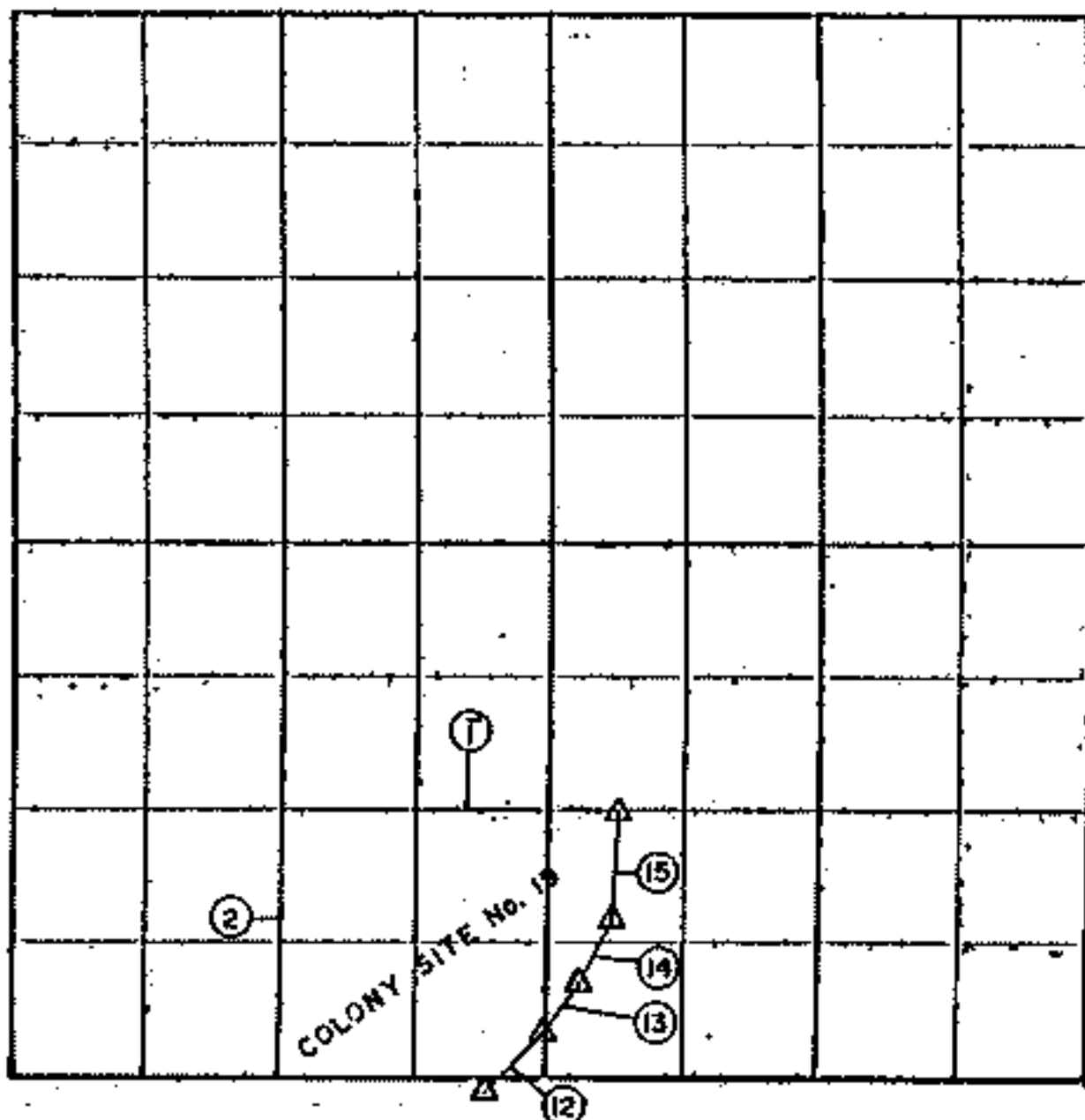


PARTIAL BOUNDARY SURVEYS
 FT. GIBSON LAKE
 OKLAHOMA

Performed Under Contract Number DACW 56-85-C-0127

SW 4th SEC. 6, T. 16 N., R. 20 E., COUNTY CHEROKEE



Course No.	Distance	Bearing	Course No.	Distance	Bearing
COLONY SITE No. 19					
1	821.85	N 89° 21' 58" W			
2	650.70	S 00° 37' W			
12	202.00	N 37° 49' E			
13	146.40	N 36° 28' E			
14	177.30	N 27° 32' E			
15	273.17	N 01° 38' E			



Field Book No. 5-2010 Date 12-6-85

SCOTT & ASSOCIATES, INC.
 Engineering & Surveying
 For

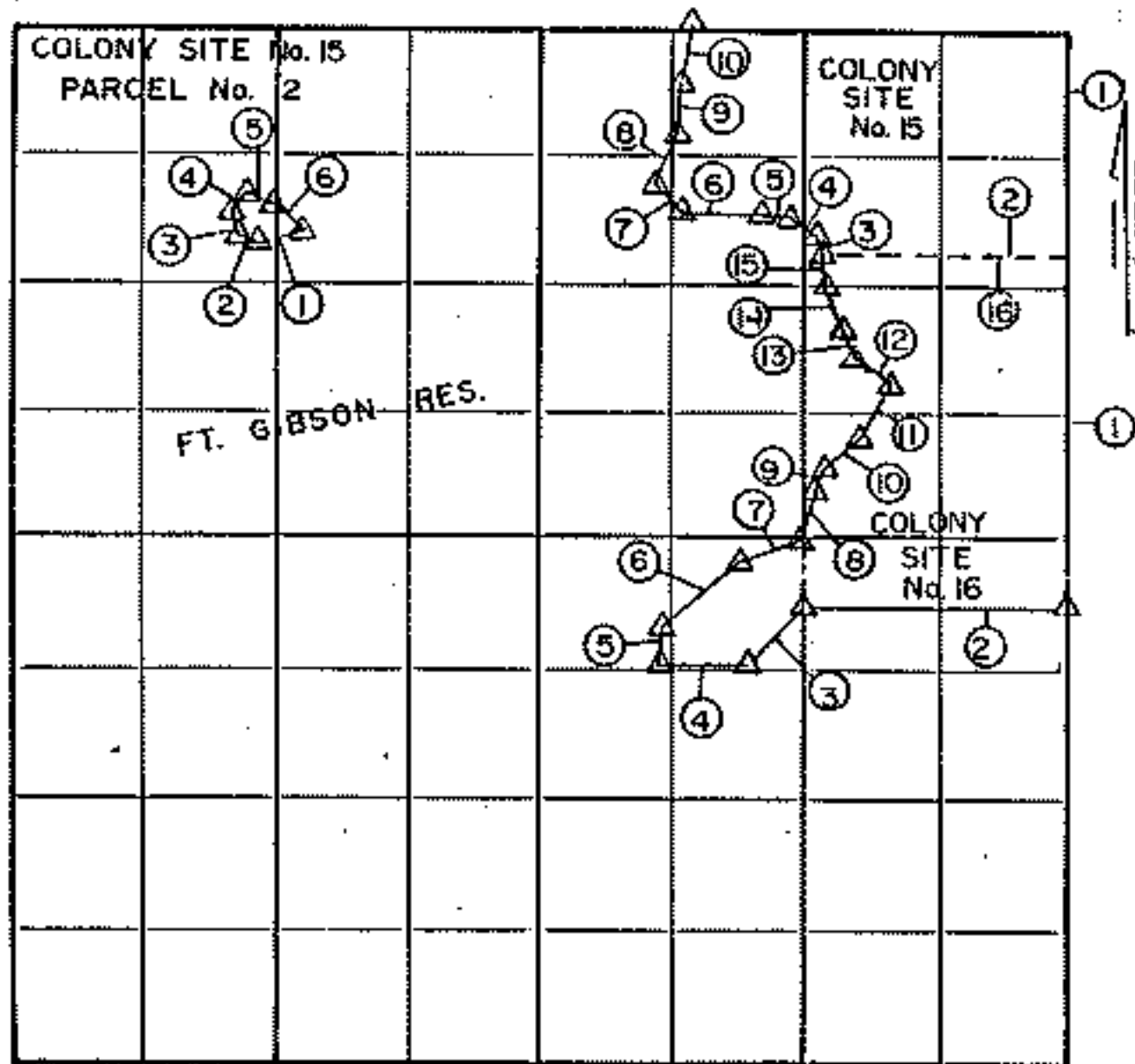
U.S. ARMY ENGINEER DISTRICT, TULSA
 CORPS OF ENGINEERS

△ MONUMENT
 □ ORIGINAL CORNER
 ○ IRON PIN

**PARTIAL BOUNDARY SURVEYS
FT GIBSON LAKE
OKLAHOMA**

Performed Under Contract Number DACW 56-85-C-0127

NW. 4 SEC. 6, T. 16-N, R. 20-E, COUNTY CHEROKEE



Course No.	Distance	Bearing	Course No.	Distance	Bearing
COLONY SITE No. 15			13	79.60	N 22° 26' 50" W
1	928.00	S 00° 16' E	14	115.40	N 16° 09' 50" W
2	666.20	N 89° 35' W	15	92.90	N 12° 39' 50" W
3	200.00	S 45° 25' W	16	618.30	S 89° 54' E
4	223.00	S 89° 16' 20" W			
5	95.00	N 04° 10' 20" E	CON'T SHEET 2		
6	263.70	N 48° 52' 20" E			
7	147.60	N 70° 48' 05" E			
8	134.20	N 18° 52' 05" E			
9	65.20	N 19° 43' 50" E			
10	122.70	N 46° 23' 50" E			
11	150.20	N 30° 39' 10" E			
12	114.90	N 54° 12' 50" W			

CERTIFICATE OF SURVEY

Field Book No. 6-2010 Date 12-12-85

SCOTT & ASSOCIATES, INC.
Engineering & Surveying
For

U.S. ARMY ENGINEER DISTRICT, TULSA
CORPS OF ENGINEERS

Δ MONUMENT
□ ORIGINAL CORNER
○ IRON PIN

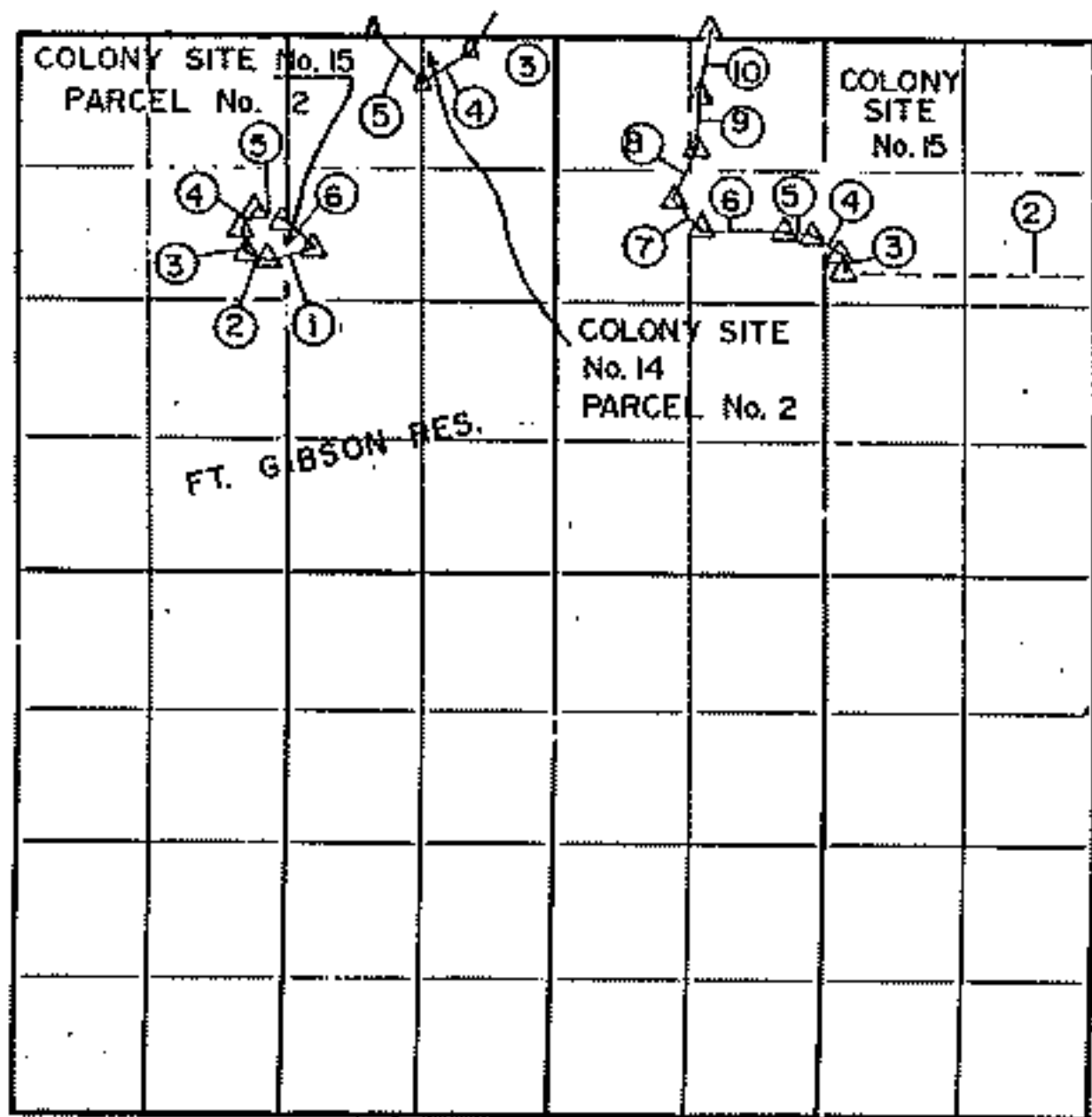
MYLAR II

1. I hereby certify that the above is a true and correct copy of the survey made on the 12th day of December, 1985, at Tulsa, Oklahoma.
SCOTT, JR.
REGISTERED PROFESSIONAL SURVEYOR

PARTIAL BOUNDARY SURVEYS
FT. GIBSON LAKE
OKLAHOMA

Performed Under Contract Number DACW 56-85-C-0127

NW 4 SEC. 6 , T. 16 N. , R. 20 E. , COUNTY CHEROKEE



Course No.	Distance	Bearing	Course No.	Distance	Bearing
COLONY SITE No. 15 PARCEL No. 2			COLONY SITE No. 15 PARCEL No. 2		
1	556.56	S 00° 16' E	1	119.60	S 72° 42' W
2	618.30	N 89° 54' W	2	57.90	N 66° 53' W
3	41.20	N 13° 23' 50" W	3	58.90	N 15° 16' W
4	78.40	N 58° 26' 50" W	4	57.20	N 32° 44' E
5	66.13	N 85° 25' 40" W	5	72.65	S 69° 53' E
6	201.30	N 89° 38' 40" W	6	108.50	S 50° 49' E
7	97.50	N 42° 46' 40" W	COLONY SITE No. 14 PARCEL No. 2		
8	137.40	N 21° 16' 40" E	4	144.45	S 54° 50' 16" W
9	137.80	N 05° 02' 40" E	5	172.00	N 42° 51' 34" W
10	153.80	N 09° 40' 20" E			

CERTIFICATE OF SURVEY
I hereby certify that the above is a true and correct representation of the survey made by me or under my direction and supervision on this date.

U.S. ARMY ENGINEER DISTRICT, TULSA
CORPS OF ENGINEERS

SCOTT, JR.

Field Book No. 5-2010 Date 12-12-85

SCOTT & ASSOCIATES, INC.
Engineering & Surveying
For

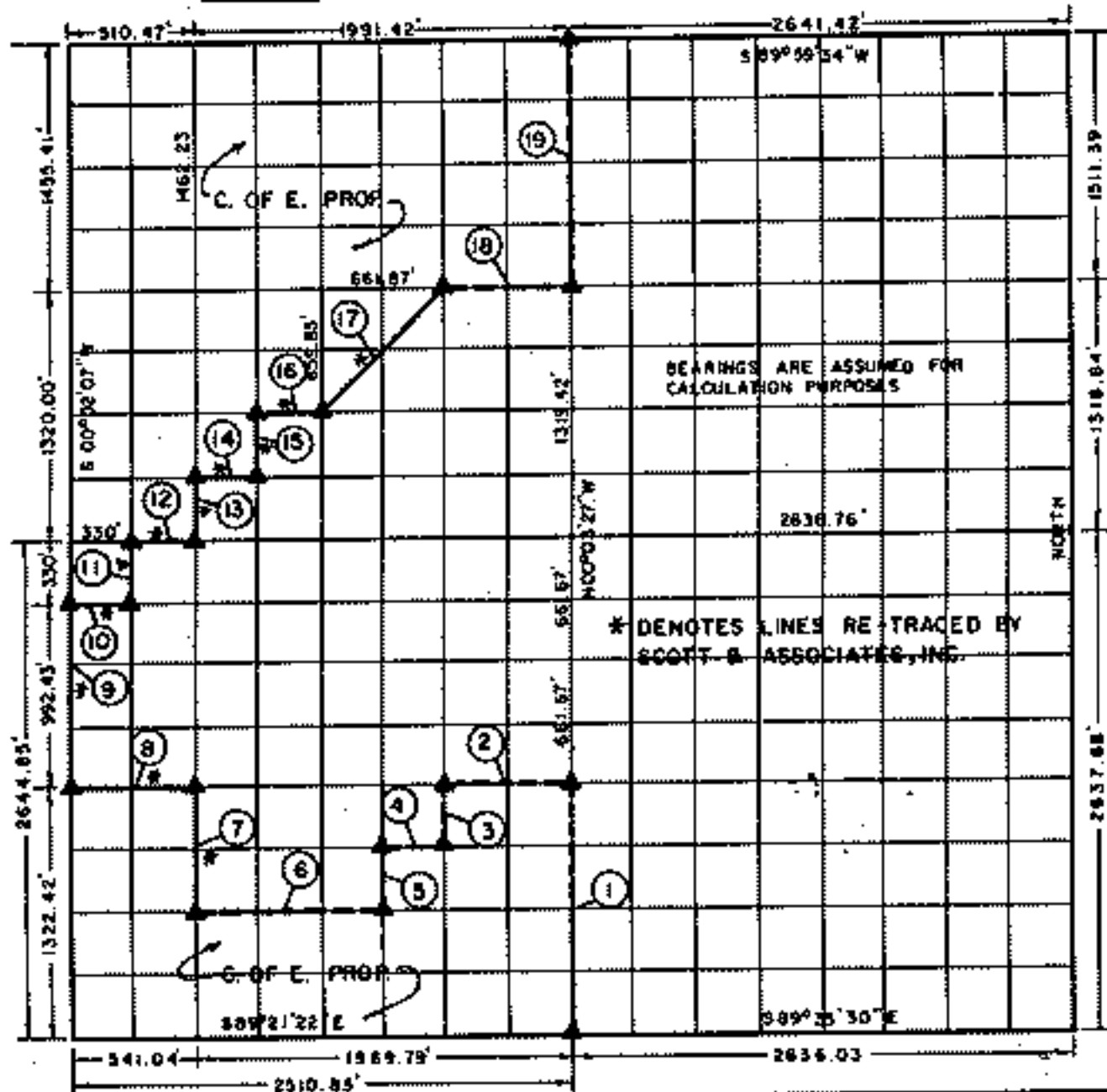
U.S. ARMY ENGINEER DISTRICT, TULSA
CORPS OF ENGINEERS

▲ MONUMENT
○ ORIGINAL CORNER
○ IRON PIN

PARTIAL BOUNDARY SURVEYS
FT. GIBSON LAKE OKLA.
SEC. 6 T-16 -N R-20 -E

COUNTY CHEROKEE

D.O. NO. 0009 Performed Under Contract No. DACA 56-86-D-0041



Course No.	Distance	Bearing
1	1323.34	N 00° 03' 27" W
2	658.56	N 89° 22' 35" W
3	330.77	S 00° 08' 02" E
4	328.96	N 89° 22' 16" W
5	330.75	S 00° 10' 20" E
6	986.22	N 89° 21' 58" W
* 7	661.35	N 00° 17' 14" W
* 8	533.58	N 89° 22' 35" W
* 9	992.43	N 00° 02' 07" E
* 10	330.00	S 89° 23' 30" E
* 11	330.00	N 00° 02' 07" E
* 12	194.13	S 89° 23' 48" E
* 13	329.96	N 00° 17' 14" W

Course No.	Distance	Bearing
* 14	330.28	S 89° 23' 36" E
* 15	329.95	N 00° 14' 56" W
* 16	330.50	S 89° 23' 24" E
* 17	927.70	N 45° 17' 00" E
18	661.87	S 89° 23' 01" E
19	1482.69	N 00° 03' 27" W

Field Book No. 5-1177 Date 7 / 87

CERTIFIED LAND SURVEY
I hereby certify that this map was prepared by me or under my direct supervision and that I am a duly Licensed Land Surveyor of the State of Oklahoma.
BASIL E. BROWN, JR. 343

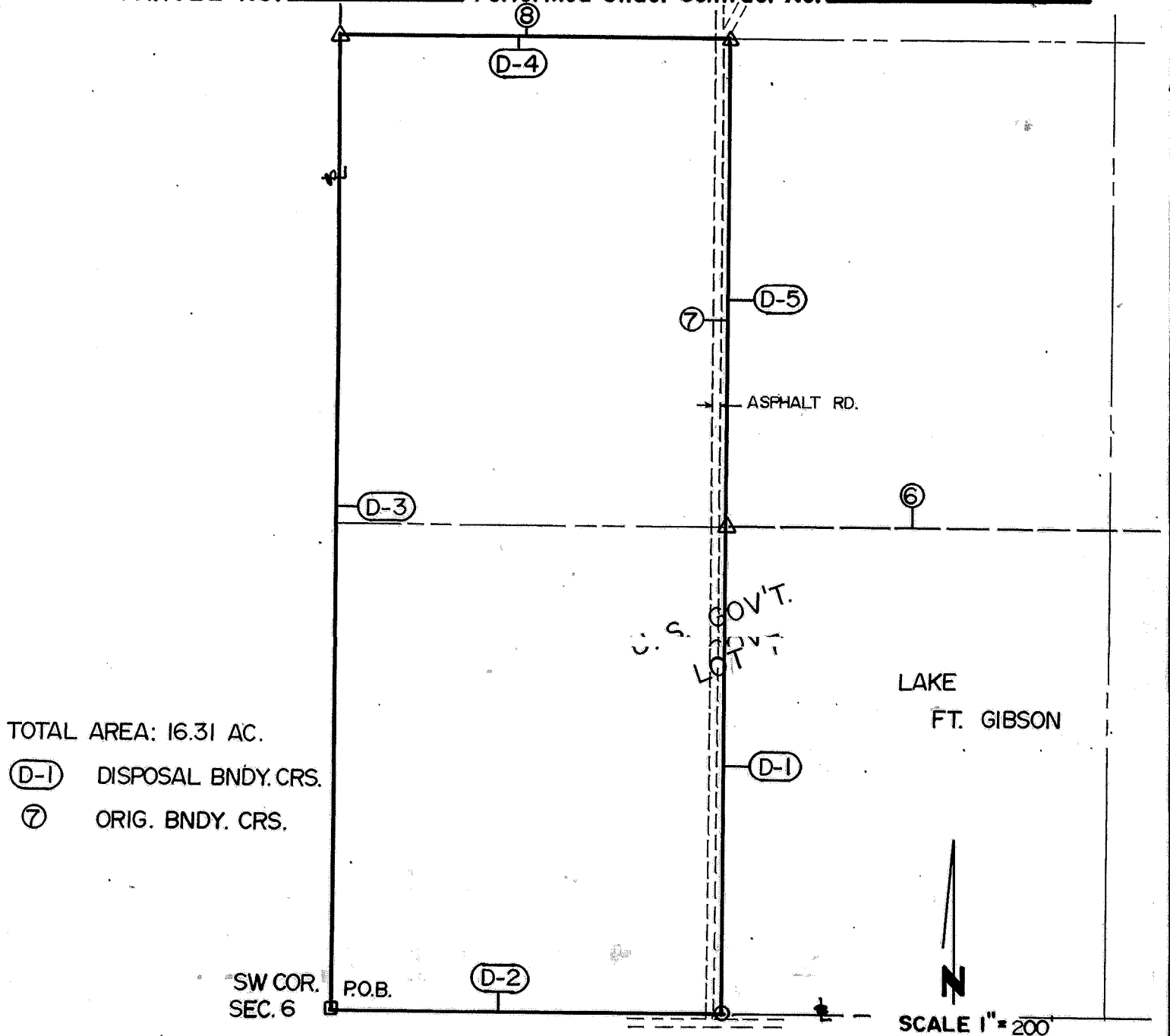
SCOTT & ASSOCIATES, INC.
LAND SURVEYORS
U.S. ARMY CORPS OF ENGINEERS
TULSA DISTRICT

LEGEND
△ MONUMENT
□ ORIGINAL CORNER
○ IRON PIN

**DISPOSAL TRACT SURVEY PLAT
FT. GIBSON DAM & RESERVOIR
LAKE FT. GIBSON, OKLA.**

SEC. 6 , T 16 N , R 20 E , COUNTY CHEROKEE

PARCEL NO. 7 Performed Under Contract No. DACA56-88-D-0050



TOTAL AREA: 16.31 AC.

- (D-1) DISPOSAL BNDY. CRS.
- ⑦ ORIG. BNDY. CRS.

Course No.	Distance	Bearing	Course No.	Distance	Bearing
D-1	661.34	S 00°17'14"E			
D-2	541.21	N 89°21'36"W			
D-3	1322.55	N 00°03'35"E			
D-4	533.20	S 89°21'54"E			
D-5	661.37	S 00°17'14"E			

Field Book No. 5-2025 Date JAN., 1989

CERTIFICATE OF SURVEY ENTZ ENGINEERING & ASSOCIATES INC. AND HUFFMAN SURVEYING CO., INC.
I Hereby Certify That The Above Plat is a True and Correct Representation of the Survey Made in Sec. 6 T16 N, R20 E.
A Joint Venture for

U.S. ARMY ENGINEER DISTRICT, TULSA
CORPS OF ENGINEERS

- LEGEND —
- △ MONUMENT
 - ORIGINAL CORNER
 - IRON PIN/CAP

Ken Huffman
Ken Huffman U.S. 1020