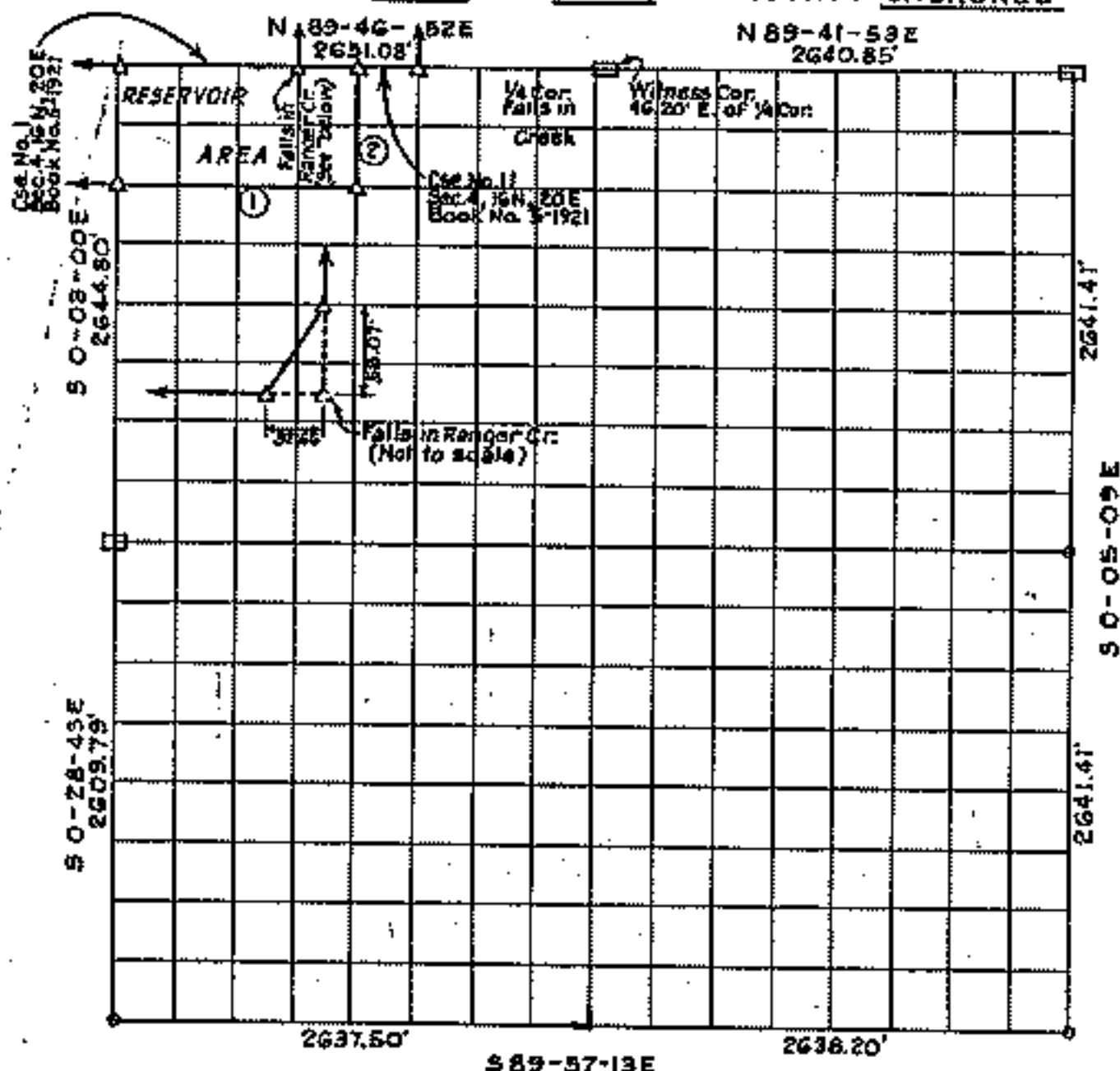


PARTIAL BOUNDARY SURVEYS  
**FORT GIBSON LAKE, AREA "A"**  
**OKLAHOMA**

Performed under Contract Number DACW56-77-C-0058  
 SEC. 9, T. 16N., R. 20E., COUNTY CHEROKEE



Course No.	Distance	Bearing	Course No.	Distance	Bearing
1	1326.61'	N 89-45-42E			
2	660.55'	N 0-04-56W			

Certificate of Survey

I hereby certify that the above plat is a true and correct representation of the survey made in Section 9, T. 16N., R. 20E., Cherokee County, Oklahoma.

Sheet 1 of 2

Legend

- △ Monument
- Orig. Corner
- Iron Pin
- ▲ Mon. by O.H.D.

Scale: 1:10,000  
 Date: May 1977  
 Field Book No. 5-722

*Charles J. Finklea*  
 Charles J. Finklea  
 Registered Land Surveyor N<sup>o</sup> 35

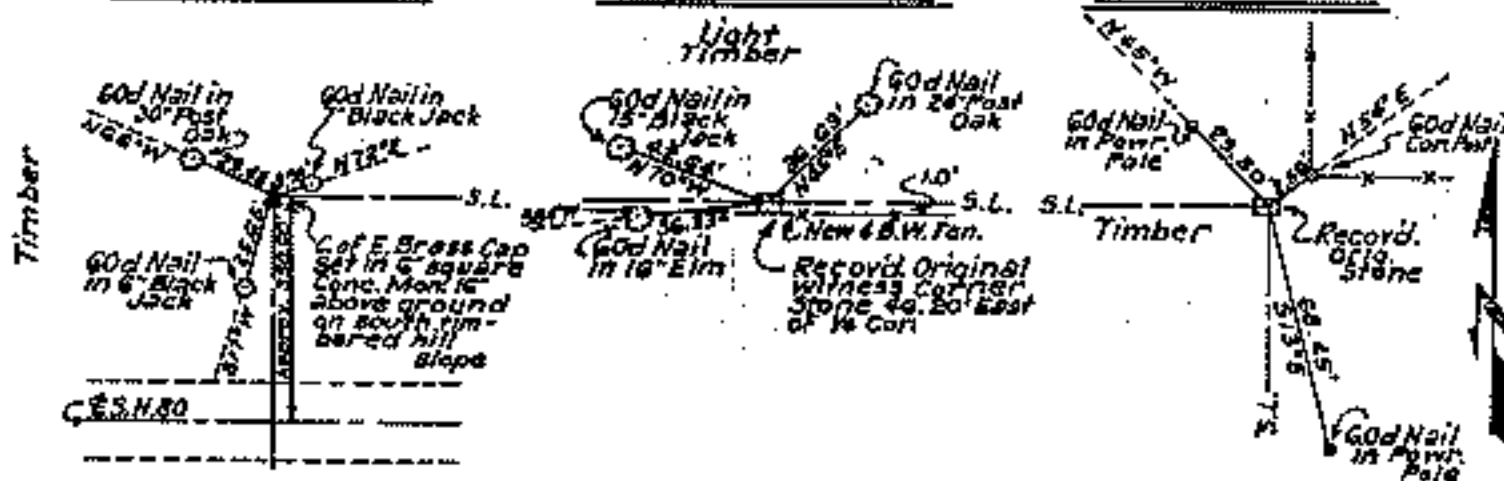
**FORT GIBSON LAKE, AREA "A"  
OKLAHOMA**

**SECTION AND QUARTER SECTION CORNER  
REFERENCES FOR  
SECTION 9, T.16N., R.20E., COUNTY CHEROKEE**

**N.W. CORNER**

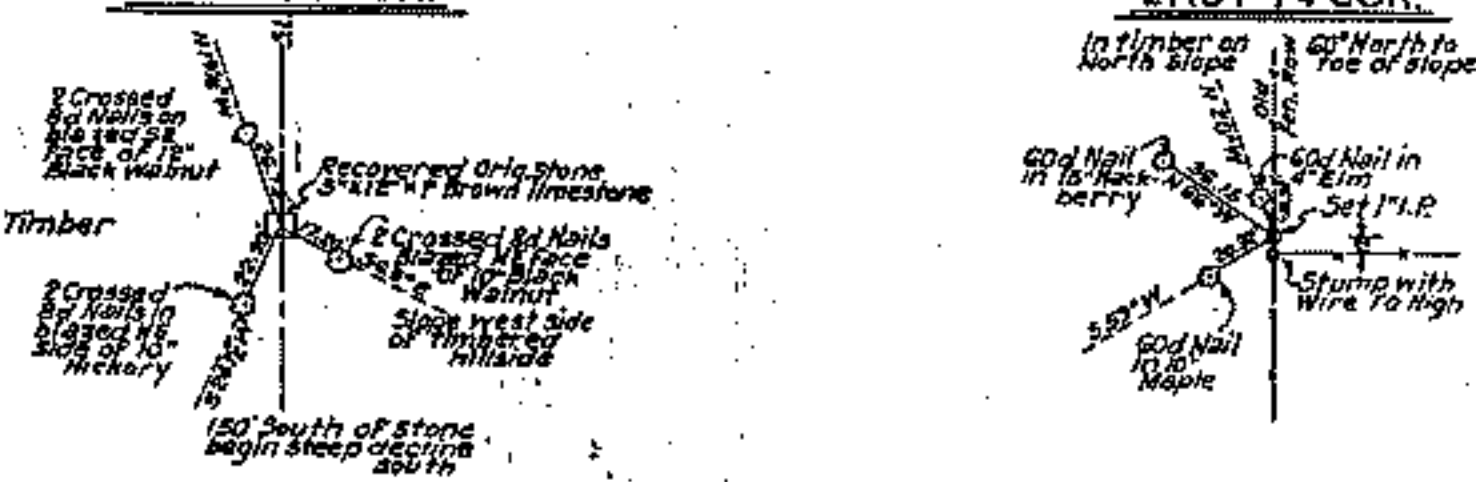
**NORTH 1/4 COR.**

**N.E. CORNER**



**WEST 1/4 COR.**

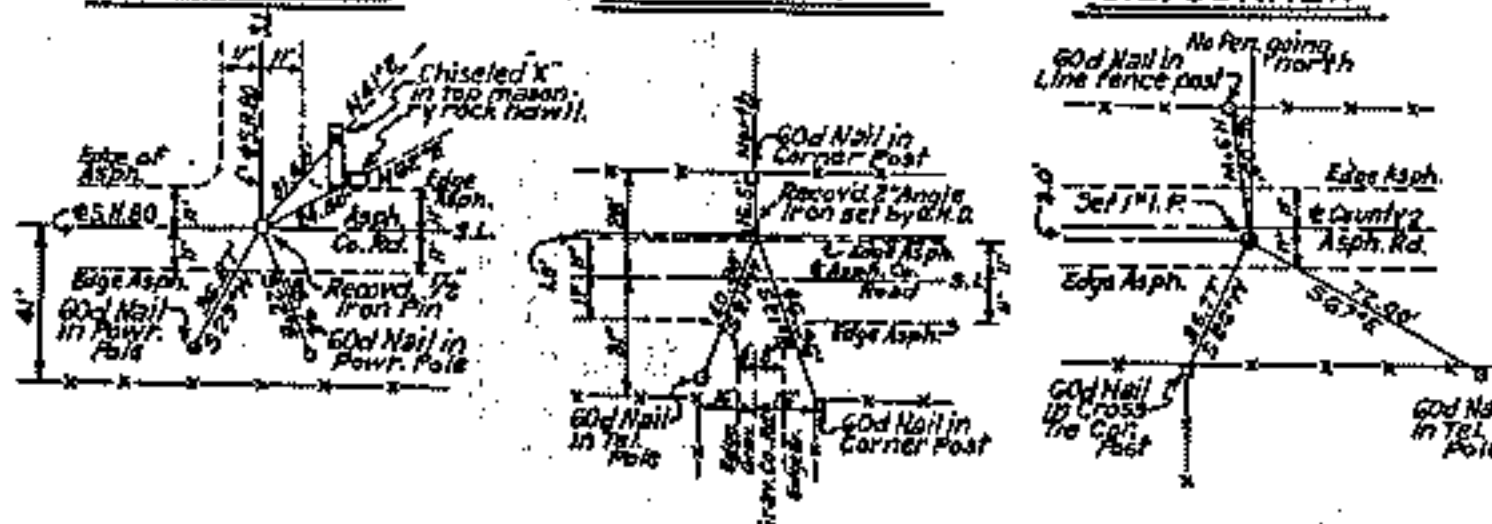
**EAST 1/4 COR.**



**S.W. CORNER**

**SOUTH 1/4 COR.**

**S.E. CORNER**



Sheet 2 of 2

Scale: 1" = 50'  
Date: May 1977  
Field Book No. 5-1922

**Certificate of Survey**

I hereby certify that the above plat is a true and correct representation of the survey made in Section 9, T.16N., R.20E., Cherokee County, Oklahoma

Charles J. Firkle



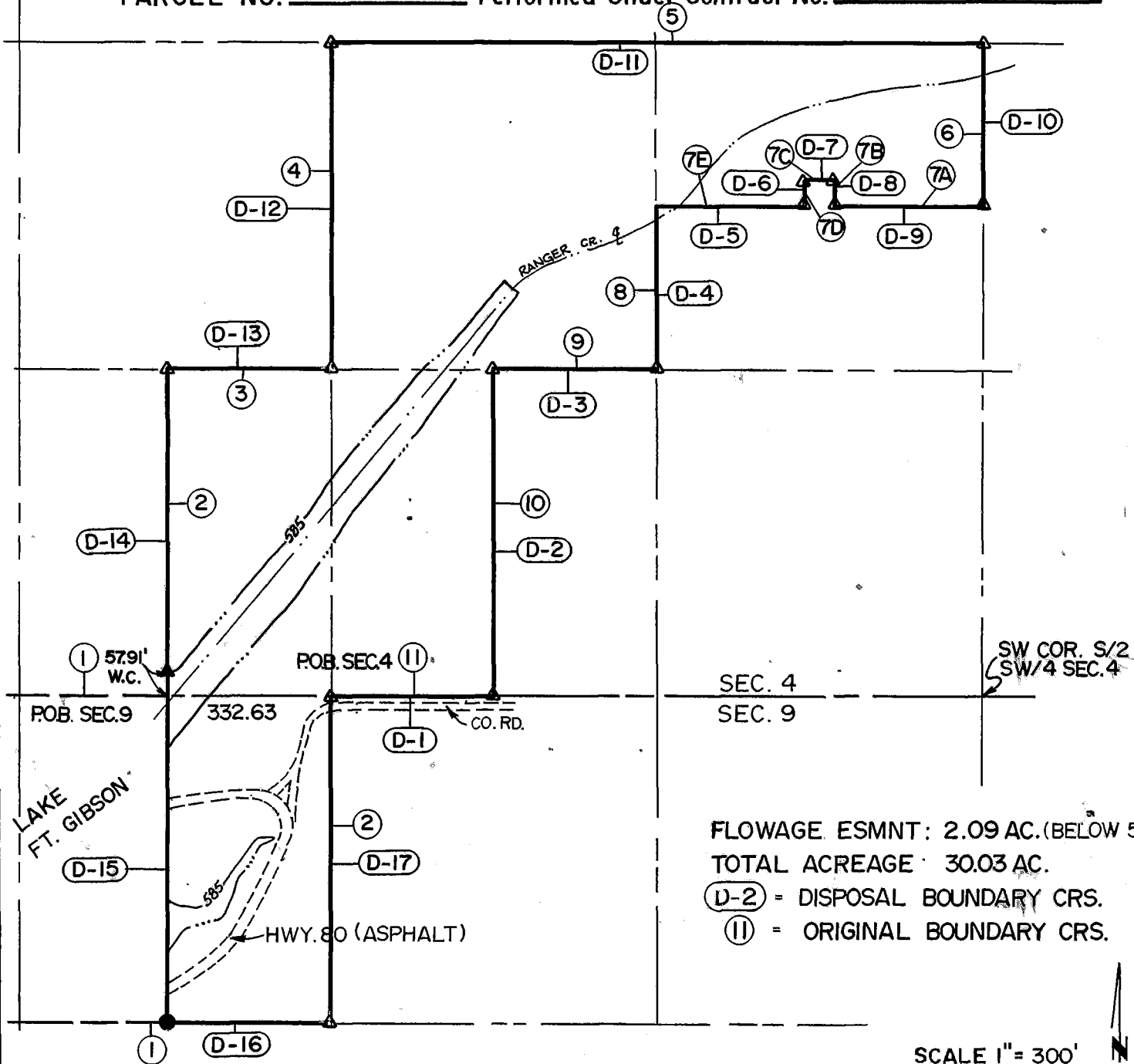
**Legend**

- ▲ Monument
- Orig. Corner
- Iron Pin
- ▲ Mon. by O.H.D.

**DISPOSAL TRACT SURVEY PLAT  
FT. GIBSON DAM & RESERVOIR  
LAKE FT. GIBSON, OKLA.**

SEC. 4 & 9, T 16 N, R 20 E, COUNTY CHEROKEE

PARCEL NO. 2 Performed Under Contract No. DACA56-88-D-0050



FLOWAGE ESMNT: 2.09 AC. (BELOW 585)

TOTAL ACREAGE: 30.03 AC.

(D-2) = DISPOSAL BOUNDARY CRS.

(II) = ORIGINAL BOUNDARY CRS.

SCALE 1" = 300'

Course No.	Distance	Bearing	Course No.	Distance	Bearing
D-1	329.47	N 89° 46' 18" E	D-14	660.28	S 00° 23' 11" E
D-2	660.30	N 00° 23' 09" W	D-15	660.89	S 00° 23' 13" E
D-3	331.42	N 89° 47' 53" E	D-16	328.01	N 89° 45' 13" E
D-4	330.23	N 00° 22' 11" W	D-17	660.79	N 00° 00' 49" E
D-5	302.07	N 89° 47' 13" E			
D-6	54.94	N 00° 11' 53" W			
D-7	56.95	N 89° 46' 41" E			
D-8	54.96	S 00° 14' 50" E			
D-9	303.70	N 89° 47' 32" E			
D-10	329.66	N 00° 24' 31" W			
D-11	1324.88	S 89° 48' 12" W			
D-12	660.26	S 00° 22' 30" E			
D-13	331.25	S 89° 46' 15" W			

Field Book No. 5-1921

Date DEC., 1988

**CERTIFICATE OF SURVEY** ENTZ ENGINEERING & ASSOCIATES, INC. AND  
I Hereby Certify That The HUFFMAN SURVEYING CO., INC.  
Above Plat is a True and Correct  
Representation of the Survey  
Made in Sec 269 T. 16 N, R. 20 E.  
A Joint Venture  
for

U.S. ARMY ENGINEER DISTRICT, TULSA  
CORPS OF ENGINEERS

— LEGEND —

Δ MONUMENT  
□ ORIGINAL CORNER  
○ IRON PIN/CAP

*Ron Huffmar*  
Ron Huffmar U.S. 1020

SHEET 1 OF 3