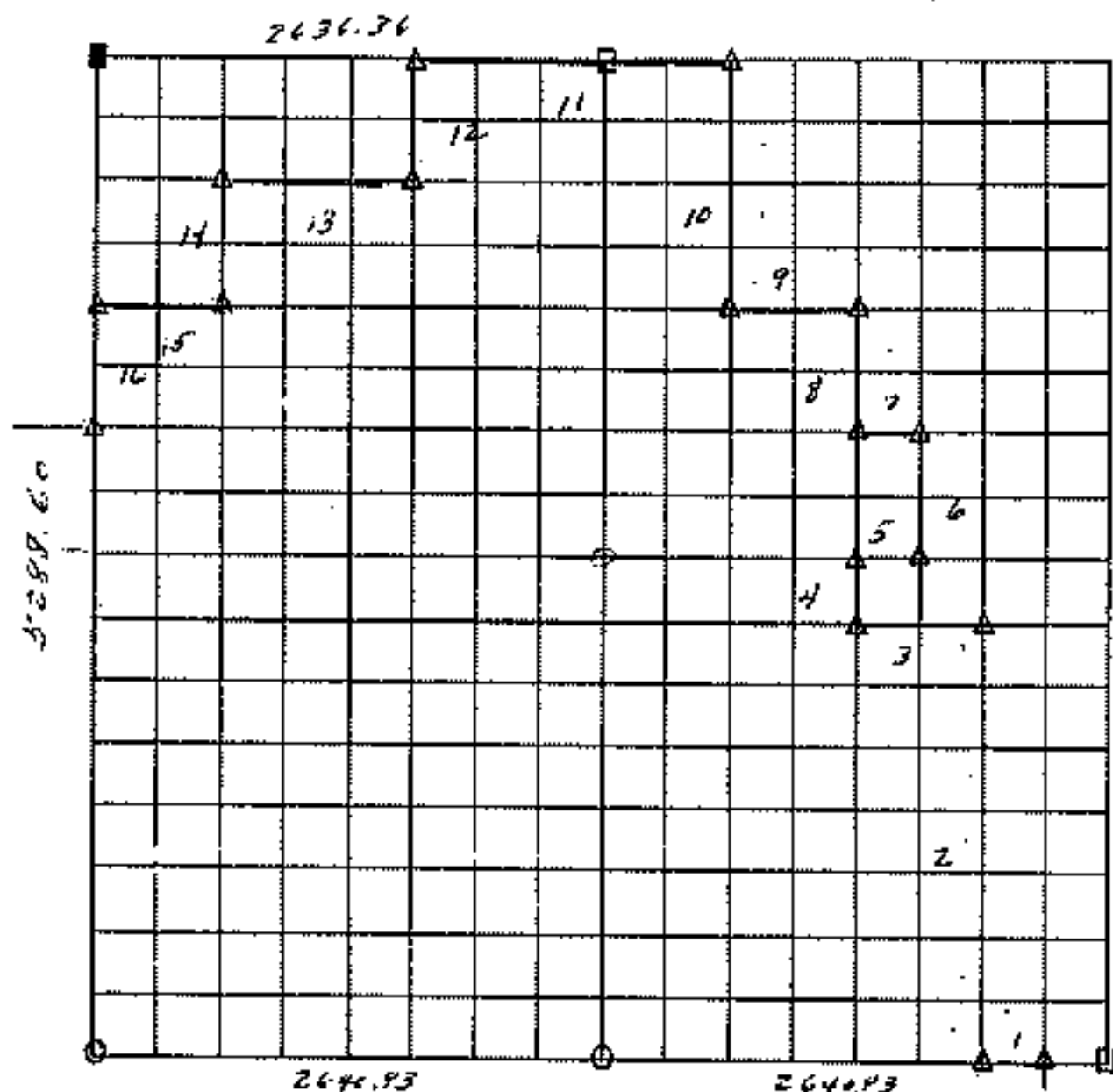


# RECORD BOUNDARY PLAT

SEC 16 T 17N R 19E

COUNTY Wagon Wheel



Course No	Distance	Bearing	Course No	Distance	Bearing
1	330.12	N 25° 57'	14	661.78	S 0° 10' 32" E
2	2370.20	N 9° 11' 32" W	15	659.27	S 89° 50' 30" W
3	660.23	S 89° 53' 50" W	16	661.09	S 0° 49' 48" E
4	331.33	N 0° 11' 28" W			
5	328.93	N 89° 54' 32" E			
6	662.77	N 0° 11' 36" W			
7	330.12	S 89° 52' 42" W			
8	662.62	N 0° 11' 36" W			
9	660.23	S 89° 51' 20" W			
10	1324.77	N 0° 11' 36" W			
11	1648.86	S 89° 48' 36" W			
12	661.73	S 0° 10' 49" E			
13	998.40	S 89° 49' 50" W			

Field Book No. 5-1175 Date Nov. 1949

BEARINGS ARE ASSUMED -  
BEARS NOT STAMPED AS ABOVE

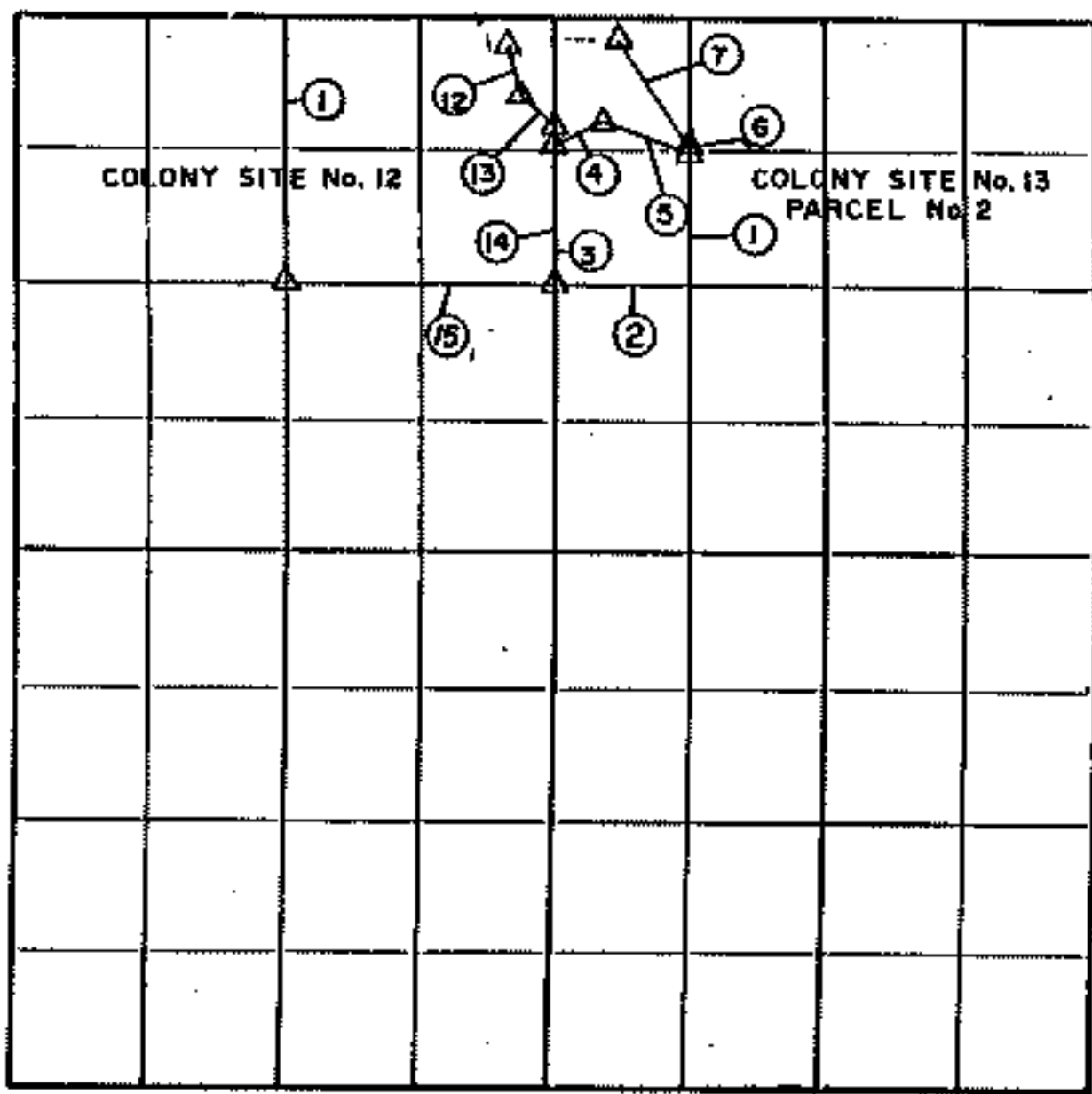
LEGEND

- ▲ MONUMENT
- ORIGINAL CORNER
- IRON PIN
- stone set

PARTIAL BOUNDARY SURVEYS  
 FT. GIBSON LAKE  
 OKLAHOMA

Performed Under Contract Number DACW 56-85-C-0127

NW 4 SEC. 16, T. 17 N., R. 19 E., COUNTY WAGONER



Course No.	Distance	Bearing	Course No.	Distance	Bearing
<b>COLONY SITE No. 12</b>			<b>COLONY SITE No. 13</b>		
1	1220.75	NORTH	<b>PARCEL No. 2</b>		
12	124.50	S 15° 48' E	1	661.73	S 00° 03' E
13	115.00	S 47° 28' E	2	329.70	N 89° 59' W
14	385.90	SOUTH	3	349.90	NORTH
15	663.00	N 69° 49' 48" W	4	131.40	N 63° 09' E
			5	228.30	S 68° 34' E
			6	2.00	N 00° 03' W
			7	327.10	N 33° 02' W

**CERTIFICATE OF SURVEY**  
 I hereby certify that my  
 work was done in accordance with  
 the laws of the State of Oklahoma  
 and the rules and regulations of the  
 Board of Surveyors.  
 \_\_\_\_\_  
 Surveyor

Field Book No. 5-2009 Date 10-22-85

**SCOTT & ASSOCIATES, INC.**  
 Engineering & Surveying  
 For

U.S. ARMY ENGINEER DISTRICT, TULSA  
 CORPS OF ENGINEERS

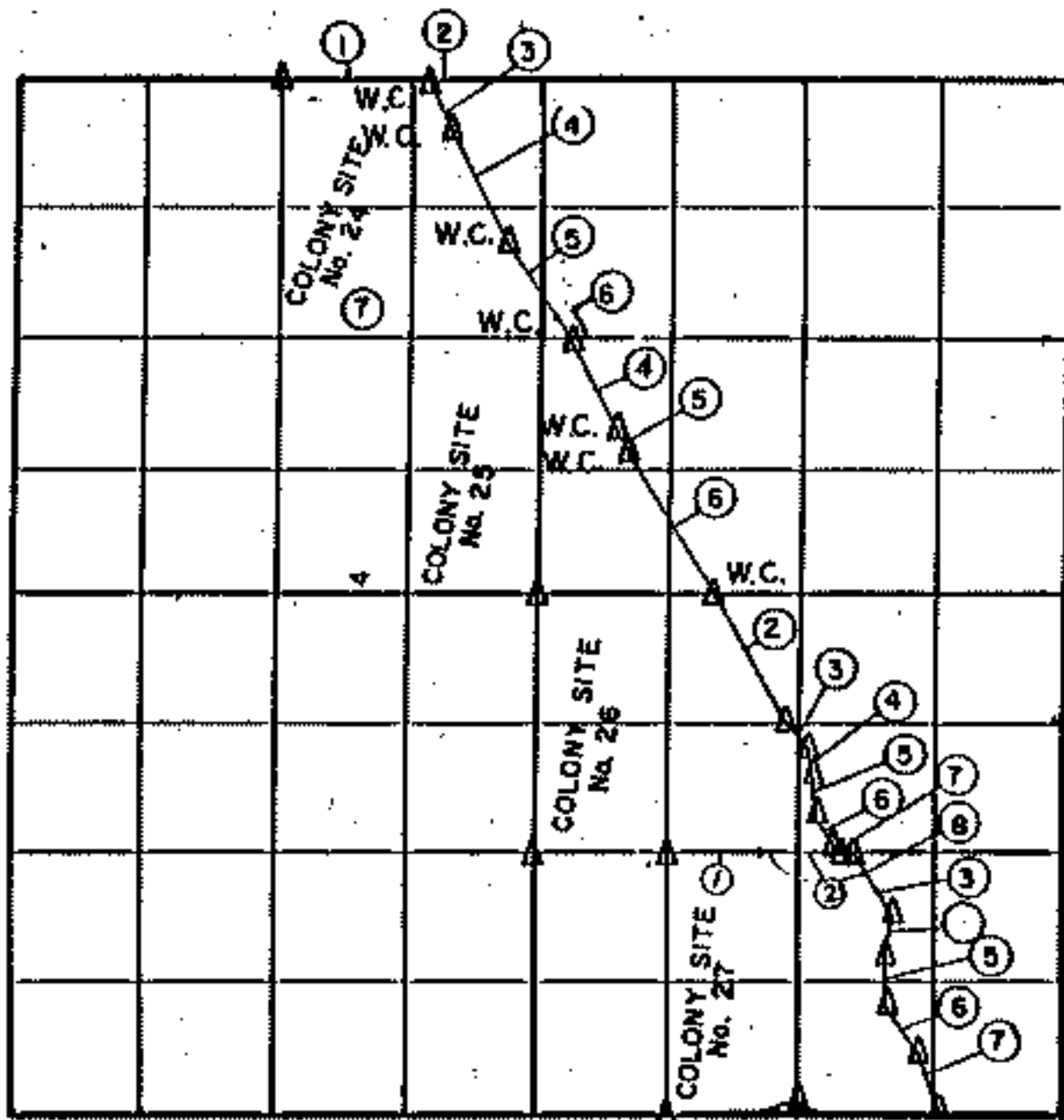
SHEET 3 of 4

Δ MONUMENT  
 □ ORIGINAL CORNER  
 ○ IRON PIN

PARTIAL BOUNDARY SURVEYS  
 FT GIBSON LAKE  
 OKLAHOMA

Performed Under Contract Number DACW 56-85-C-0127

NE 4 SEC. 16, T. 17 N., R. 19 E., COUNTY WAGONER



Course No.	Distance	Bearing	Course No.	Distance	Bearing
<b>COLONY SITE No. 27</b>					
1	242.80	S 89° 58' 20" E			
2	218.10	S 89° 58' 20" E			
3	189.15	S 31° 45' 25" E			
4	105.95	S 11° 08' 50" W			
5	133.62	S 00° 55' 50" E			
6	141.00	S 35° 48' 15" E			
7	148.50	S 18° 13' 55" E			

CERTIFICATE OF SURVEY  
 REGISTRATION NO. 1254  
 L.B. 85

Field Book N 5-2012 Date 11-7-85

SCOTT & ASSOCIATES, INC.  
 Engineering & Surveying  
 For

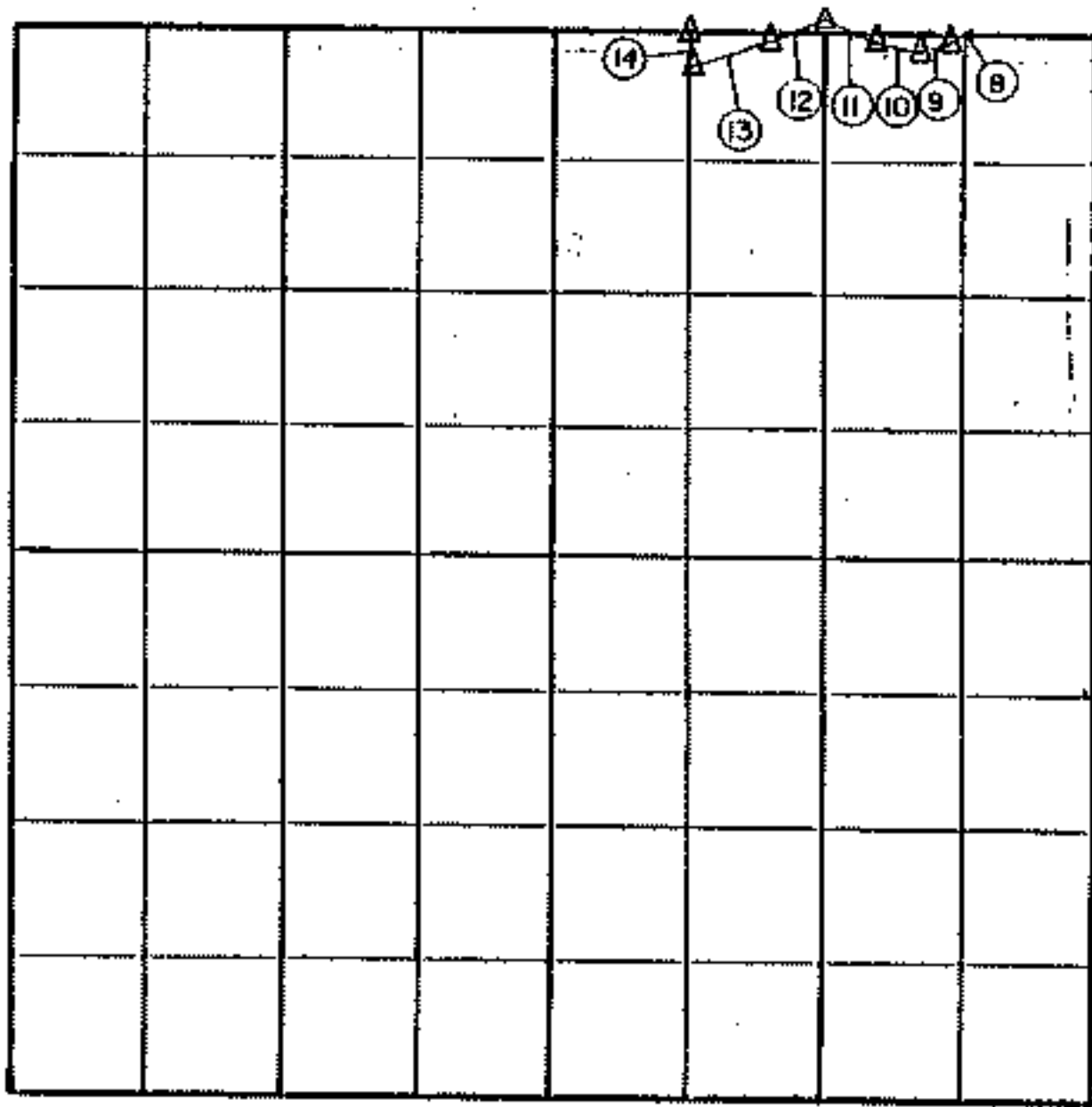
U.S. ARMY ENGINEER DISTRICT, TULSA  
 CORPS OF ENGINEERS

△ MONUMENT  
 □ ORIGINAL CORNER  
 ○ IRON PIN

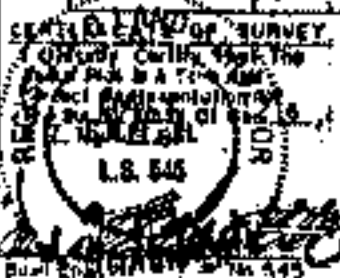
PARTIAL BOUNDARY SURVEYS  
 FT GIBSON LAKE  
 OKLAHOMA

Performed Under Contract Number DACW 56-85-C-0127

SE 4 SEC. 16, T. 17 N., R. 19 E., COUNTY WAGONER



Course No.	Distance	Bearing	Course No.	Distance	Bearing
<i>COLONY SITE No. 27</i>					
8	59.13	S 48° 51' 50" W			
9	73.07	S 70° 30' 30" W			
10	109.08	S 76° 08' 50" W			
11	145.30	N 63° 08' 10" W			
12	133.12	S 64° 25' 30" W			
13	211.51	S 72° 13' 35" W			
14	84.70	N 00° 02' 58" W			



Field Book No. 5-2012 Date 11-7-85

SCOTT & ASSOCIATES, INC.  
 Engineering & Surveying  
 For

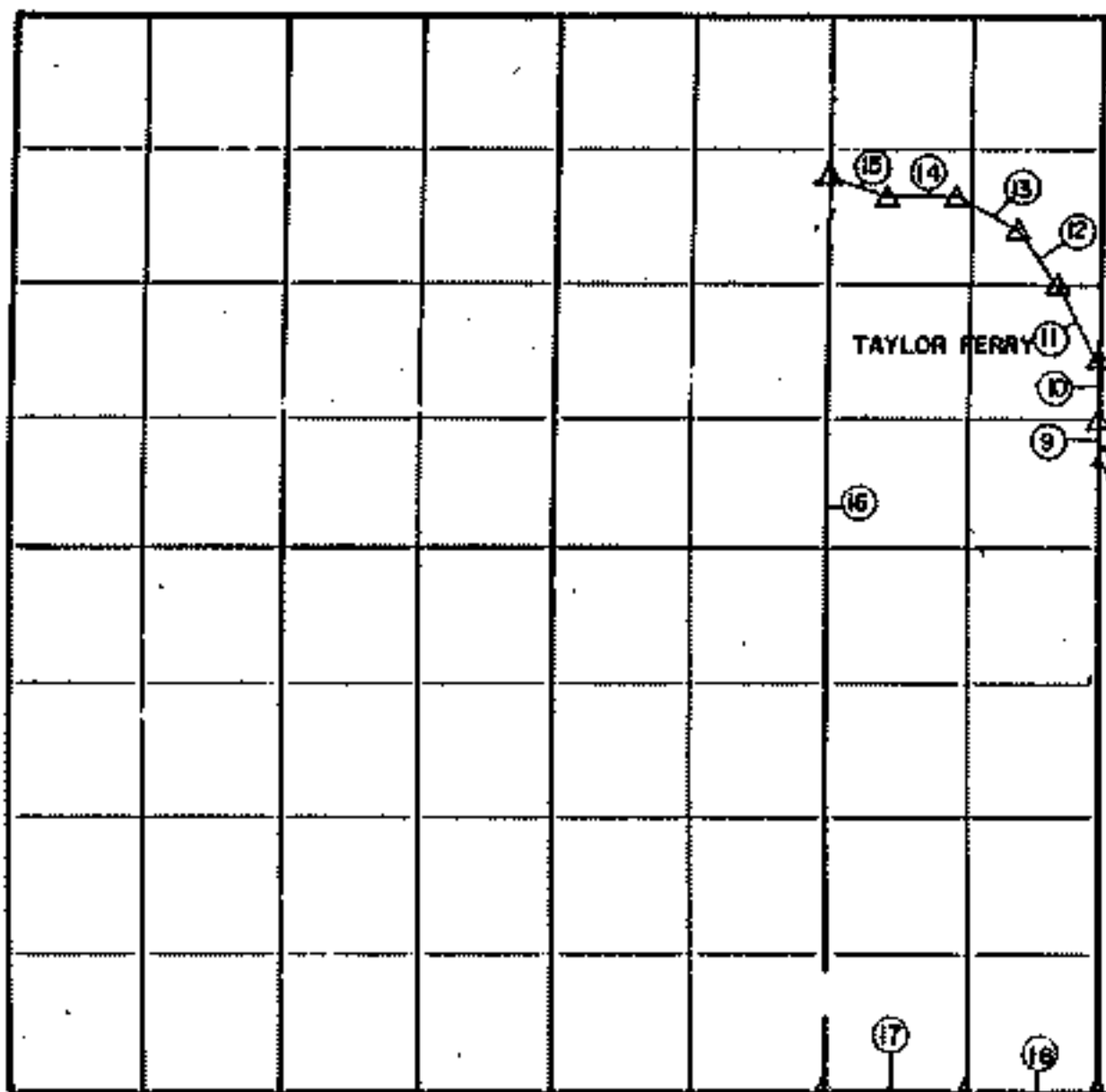
U.S. ARMY ENGINEER DISTRICT, TULSA  
 CORPS OF ENGINEERS  
 SHEET 3 of 3

Δ MONUMENT  
 ○ ORIGINAL CORNER  
 ◊ IRON PIN

PARTIAL BOUNDARY SURVEYS  
 FT GIBSON LAKE  
 OKLAHOMA

Performed Under Contract Number DACW 56-85-C-0127

SE/4 SEC. 16, T. 17N, R. 19E, COUNTY WAGONER



Course No.	Distance	Bearing	Course No.	Distance	Bearing
9	54.63'	N 16° 44' 32" W			
10	197.73'	N 00° 57' W			
11	175.58'	N 27° 13' W			
12	162.40'	N 37° 26' W			
13	175.10'	N 62° 52' W			
14	181.50'	N 89° 10' W			
15	150.65'	N 71° 13' W			
16	2243.88'	S 00° 11' E			
17	330.12'	WEST			
18	330.12'	WEST			



Field Book No. 5-2012 Date 11-19-80

SCOTT & ASSOCIATES, INC.  
 Engineering & Surveying  
 For

U.S. ARMY ENGINEER DISTRICT, TULSA  
 CORPS OF ENGINEERS

Δ MONUMENT  
 9 ORIGINAL CORNER  
 O IRON PIN

MYLAR 5