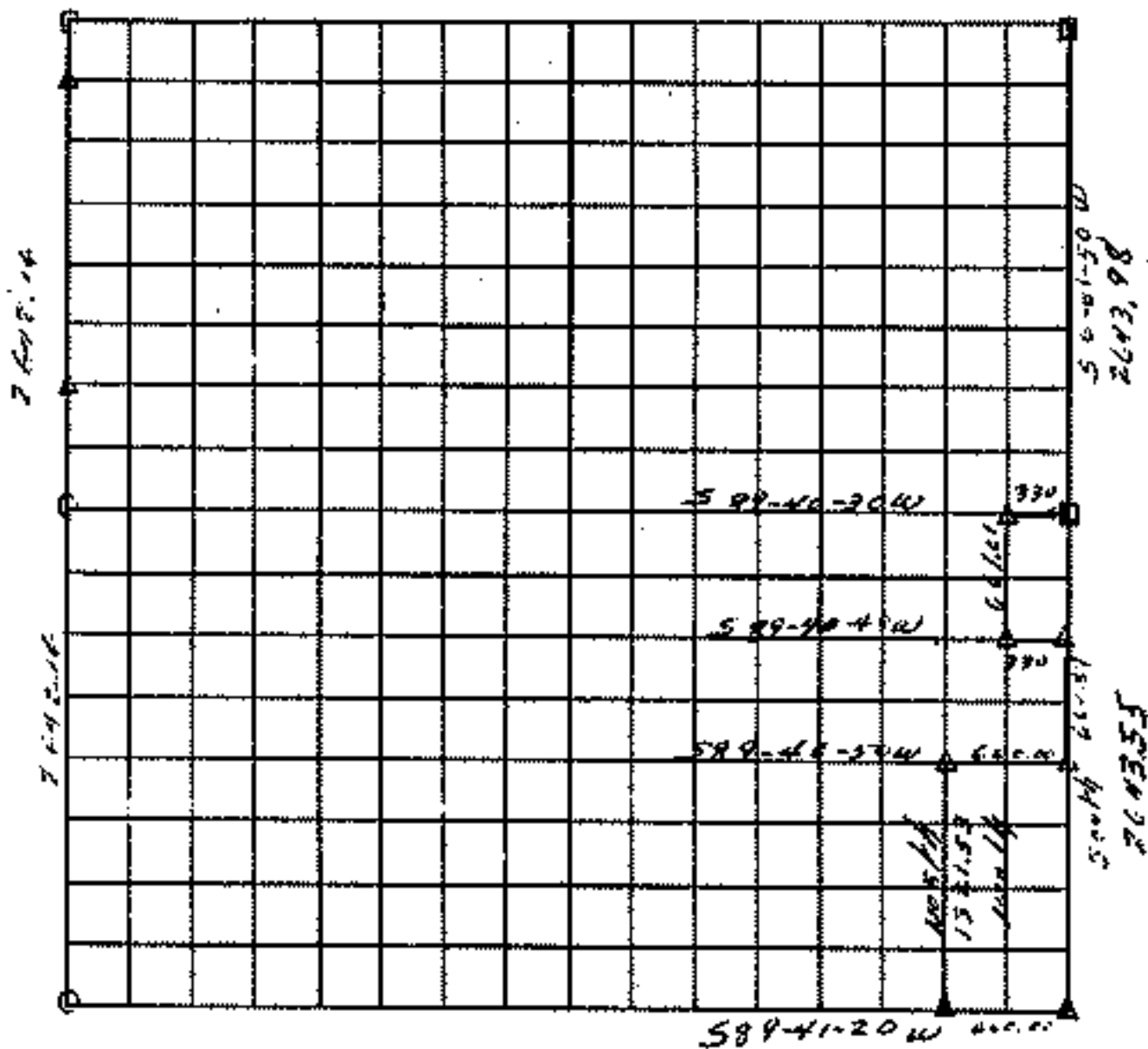


RECORD BOUNDARY PLAT

SEC 22 T 17N R 12E

COUNTY WAGNER



Course No.	Distance	Bearing	Course No.	Distance	Bearing

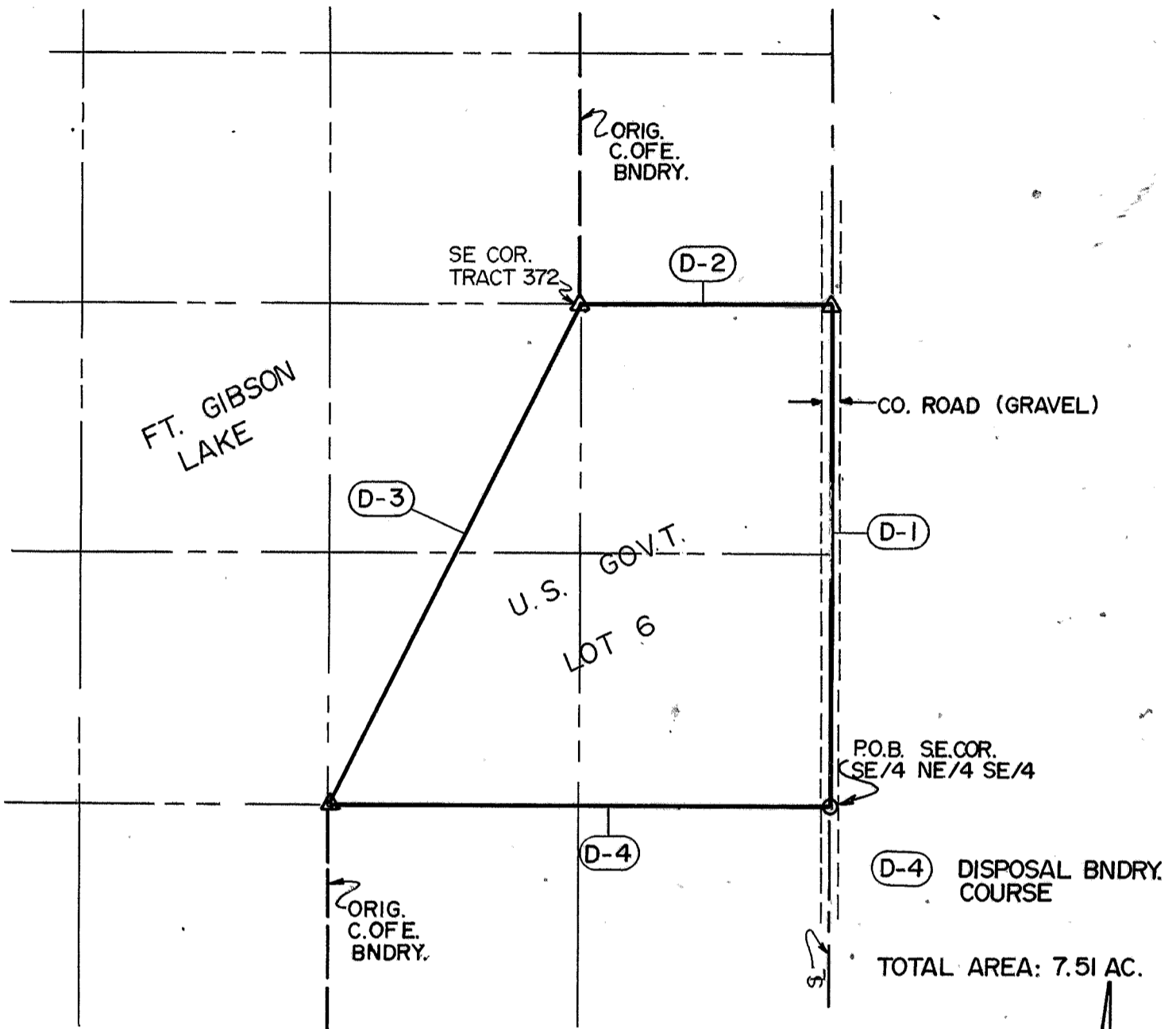
Field Book No. 5-1228 Date JUNE 1951

- LEGEND**
- MONUMENT
 - ORIGINAL CORNER
 - IRON PIN

DISPOSAL TRACT SURVEY PLAT
 FT. GIBSON DAM & RESERVOIR
 LAKE FT. GIBSON, OKLA.

SEC. 22 , T 17 N , R 19 E , COUNTY WAGONER

PARCEL NO. 15 Performed Under Contract No. DACA56-88-D-0050



(D-4) DISPOSAL BNDRY. COURSE

TOTAL AREA: 7.51 AC.

SCALE 1"=200'

Course No.	Distance	Bearing	Course No.	Distance	Bearing
D-1	660.81	N 00°00'35" E			
D-2	330.10	S 89°41'13" W			
D-3	740.48	S 26°28'14" W			
D-4	660.05	N 89°39'59" E			

Field Book No. 5-1278 Date DEC., 1988

CERTIFICATE OF SURVEY ENTZ ENGINEERING & ASSOCIATES INC. AND
 I Hereby Certify That The HUFFMAN SURVEYING CO., INC.
 Above Plat is a True and Correct A Joint Venture
 Representation of the Survey for
 Made in Sec 22 T 17 N, R 19 E. U.S. ARMY ENGINEER DISTRICT, TULSA
 CORPS OF ENGINEERS

— LEGEND —
 Δ MONUMENT
 □ ORIGINAL CORNER
 ○ IRON PIN W/ CAP

Ron Huffman
 Ron Huffman L.S. 1020