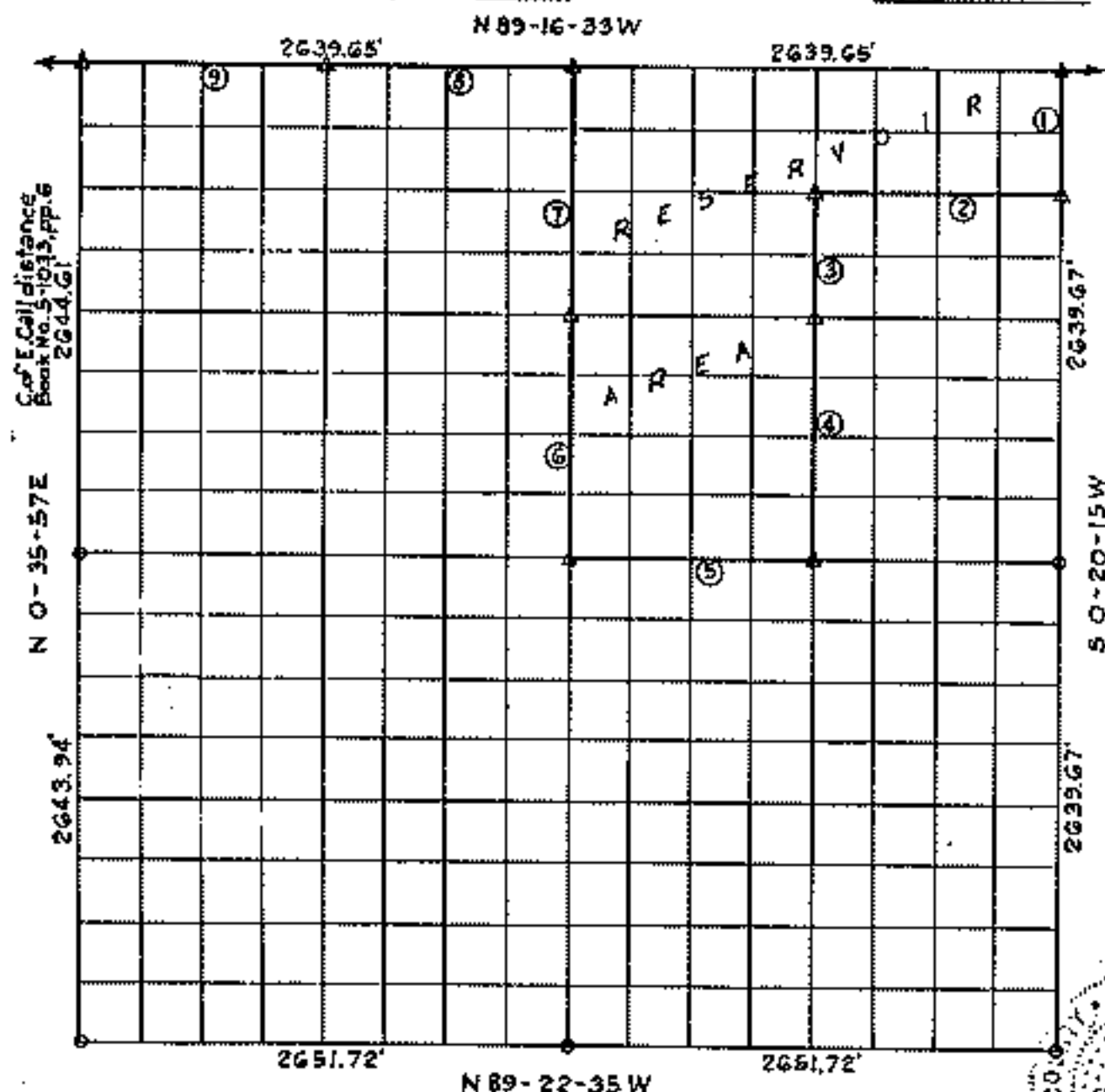


PARTIAL BOUNDARY SURVEYS
FORT GIBSON LAKE, AREA "A"
OKLAHOMA

Performed under Contract Number DACW56-77-C-0058
 SEC. 26, T. 17N., R. 19E., COUNTY CHEROKEE



Course No.	Distance	Bearing	Course No.	Distance	Bearing
1	659.92'	S 0-20-15W			
2	1320.57'	N 89-17-22W			
3	660.23'	S 0-24-10W			
4	1321.63'	S 0-24-10W			
5	1322.00'	N 89-19-47W			
6	1321.07'	N 0-28-06E			
7	1321.08'	N 0-28-06E			
8	1319.83'	N 89-16-33W			
9	1319.82'	N 89-16-33W			

STATE OF OKLAHOMA } SS
 CHEROKEE COUNTY }
 FILED FOR RECORD IN MY OFFICE ON

JUL 7 - 1977

At 11:20 o'clock
 in Book 281 of Page 203-211
 ROMADELL MANKAM County Clerk
 T. H. H. Deputy

Certificate of Survey

I hereby certify that the above plat is a true and correct representation of the survey made in Section 26, T. 17N., R. 19E., Cherokee County, Oklahoma.

Charles J. Finklea
 Charles J. Finklea
 Registered Land Surveyor No. 25

Scale: - 1:10,000
 Date: - May 1977
 Field Book No. 5-1927

Sheet 1 of 2

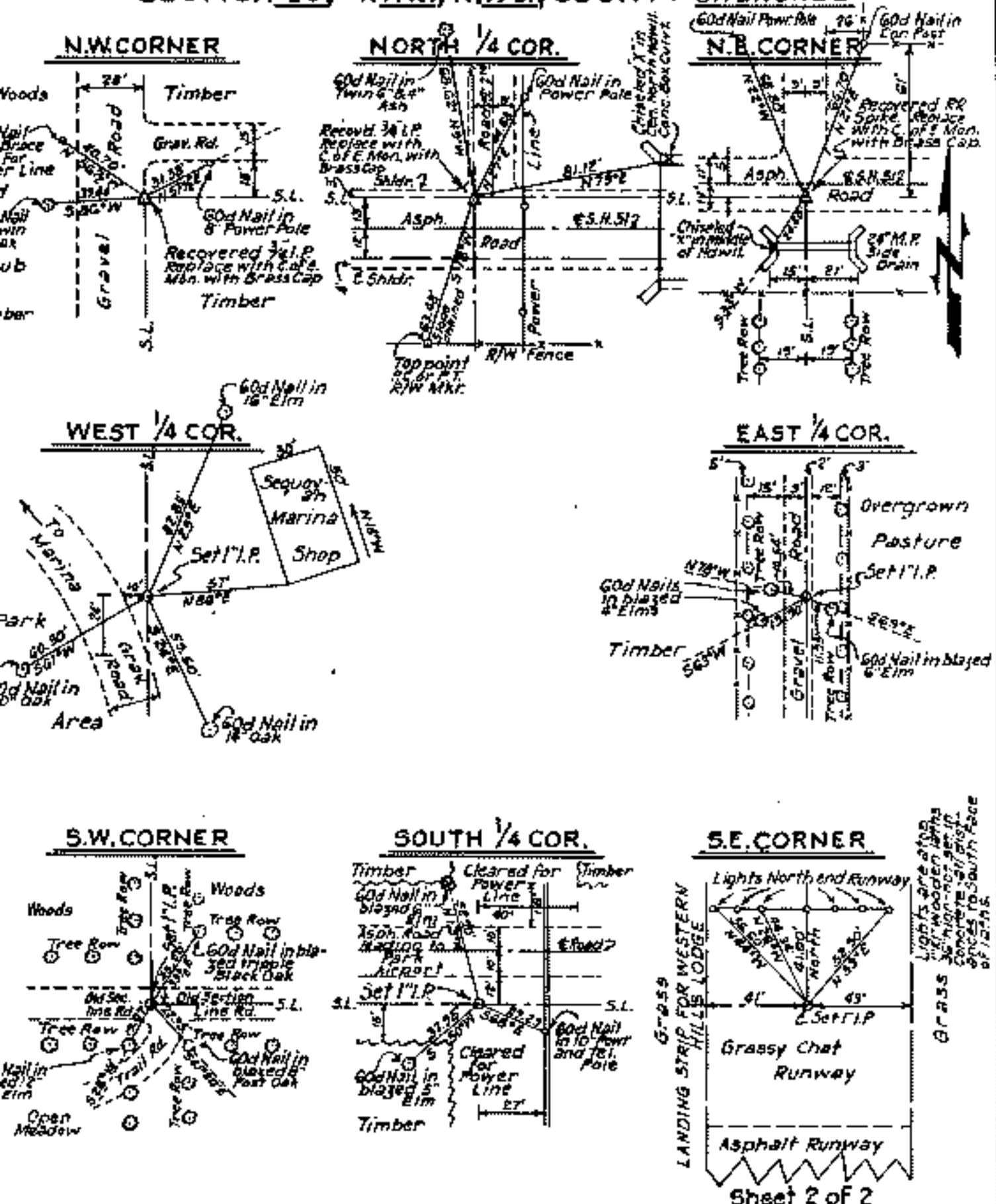
Legend

- △ Monument
- Orig. Corner
- Iron Pin
- ▲ Mon. by O.H.D.

FURTHER SOUTH LAKE, AREA A
OKLAHOMA

SECTION AND QUARTER SECTION CORNER
REFERENCES FOR

SECTION 26, T. 17N., R. 19E., COUNTY CHEROKEE



Certificate of Survey

I hereby certify that the above plat is a true and correct representation of the survey made in Sec. 26, T. 17 N., R. 19 E., Cherokee County, Oklahoma.

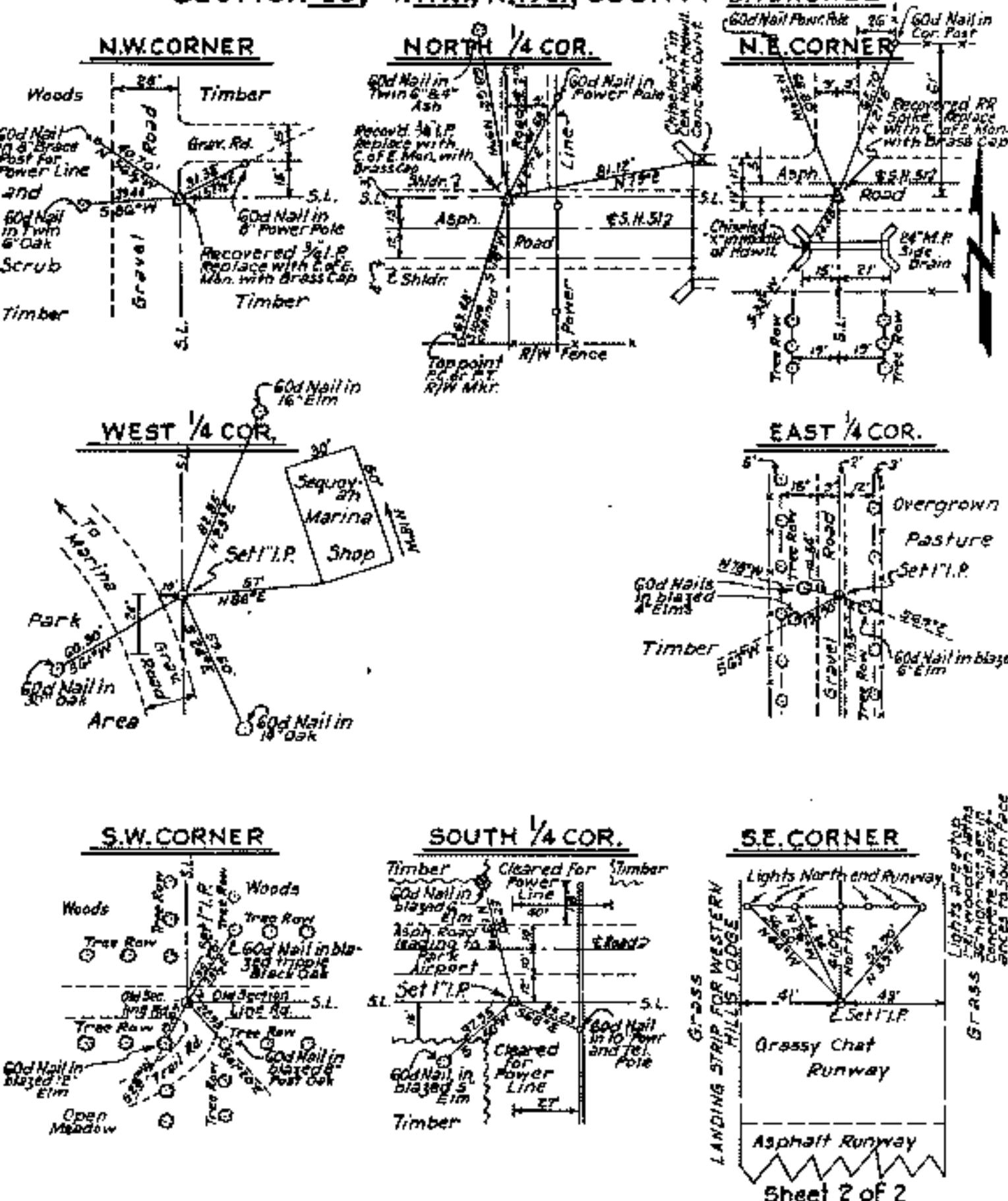
Charles J. Pinklea
Charles J. Pinklea
Registered Land Surveyor No. 35

Scale: - 1" = 50'
Date: - May 1977
Field Book No. 5-1927

Legend

- ▲ Monument
- Orig. Corner
- Iron Pin
- ▲ Mon. by O.H.D.

**PORT GIBSON LAKE, AREA A
OKLAHOMA
SECTION AND QUARTER SECTION CORNER
REFERENCES FOR
SECTION 26, T.17N., R.19E., COUNTY CHEROKEE**



Certificate of Survey

I hereby certify that the above plat is a true and correct representation of the survey made in Sec. 26, T. 17 N., R. 19 E., Cherokee County, Oklahoma.

Charles J. Finklea
Charles J. Finklea
 Registered Land Surveyor - No. 35

Scale: - 1" = 50'
 Date: - May 1977
 Field Book No. 5-1927

Legend

- △ Monument
- Orig. Corner
- Iron Pin
- ▲ Mon. by O.H.D.