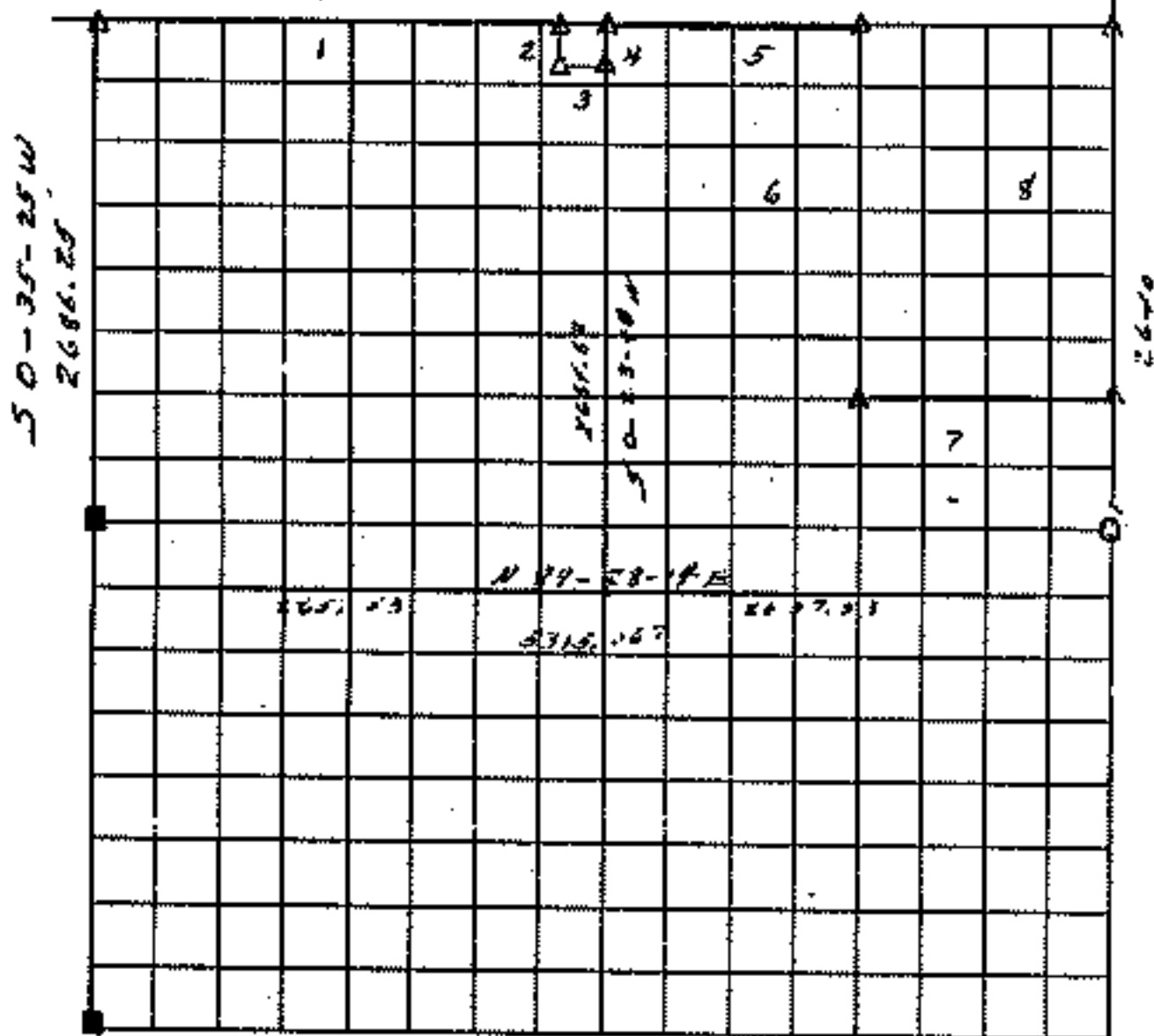


RECORD BOUNDARY PLAT

SEC 4 T 17N R 19E COUNTY WAGNER

5296.35 EAST



Course No.	Distance	Bearing	Course No.	Distance	Bearing
1	2439.47	EAST			
2	208.71	50-23-00 W			
3	208.71	EAST			
4	208.71	N 0-23-00 E			
5	1324.07	EAST			
6	1988.62	50-18-50 E			
7	1327.74	50-23-10 E			
8	1940.00	N 0-15-00 E			

Field Book No. 5-12-83 Date

BEARINGS AND ASSUMED
COURSES NOT STAMPED
AS SHOWN.

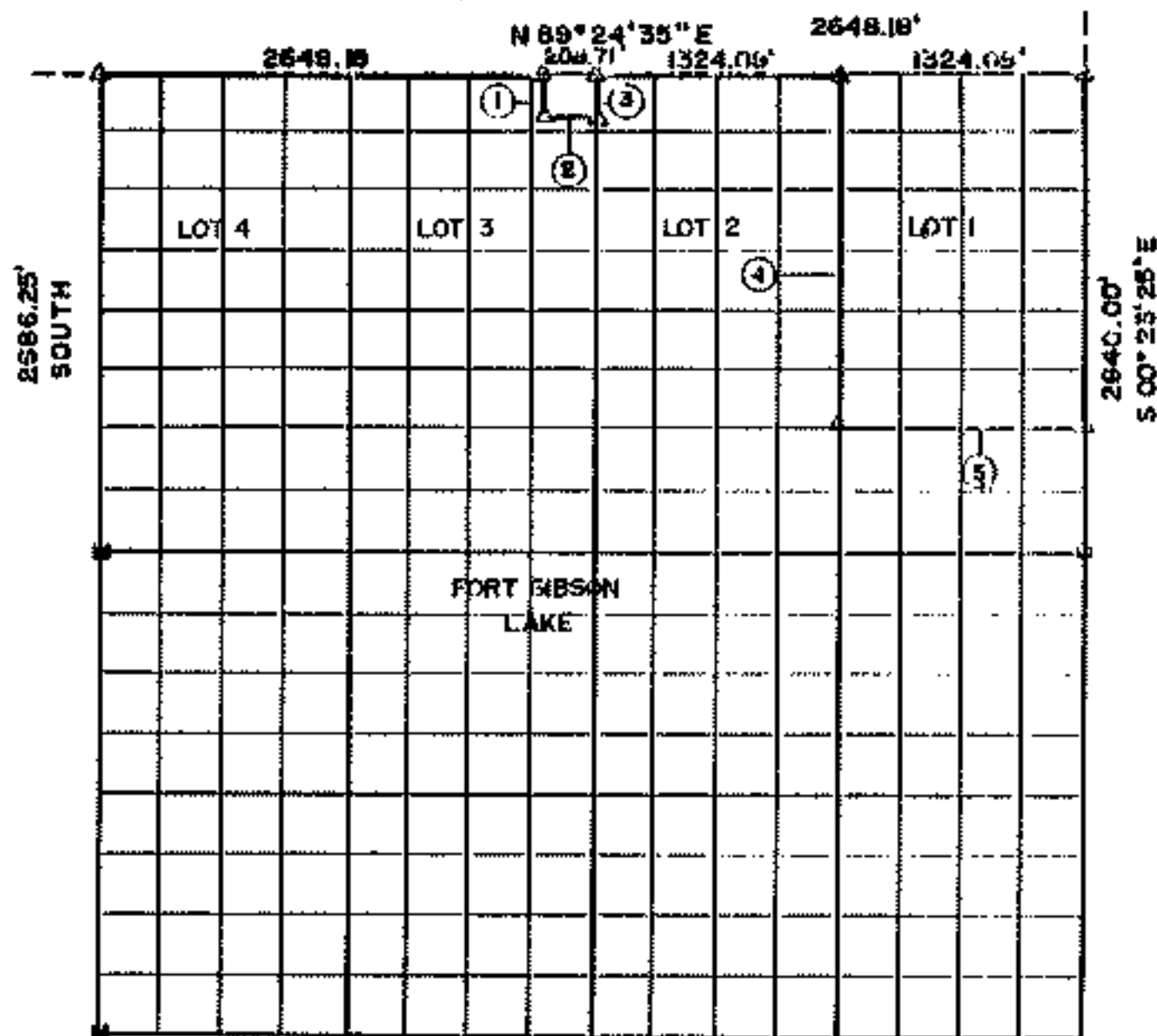
LEGEND

- ▲ MONUMENT
- ORIGINAL CORNER
- IRON PIN

RECORD BOUNDARY PLAT

LAKE FORT GIBSON, OKLAHOMA

SEC 4 T 17N R 19E COUNTY WAGONER



Course No.	Distance	Bearing	Course No.	Distance	Bearing
1	208.71	S 00° 11' 45" W			
2	208.71	N 89° 24' 35" E			
3	208.71	N 00° 11' 45" E			
4	1988.67	S 00° 17' 38" E			
5	1327.74	N 89° 02' 45" E			

NOTE: MONUMENTS IN FIELD ARE DESCRIBED BY SECTIONAL SUBDIVISION NOT COURSES AS DEPICTED BY THIS PLAT. ALL BEARINGS ARE UNIQUE & ASSUMED FOR THIS PLAT.

SEPT., 1964 Field Book No. 5-1175, b-1384 Date FEB., 1951

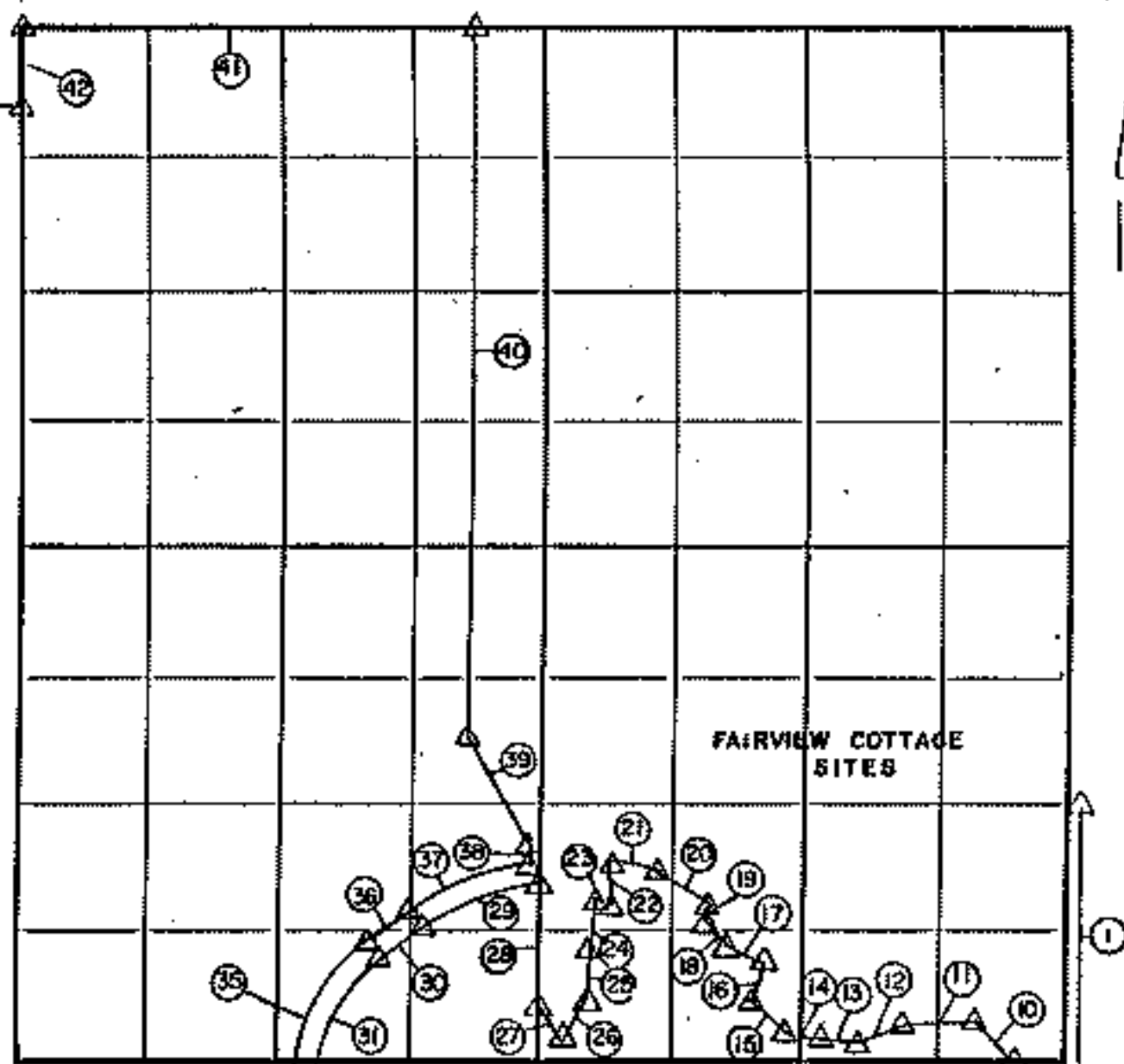
SURVEY PERFORMED BY THE
CORPS OF ENGINEERS, FULSA DISTRICT
PLATS PREPARED BY
ENTZ ENGINEERING & ASSOCIATES INC. AND
HUFFMAN SURVEYING CO., INC.

LEGEND
 ▲ BULLSEYE
 * BULLSEYE CORNER
 ○ IRON PIN

PARTIAL BOUNDARY SURVEYS
 FT. GIBSON LAKE
 OKLAHOMA

Performed Under Contract Number DACW 56-85-C-0127

NE/4 SEC. 4, T. 17N, R. 19E, COUNTY WAGONER



Course No.	Distance	Bearing	Course No.	Distance	Bearing
1	821.09'	S 0° 31' W	22	111.90	S 04° 28' E
10	145.75'	N 40° 49' W	23	55.30	N 63° 25' W
11	179.00'	S 85° 43' W	24	140.50	S 31° 44' W
12	114.07'	S 69° 28' W	25	120.00	S 05° 20' W
13	88.05'	N 85° 41' W	26	112.28	S 24° 07' W
14	65.20'	N 83° 35' W	27	103.70	N 44° 19' W
15	107.65'	N 45° 36' W	28	348.30	N 00° 28' E
16	122.85'	N 25° 10' E	29	352.80	R. 856.47
17	85.10'	N 68° 06' W	30	135.72	S 56° 42' W
18	129.10'	N 35° 52' W	31	506.84	R. 415.74
19	15.90'	N 18° 15' E	32	587.79	R. 465.74
20	129.40'	N 67° 49' W	33	135.72	N 68° 42' E
21	124.33'	R. 847.96	34	341.04	R. 906.47

CERTIFICATE OF SURVEY
 I HEREBY CERTIFY THAT THE ABOVE IS A TRUE AND CORRECT REPRESENTATION OF THE SURVEY MADE BY ME OR UNDER MY CLOSE PERSONAL SUPERVISION AND IN ACCORDANCE WITH THE PROVISIONS OF THE SURVEYING ACT OF 1909.
 REGISTERED PROFESSIONAL SURVEYOR
 SCOTT & ASSOCIATES, INC.
 TULSA, OKLAHOMA

Field Book No. 5-2008 Date 10-9-85

SCOTT & ASSOCIATES, INC.
 Engineering & Surveying
 For

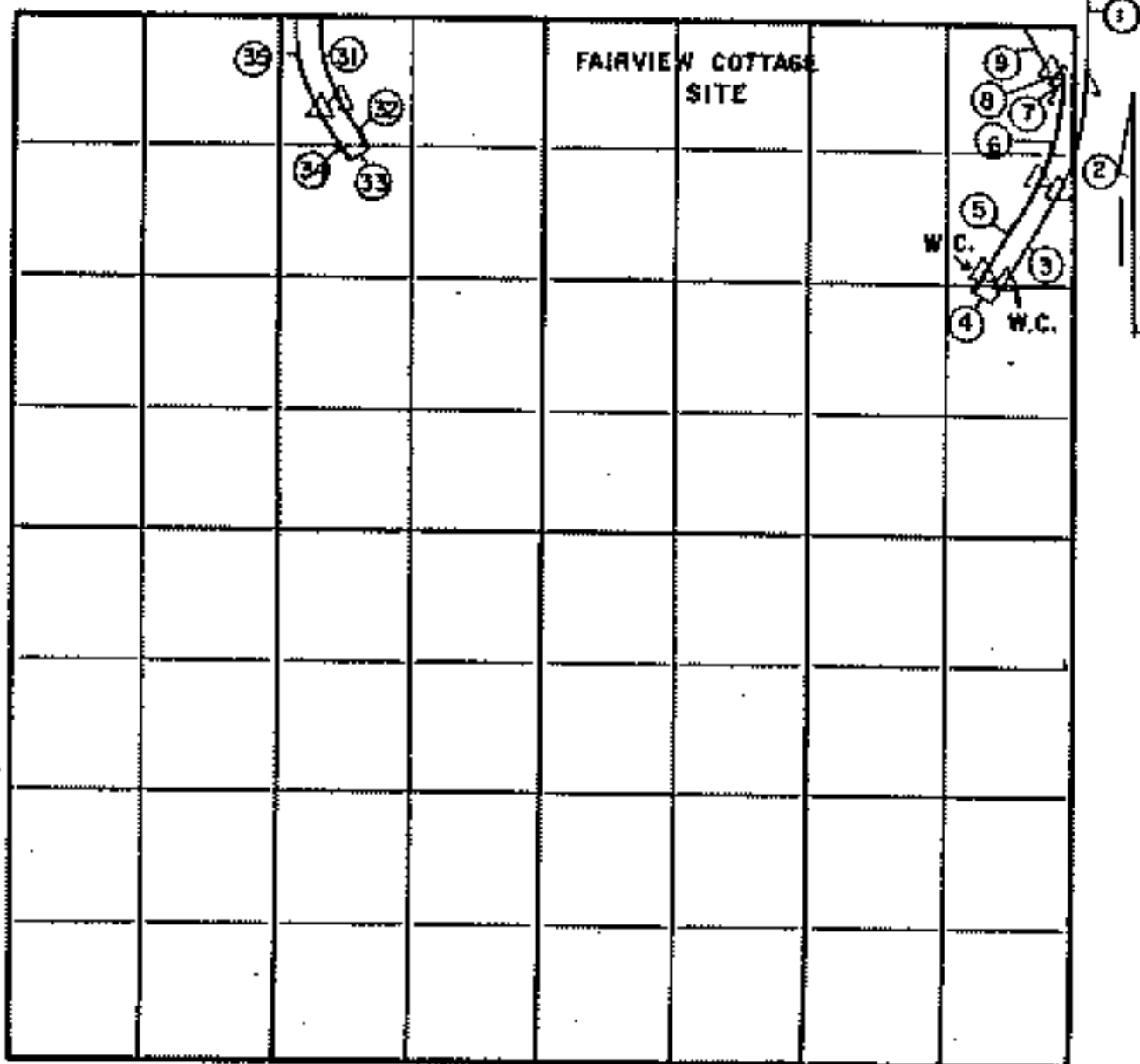
U.S. ARMY ENGINEER DISTRICT, TULSA
 CORPS OF ENGINEERS

Δ MONUMENT
 □ ORIGINAL CORNER
 ○ IRON PIN

**PARTIAL BOUNDARY SURVEYS
FT. GIBSON LAKE
OKLAHOMA**

Performed Under Contract Number DACW 56-85-C-0127

SE/4 SEC. 4, T. 17 N., R. 19 E., COUNTY WAGONER



Course No.	Distance	Bearing	Course No.	Distance	Bearing
2	310.48	R. 597.96	31	506.84	R. 415.74
3	292.98	S 29° 56' W	32	135.95	S 13° 09' E
4	50.00	N 60° 04' W	33	50.00	S 76° 51' W
5	292.98	N 29° 56' E	34	135.95	N 13° 09' W
6	284.52	R. 547.96	35	567.79	R. 465.74
7	37.67	N 00° 31' E			
8	34.30	N 89° 12' W			
9	110.60	N 27° 35' W			



Field Book No. 5-2008 Date 10-9-85

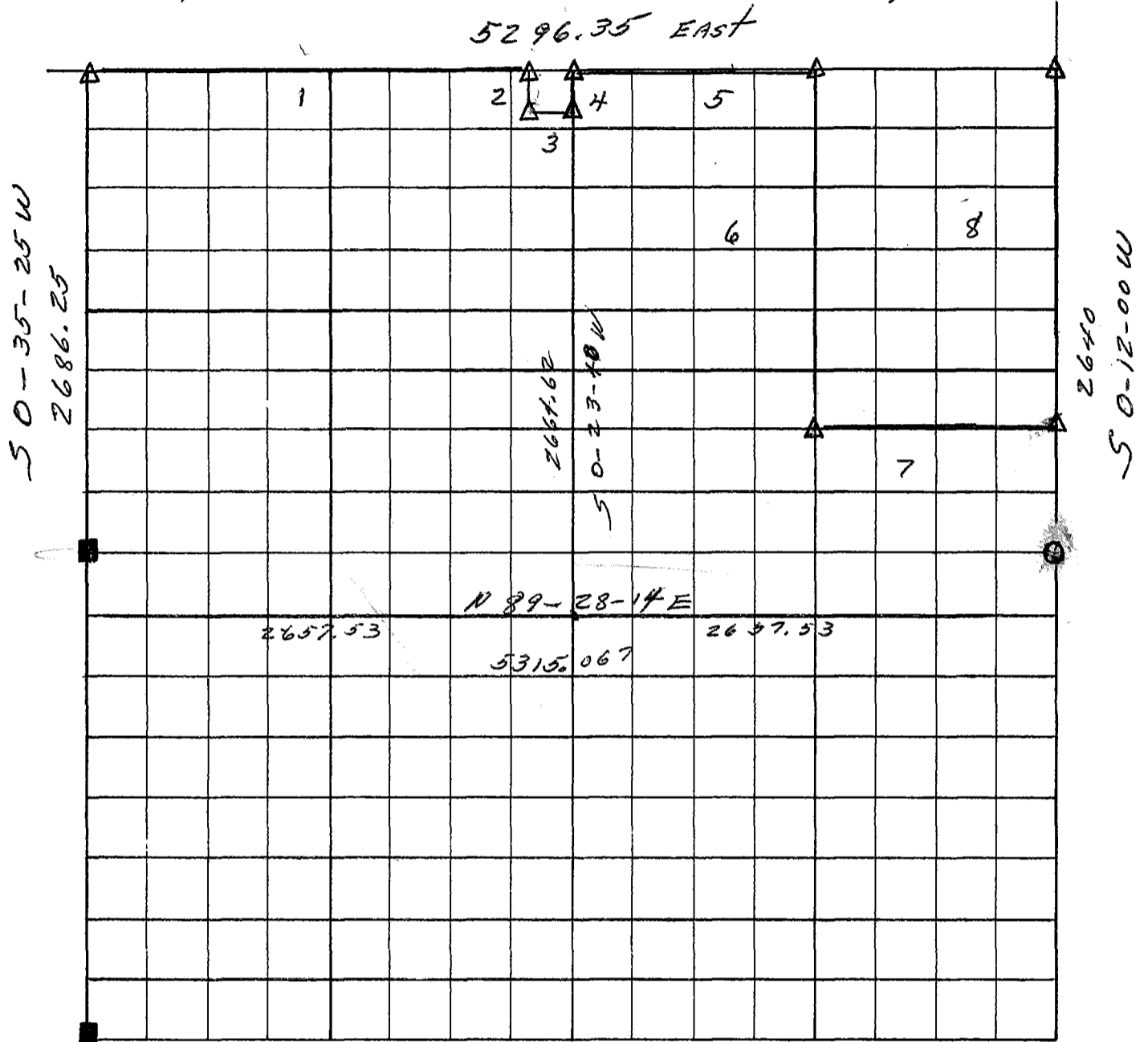
SCOTT & ASSOCIATES, INC.
Engineering & Surveying
For

U.S. ARMY ENGINEER DISTRICT, TULSA
CORPS OF ENGINEERS

Δ MONUMENT
 □ ORIGINAL CORNER
 ○ IRON PIN

RECORD BOUNDARY PLAT

SEC 4 T 17N R 19E COUNTY WAGONER



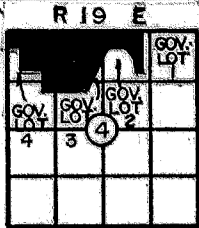
Course No.	Distance	Bearing	Course No.	Distance	Bearing
1	2439.47	EAST			
2	208.71	50-23-40 W			
3	208.71	EAST			
4	208.71	N 0-23-40 E			
5	1324.09	EAST			
6	1988.67	50-19-50 E			
7	1327.74	50-28-10 E			
8	1980.00	50-12-00 E			

Field Book No. 5-1383 Date _____

BEARINGS ARE ASSUMED.
COURSES NOT STAMPED
AS SHOWN.

- LEGEND
- △ MONUMENT
 - ORIGINAL CORNER
 - IRON PIN
 - Rock SET

SHEET ___ of ___



**PARTIAL BOUNDARY SURVEYS
FT. GIBSON LAKE OKLA.
SEC. 4 T-17-N R-19-E**

PARCEL 94

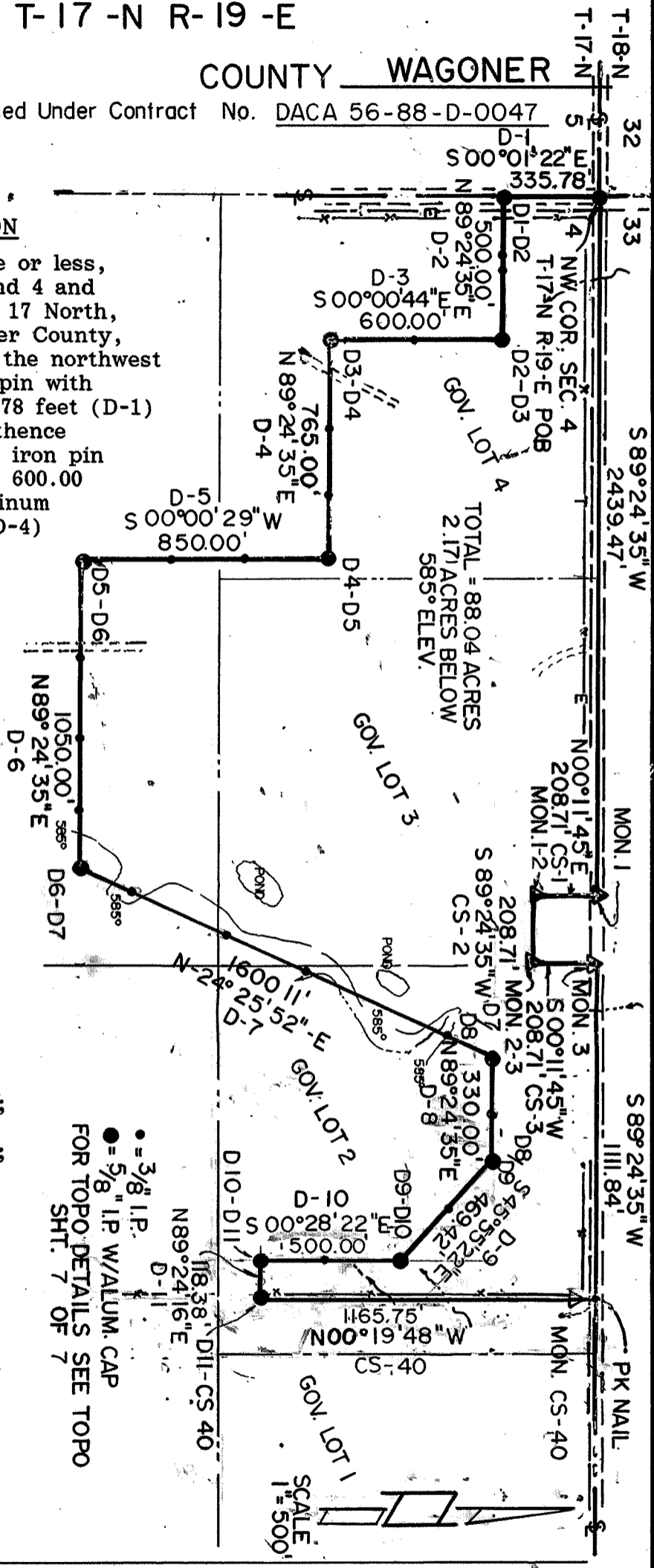
COUNTY WAGONER

D.O. NO. 0002

Performed Under Contract No. DACA 56-88-D-0047

PARCEL #94 DESCRIPTION

Parcel #94 containing 88.04 Acres, more or less, located in U.S. Government Lots 2,3 and 4 and in the South ½ of Section 4, Township 17 North, Range 19 East, Indian Meridian, Wagoner County, Oklahoma, described as: beginning at the northwest corner of Section 4, being a 5/8" iron pin with aluminum cap; thence S00°01'22"E, 335.78 feet (D-1) to a 5/8" iron pin with aluminum cap; thence N89°24'35"E, 500.00 feet (D-2) to a 5/8" iron pin with aluminum cap; thence S00°00'44"E, 600.00 feet (D-3) to a 5/8" iron pin with aluminum cap; thence N89°24'35"E, 765.00 feet (D-4) to a 5/8" iron pin with aluminum cap; thence S00°00'29"W, 850.00 feet (D-5) to a 5/8" iron pin with aluminum cap; thence N89°24'35"E, 1050.00 feet (D-6) to a 5/8" iron pin with aluminum cap; thence N24°25'52"E, 1600.11 feet (D-7) to a 5/8" iron pin with aluminum cap; thence N89°24'35"E, 330.00 feet (D-8) to a 5/8" iron pin with aluminum cap; thence S45°55'22"E, 469.42 feet (D-9) to a 5/8" iron pin with aluminum cap; thence S00°28'22"E, 500.00 feet (D-10) to a 5/8" iron pin with aluminum cap; thence N89°24'16"E, 118.38 feet (D-11) to a 5/8" iron pin with aluminum cap; thence N00°19'48"W, 1165.75 feet (CS-40) to a C of E boundary corner (mon 40-PK nail) on section line in asphalt road; thence S89°24'35"W, 1111.84 feet along the section line to the N ¼ corner of Section 4 (mon 3); thence S00°11'45"W, 208.71 feet (CS-3) to a C of E boundary corner (mon 2/3); thence S89°24'35"W, 208.71 feet (CS-2) to a C of E boundary corner (mon 1/2); thence N00°11'45"E, 208.71 feet (CS-1) to a C of E boundary corner (mon 1) on Section line in asphalt road; thence S89°24'35"W, 2439.47 feet along section line to the point of beginning.



● = 3/8" I.P.
● = 5/8" I.P. W/ALUM. CAP
FOR TOPO DETAILS SEE TOPO SHT. 7 OF 7

BASIS OF BEARINGS AS PER C OF E BNDRY. PLATS & BOOKS!

Field Book No. 5-2032 Date 12-88

CERTIFICATE OF SURVEY

I Herby certify that the Above Plat is a True and Correct Representation of the Survey. U.S. 545

Basil E. Scott
BASIL E. SCOTT, Surveyor U.S. 545

**SCOTT & ASSOCIATES, INC.
LAND SURVEYORS**

**U.S. ARMY CORPS OF ENGINEERS
TULSA DISTRICT**

- LEGEND —
- △ Cof E BRASS CAP
 - ORIGINAL CORNER
 - IRON PIN W/ CAP

REFERENCES

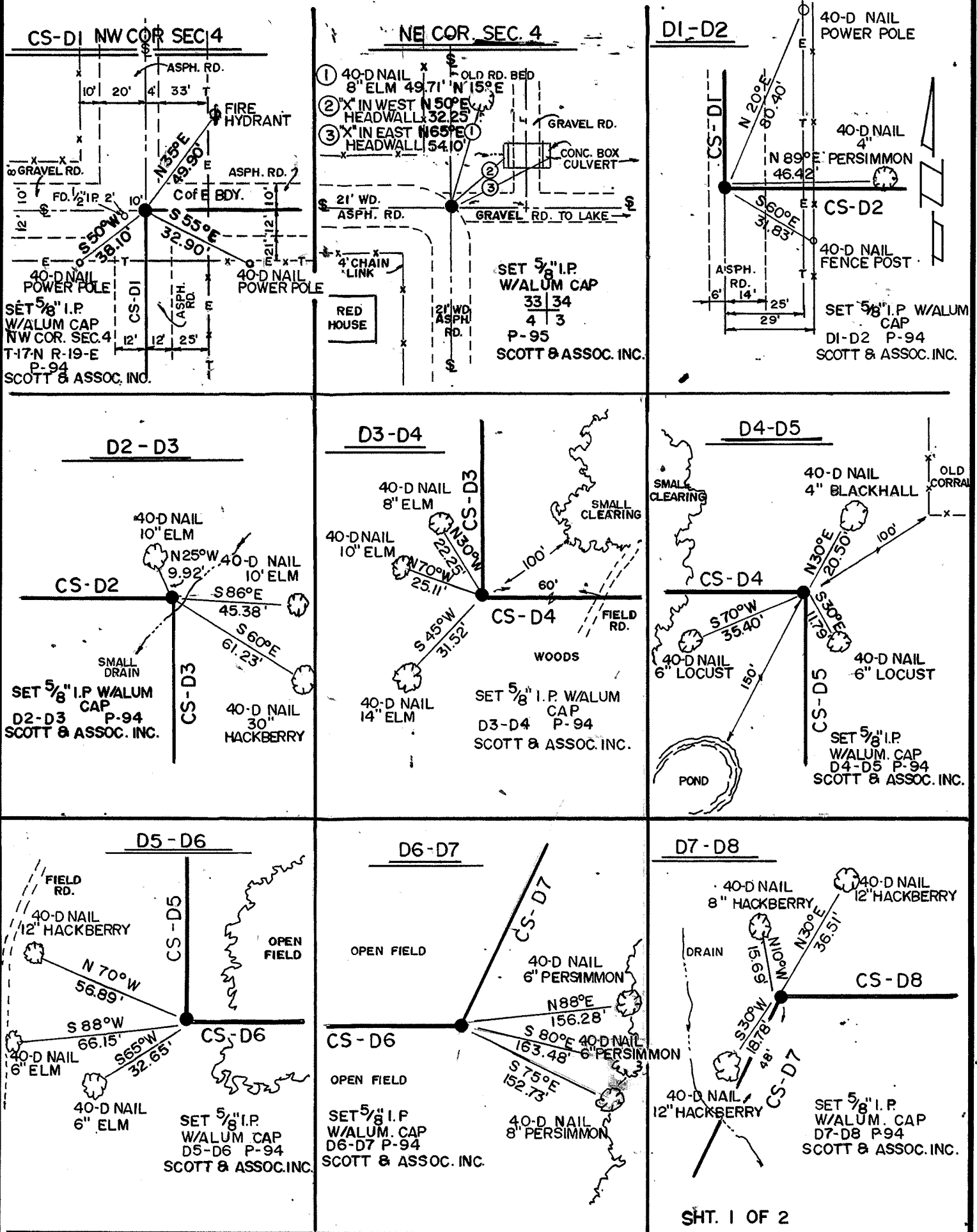
PARTIAL BOUNDARY SURVEYS FT. GIBSON LAKE OKLA.

PARCEL #94 SEC. 4 T-17-N R-19-E

COUNTY WAGONER

D.O. NO. 0002

Performed Under Contract No. DACA 56-88-D-0047



SHT. 1 OF 2

Field Book No. 5-2032 Date 12-88

CERTIFICATE OF SURVEY

I Herby Certify That The Above Plat is a True and Correct Representation of the Survey.

Basil E. Scott Jr.

BASIL E. SCOTT JR. L.S. 545

**SCOTT & ASSOCIATES INC.
LAND SURVEYORS**

U.S. ARMY CORPS OF ENGINEERS
TULSA DISTRICT

— LEGEND —

- △ C of E BRASS CAP
- ORIGINAL CORNER
- IRON PIN W/CAP

REFERENCES

PARTIAL BOUNDARY SURVEYS

FT. GIBSON LAKE OKLA.

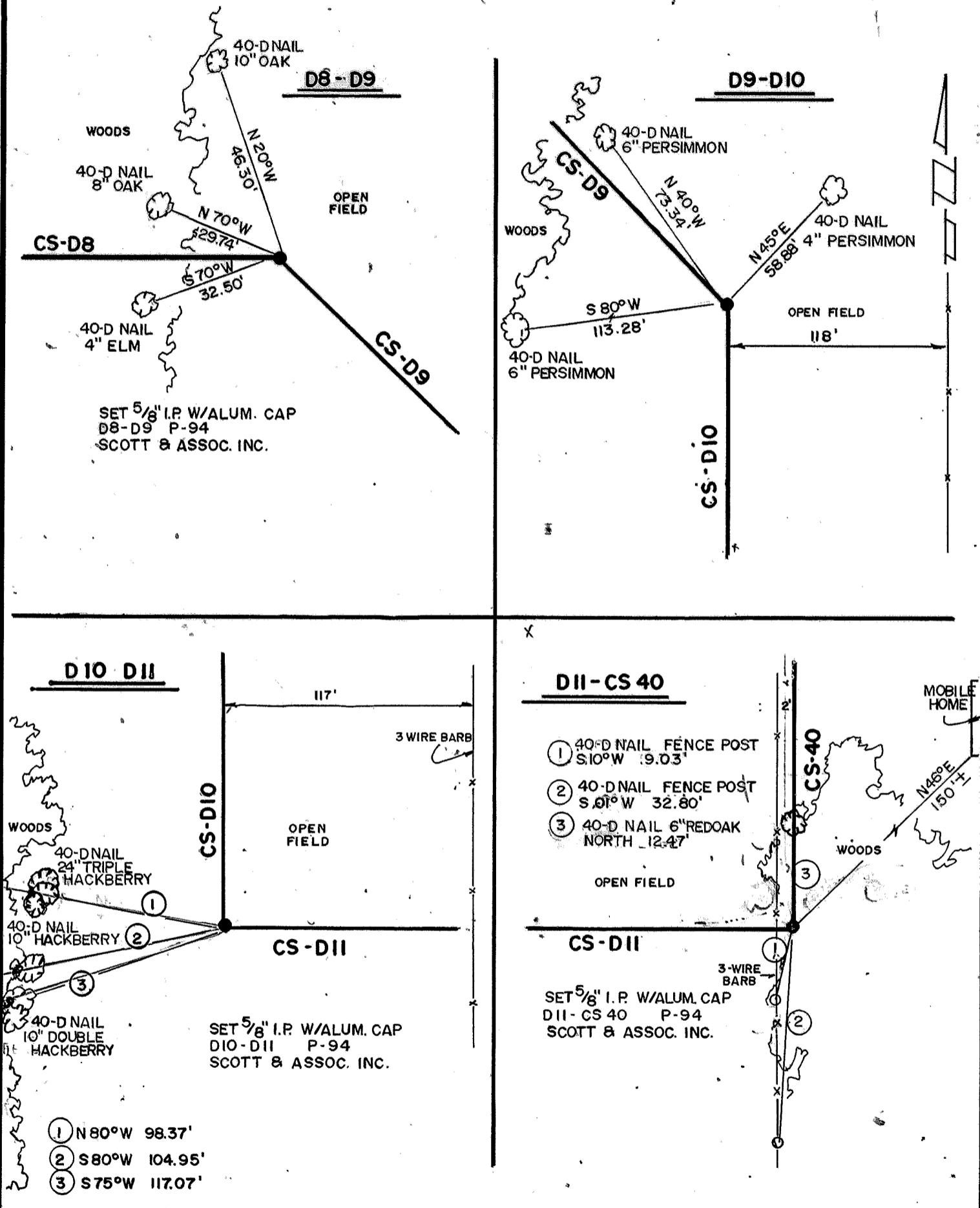
PARCEL # 94

SEC. 4 T-17-N R-19-E

COUNTY WAGONER

D.O. NO. 0002

Performed Under Contract No. DACA 56-88-D-0047



SHT 2 OF 2

Field Book No. 5-2032 Date 12-88

CERTIFICATE OF SURVEY

I Hereby Certify That The Above Plat is a True and Correct Representation of the Survey.

SCOTT & ASSOCIATES INC.
LAND SURVEYORS

— LEGEND —

U.S. ARMY CORPS OF ENGINEERS
TULSA DISTRICT

- △ C of E BRASS CAP
- ORIGINAL CORNER
- IRON PIN W/CAP

BASIL E. SCOTT JR. L.S. 545