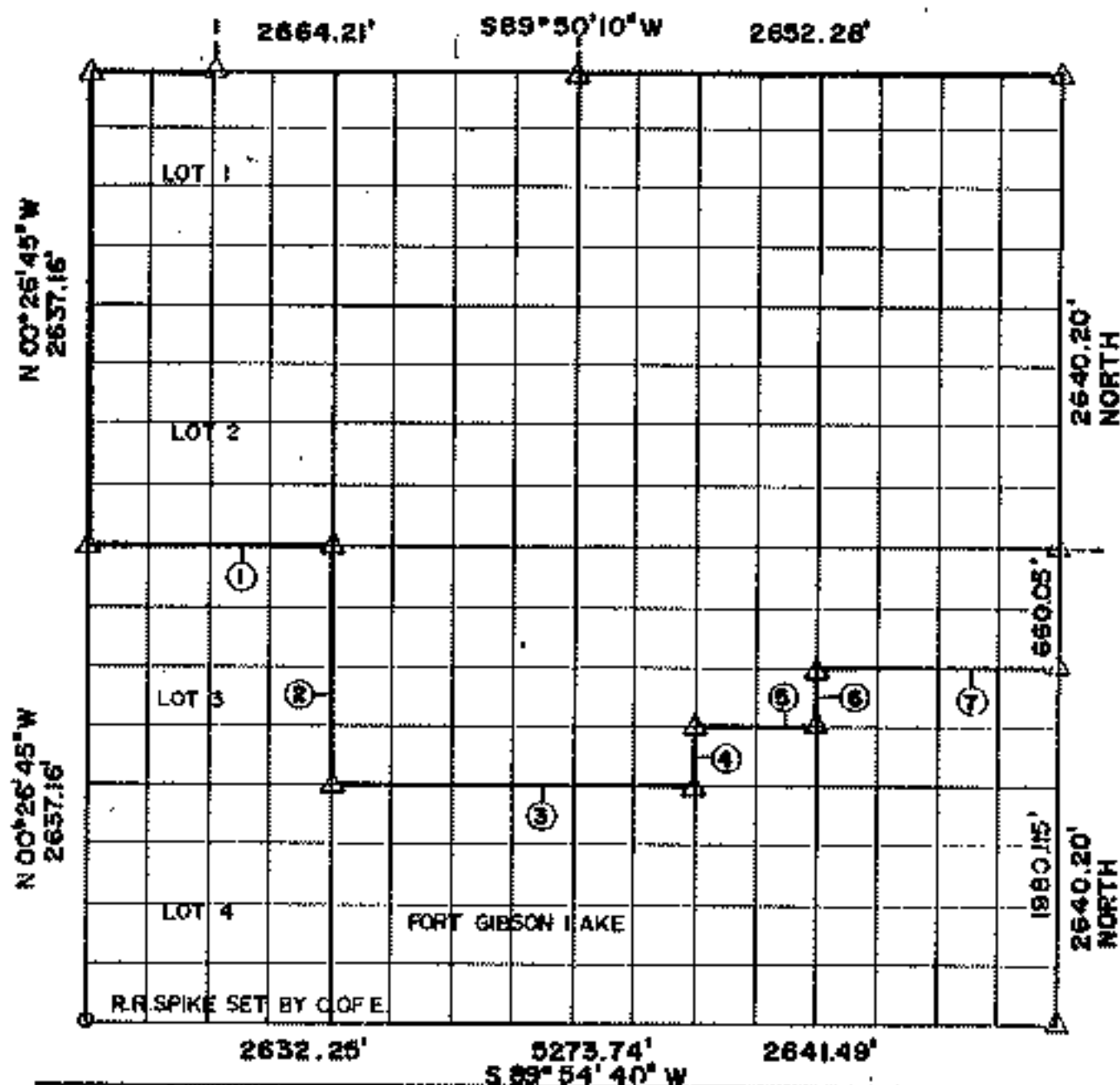


# RECORD BOUNDARY PLAT

LAKE FORT GIBSON, OKLAHOMA

SEC 7 T 17N R 19E COUNTY WAGONER



Course No.	Distance	Bearing	Course No.	Distance	Bearing
1	1324.78	N 89° 52' 25\" E			
2	1518.96	S 00° 09' 26\" E			
3	1983.14	N 89° 53' 33\" E			
4	329.89	N 00° 04' 26\" W			
5	681.22	N 89° 53' 16\" E			
6	329.93	N 00° 02' 57\" W			
7	1322.77	N 89° 53' 00\" E			

NOTE: MONUMENTS IN FIELD ARE DESCRIBED BY SECTIONAL SUBDIVISION NOT COURSES AS DEPICTED BY THIS PLAT. ALL BEARINGS ARE UNIQUE & ASSUMED FOR THIS SECTION.

OCT, 1984

Field Book No. 5-1234

Date AUG, 1950

SURVEY PERFORMED BY THE  
CORPS OF ENGINEERS, TULSA DISTRICT  
PLATS PREPARED BY  
ENTZ ENGINEERING & ASSOCIATES INC. AND  
HUFFMAN SURVEYING CO., INC.

LEGEND

- ▲ MONUMENT
- ORIGINAL CORNER
- IRON PIN

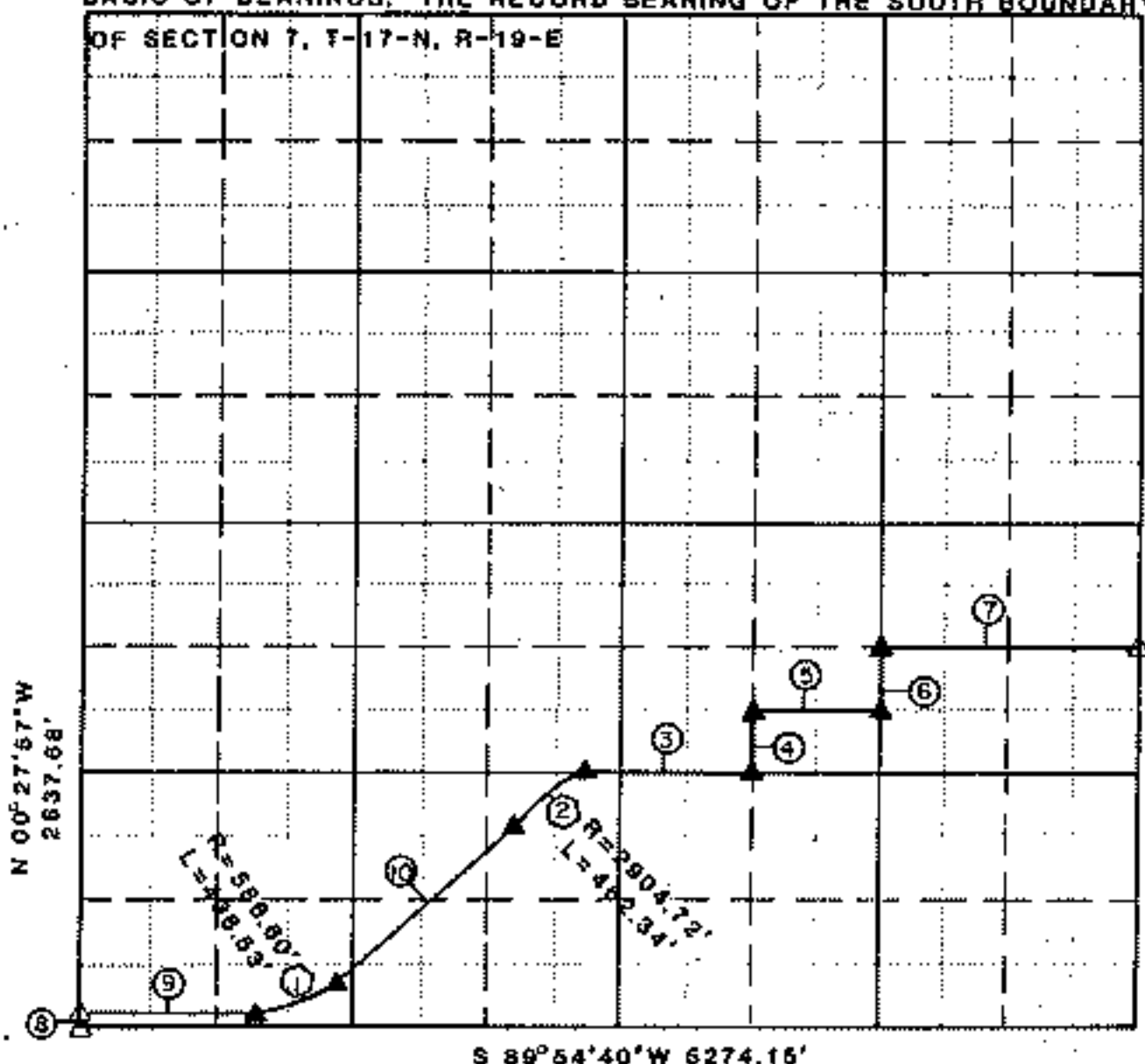
# RECORD BOUNDARY and RETRACEMENT SURVEY PLAT

LAKE FORT GIBSON, OKLAHOMA

PERFORMED UNDER CONTRACT NUMBER DACA56-85-0-0078

SEC. 7, T 17 NORTH, R 19 EAST COUNTY WAGONER

BASIS OF BEARINGS: THE RECORD BEARING OF THE SOUTH BOUNDARY  
OF SECTION 7, T-17-N, R-19-E



S 89°54'40\"W 6274.16'

Course No	Distance	Bearing	Curve No	Chord	Chord Bearing
3	819.17	S 89°53'14\"W	1	428.39	N 68°14'31\"E
4	330.13	N 00°04'24\"W	2	481.86	N 5°21'10\"E
5	661.26	N 89°52'56\"E			
6	329.89	N 00°03'64\"W			
7	1322.81	N 89°52'31\"E			
8	50.00	N 00°27'57\"W			
9	837.82	N 89°40'01\"E			
10	1200.83	N 46°50'01\"E			

Field Book No. 5-2020 Date JANUARY, 1987

CRAFTON, TULL, SPANN & YOE, INC.

under the supervision of  
U.S. ARMY ENGINEER DISTRICT  
TULSA CORPS OF ENGINEERS

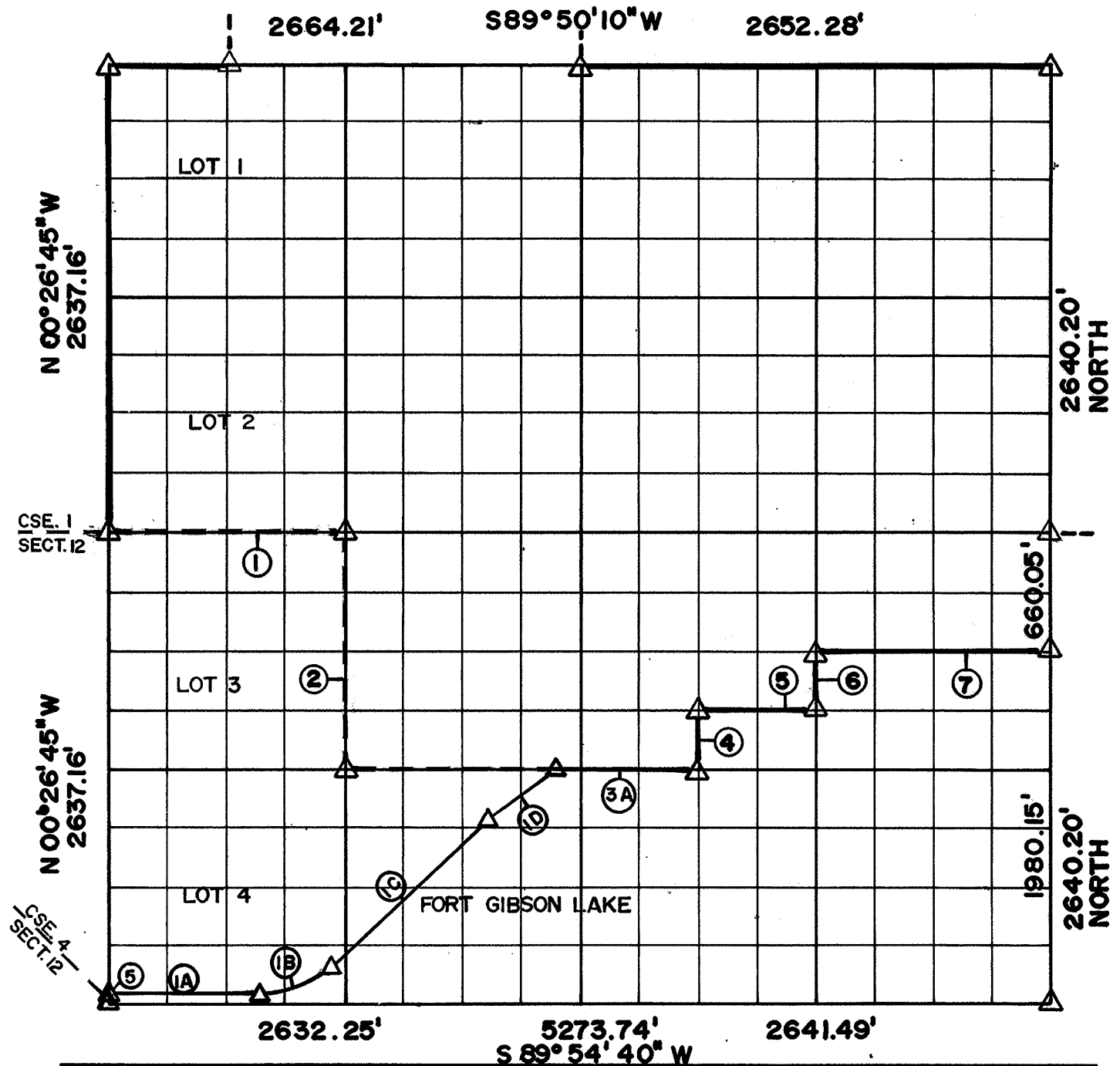
LEGEND

△ SET MONUMENT  
▲ FOURTH MONUMENT

# RECORD BOUNDARY PLAT

LAKE FORT GIBSON, OKLAHOMA

SEC 7 T 17 N R 19 E COUNTY WAGONER



Course No.	Distance	Bearing	Course No.	Distance	Bearing
1	1324.78	N 89° 52' 25" E			
2	1318.96	S 00° 09' 26" E			
3	1983.14	N 89° 53' 33" E			
4	329.89	N 00° 04' 26" W			
5	661.22	N 89° 53' 16" E			
6	329.93	N 00° 02' 57" W			
7	1322.77	N 89° 53' 00" E			
IA	837.60	N 89° 39' 30" E			
IB	438.54	R=586.62 Δ=42-49-59 LEFT			
IC	1200.81	N 46° 49' 34" E			
ID	462.44	R=2914.79 Δ=9-05-25			
3A	818.90	N 89° 53' 33" E			

NOTE: MONUMENTS IN FIELD ARE DESCRIBED BY SECTIONAL SUBDIVISION NOT COURSES AS DEPICTED BY THIS PLAT. ALL BEARINGS ARE UNIQUE & ASSUMED FOR THIS SECTION.

N. R/W OF ROAD

OCT., 1984 Field Book No. 5-12 34 Date AUG., 1950

SURVEY PERFORMED BY THE  
CORPS OF ENGINEERS, TULSA DISTRICT  
PLATS PREPARED BY  
ENTZ ENGINEERING & ASSOCIATES INC. AND  
HUFFMAN SURVEYING CO., INC.

LEGEND  
 Δ MONUMENT  
 □ ORIGINAL CORNER  
 ○ IRON PIN

SHEET      of