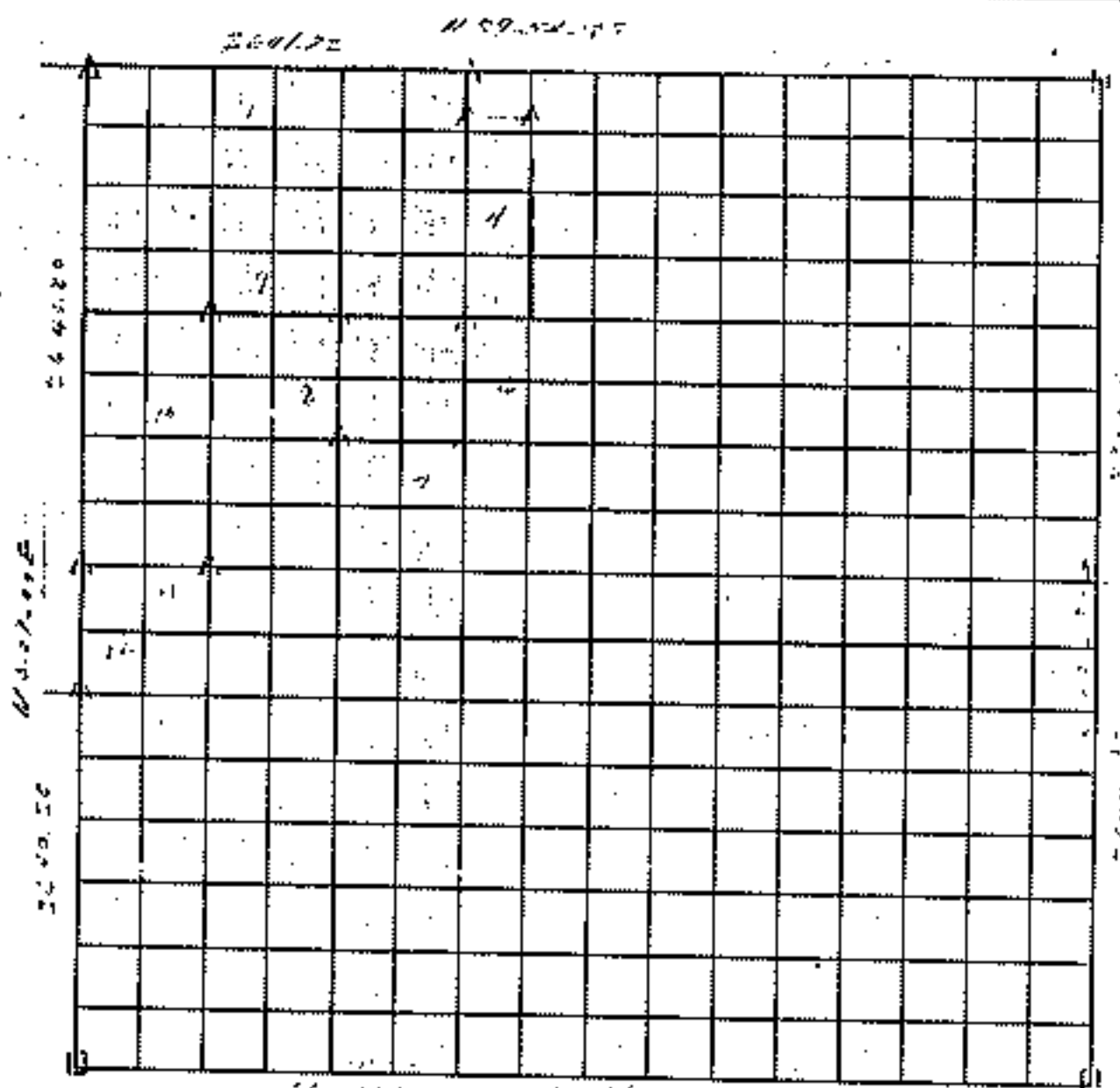


# RECORD BOUNDARY PLAT

SEC 2 T 17 R 17 COUNTY Missouri



Course No.	Distance	Bearing	Course No.	Distance	Bearing
1	1906.57	N 89.54.17			
2	76.70	S 0.26.41			
3	532.54	N 89.54.17			
4	1026.70	S 0.26.41			
5	532.54	N 89.54.17			
6	76.70	S 0.26.41			
7	1906.57	N 89.54.17			
8	1906.57	N 89.54.17			
9	1906.57	N 89.54.17			
10	1906.57	N 89.54.17			
11	1906.57	N 89.54.17			
12	1906.57	N 89.54.17			

Field Book No. \_\_\_\_\_ Date \_\_\_\_\_

*Handwritten notes:*  
 0.15 11.11  
 Basing on...

**LEGEND**  
 A MONUMENT  
 B ORIGINAL CORNER  
 C IRON PIN

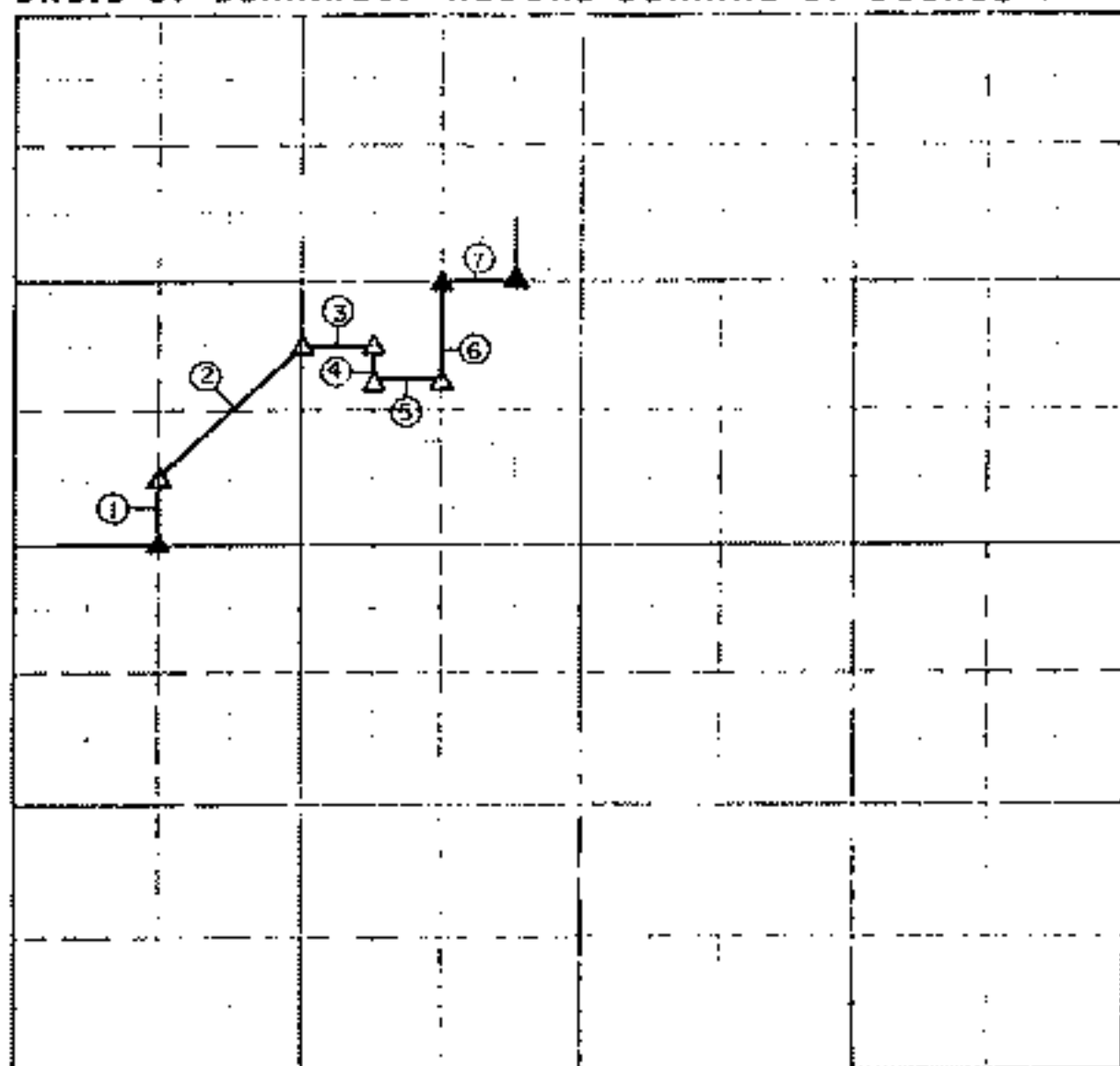
# PARTIAL BOUNDARY SURVEY PLAT

LAKE FORT GIBSON, OKLAHOMA

PERFORMED UNDER CONTRACT NUMBER DACA56-85-D-0078

SEC. 8, T17 NORTH, R 19 EAST COUNTY WAGONER

BASIS OF BEARINGS: RECORD BEARING OF COURSE 7



Course No	Distance	Bearing	Course No	Distance	Bearing
1	330.27	N 00° 08' 05" E			
2	930.24	N 45° 02' 54" E			
3	330.38	N 89° 56' 10" E			
4	165.14	S 00° 07' 18" W			
5	330.40	N 89° 56' 31" E			
6	495.51	N 00° 06' 58" E			
7	330.07	N 89° 55' 30" E			

Field Book No 5-2020 Date SEPTEMBER, 1986

CRAFTON, TULL, SPANN & YOE, INC.

under the supervision of

U.S. ARMY ENGINEER DISTRICT

LEGEND:

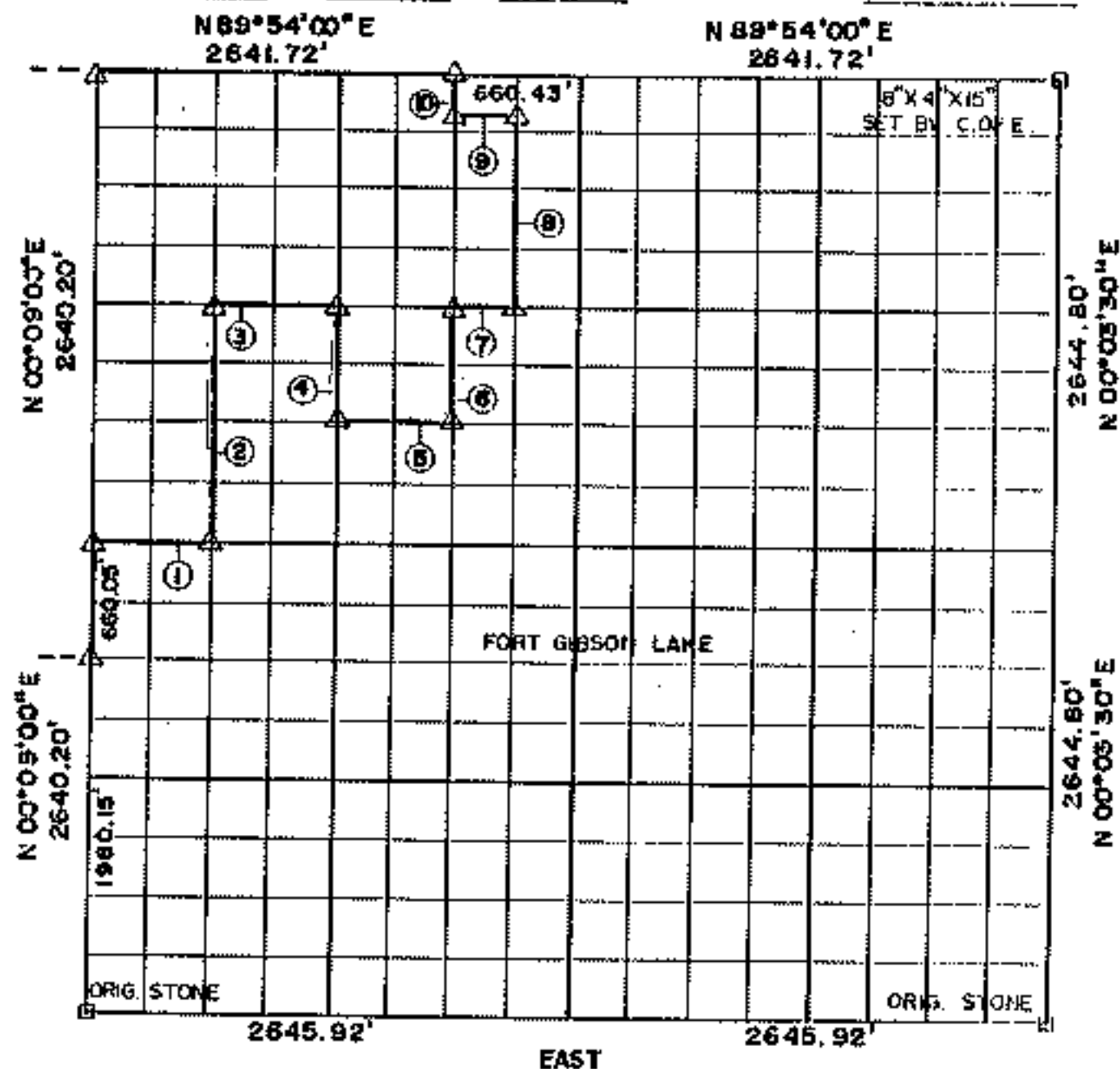
○ SET MONUMENT  
△ FOUND MONUMENT

# RECORD BOUNDARY PLAT

LAKE FORT GIBSON, OKLAHOMA

SEC 8 T 17N R 19E

COUNTY WAGONER



Course No.	Distance	Bearing	Course No.	Distance	Bearing
1	660.96	N 89° 57' 00" E			
2	1320.39	N 00° 08' 19" E			
3	660.70	N 89° 55' 30" E			
4	660.34	S 00° 07' 36" W			
5	660.83	N 89° 56' 15" E			
6	660.49	N 00° 06' 36" E			
7	330.35	N 89° 55' 30" E			
8	1086.90	N 00° 06' 35" E			
9	330.24	S 89° 54' 18" W			
10	264.20	N 00° 06' 56" E			

NOTE: MONUMENTS IN FIELD ARE DESCRIBED BY SECTIONAL SUBDIVISION, NOT COURSES AS DEPICTED BY THIS PLAT. ALL BEARINGS ARE UNIQUE & ASSUMED FOR THIS PLAT.

SEPT., 1984 Field Book No. 5-12205-1175 Date FEB., 1950

SURVEY PERFORMED BY THE  
 CORPS OF ENGINEERS, TULSA DISTRICT  
 PLATS PREPARED BY  
 ENTZ ENGINEERING & ASSOCIATES INC. AND  
 HUFFMAN SURVEYING CO., INC.

SHEET of

