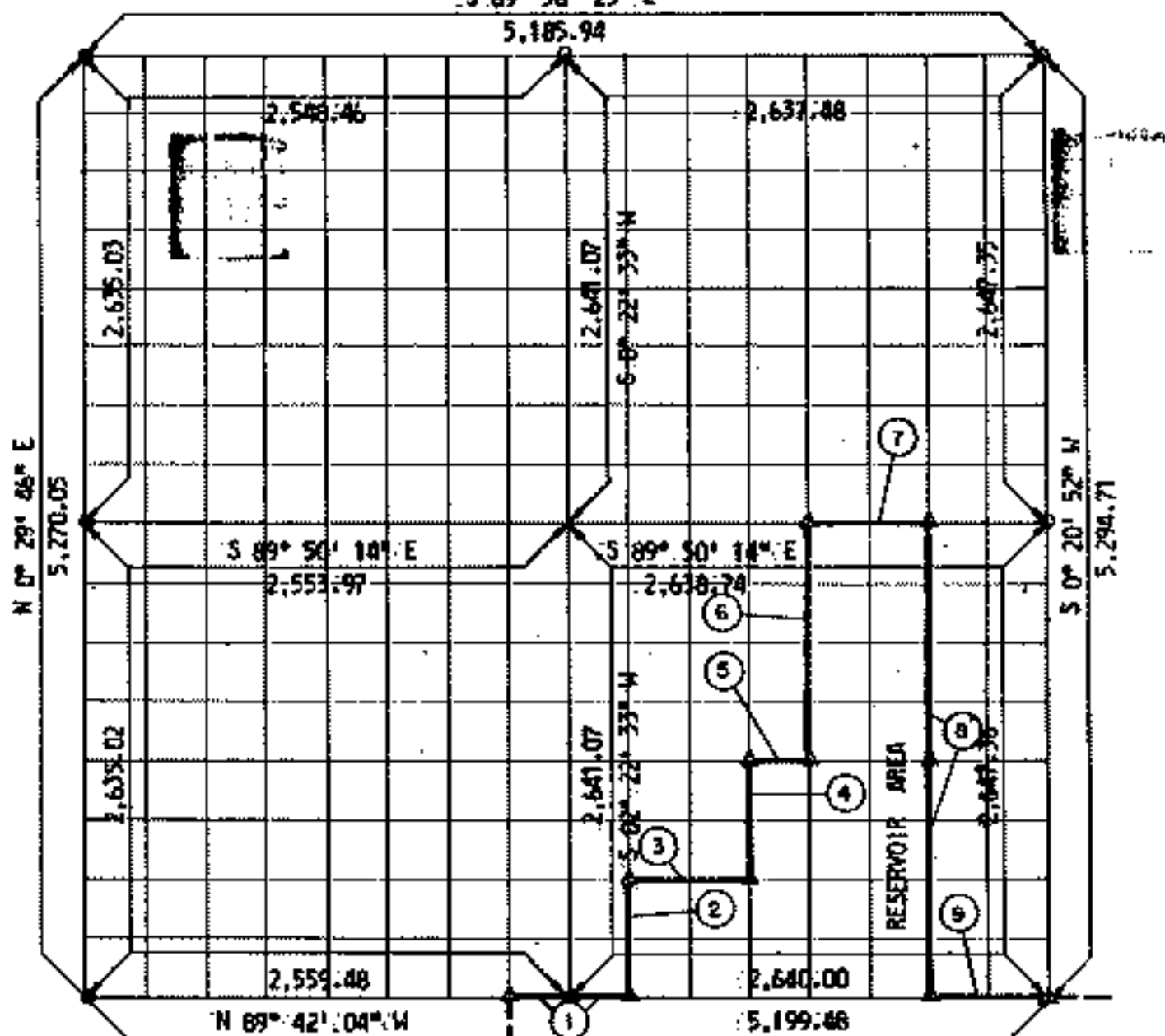


**PARTIAL BOUNDARY SURVEYS
FORT GIBSON LAKE
AREA "D"**

Performed Under Contract Number DACW 56-71-C-010

SEC. 18 T 17 N, R 20 E COUNTY, CHEROKEE
S 89° 58' 25" E



Course No.	Distance	Bearing	Course No.	Distance	Bearing
1	660.00	N 89° 42' 04" W			
2	660.86	N 0° 22' 20" E			
3	659.92	S 89° 44' 07" E			
4	660.86	N 0° 21' 55" E			
5	322.92	S 89° 46' 08" E			
6	11,322.11	N 0° 21' 42" E			
7	659.68	S 89° 50' 18" E			
8	2,645.78	S 0° 21' 17" W			
9	660.00	S 89° 42' 04" E			

CERTIFICATE OF SURVEY
I HEREBY CERTIFY THAT THE
THIS PLAN IS A TRUE AND
ACCURATE REPRESENTATION OF
THE SURVEY MADE IN SECTION
18, T. 17 N., R. 20 E., CHEROKEE
COUNTY, OKLAHOMA.

Field Book No. 15-1823 Date: MAY, 1971

**MANSUR-STEELE-WILLIAMS, INC.
CONSULTING ENGINEERS**

Under the Supervision of
**U.S. ARMY ENGINEER DISTRICT, TULSA
CORPS OF ENGINEERS**

LEGEND
 Δ MONUMENT
 □ ORIGINAL CORNER
 ○ IRON PIN

Robert W. Mansur
REGISTERED PROFESSIONAL ENGINEER